









High Voltage Control

HT status: On HT: 200.00 kV
Emission status: On Dark Current: 95 µA
Beam Valve: Open Close Emission Current: 168 µA
REG Stand By Mode: Normal Stand By
Status: Time to finish ** min.
Anode Wobler: On Off
Quick Emission Selector (QES): QES1 QES2 QES3

Controller for EM-2000FLNR

File: Dialogs Monitor Property Option Maintenance Display: EELS Help

HT SPC Filter Photo Status VAC E1: Screen E2: B-Stopper E3: Anode E4: GUNA E5: IL-Stop E6: Degauss

Acc 200.00 kV TEM Spot 1 MAG: X600K IMAGING
Emission Beam Valve 168 µA Alpha 1 Defocus: 169.50 nm Energy Shift 0.0 eV

X= -83.3 µm Z= 30.9 µm
Y= 256.6 µm TX= -0.1 deg
SFx= -15% SFy= 32% SF Refresh Stage Neutral

Alignment Panel for Marden...

DEF Select
Gun Spot CLA
IS1 IS2
PL DET

Stigmator
CL STIG OL STIG IL STIG
Compensator
Shft TR Angle NTRL

Wobler
Gun Anode
HT OBJ
ImageX ImageY
Shift Shift
T90 T90

Save to Alignment File... Load Alignment File...
FreeAp...

Filter Tuning

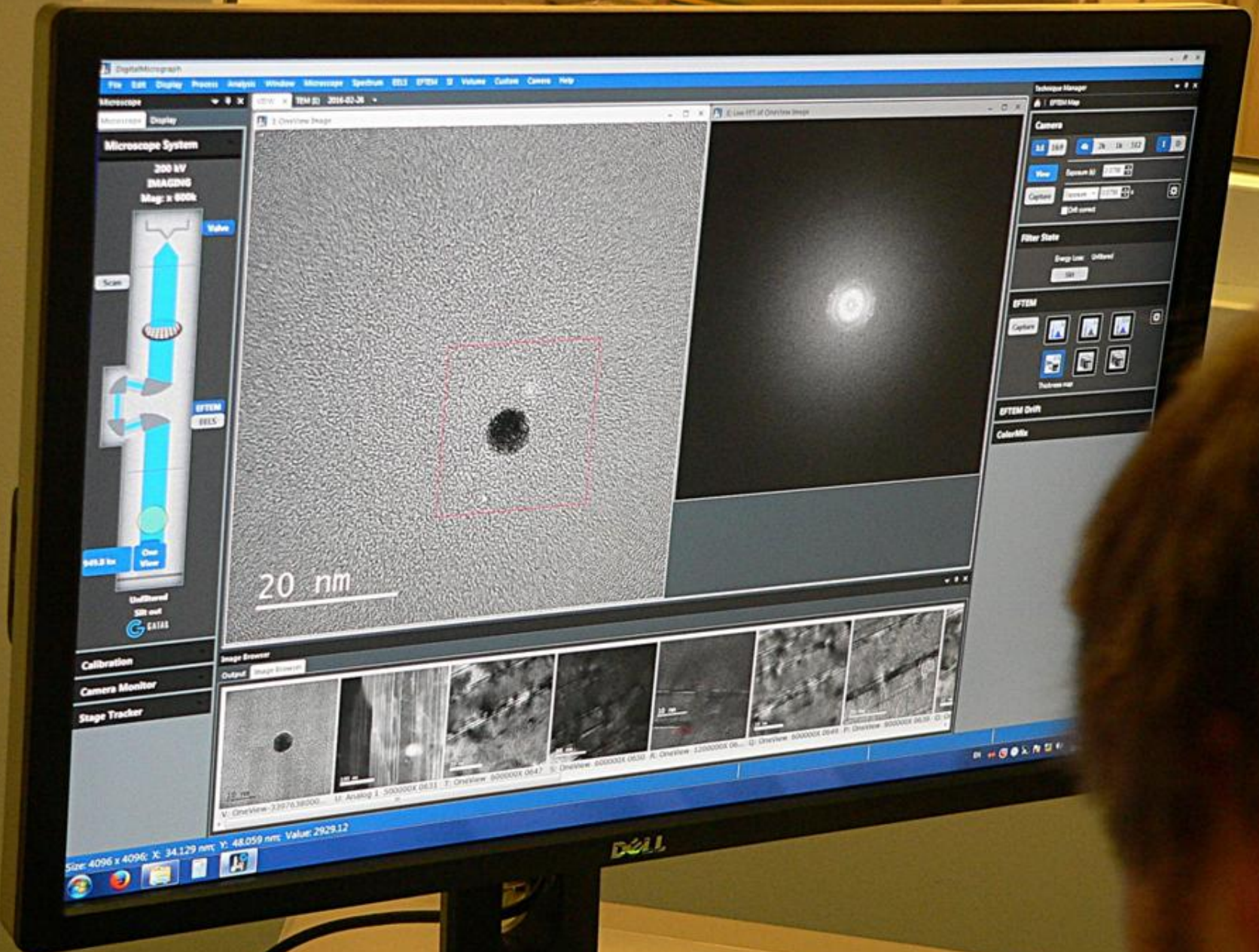
Energy Shift: 0.0 eV
Value List: 0
STEP: 10
STEP: 10.0 eV
Position: Close
Imaging Mode: Imaging Spectroscopy
Synchronizability: STEP: 10
Calibration
Degauss

Valve Status

Operation
Standard Aperture Stage
Illumination
MODE: TEM EDS NBD CBD
Spot Size Alpha
Bright/Dark: Bright Dark
Function: MAG MAG2 LMAG SAM DfF
MAG:
DEF Select
Alignment: Gun CL Image PROJ
Stigmator: CL OL IL
OBJ Focus Step: 1 OL Step: 2
Wobler: Screen Settings Beam Stopper
HT OBJ Image x y
FreeAp...

V39 V4 V37 V36 V10 V2
DP2 RT2 DP1 RT1 RP1 RP2
PG6 PG5
PEG1 Status: Vac Ready
Column / PG1: Status: Evac Ready 24 µA
Specimen / PG4: Status: Evac Ready 21 µA
Camera / PG3: Status: Evac Ready 27 µA
RT1 / PG5: Status: Evac Ready 82 µA
RT2 / PG6: Status: Evac Ready 26 µA





Micrograph
File Edit Display Process Analysis Window Microscope Spectrum EELS EPTM Volume Custom Camera Help
Microscope TEM (S) 2016-02-26

Microscope Display

Microscope System
300 kV IMAGING
Mag: x 800k



Calibration
Camera Monitor
Stage Tracker

Technique Manager

EPTM Map

Camera
3.0 100
View
Capture
EELS correct

Filter State
Energy Loss
Gifload
Save

EFTEM
Capture
Thickener map

EFTEM Grid

ColorMk

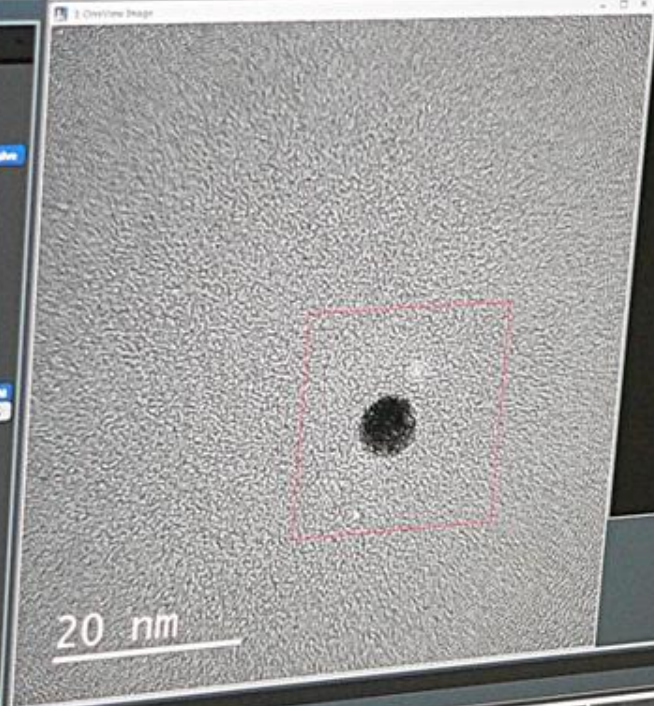


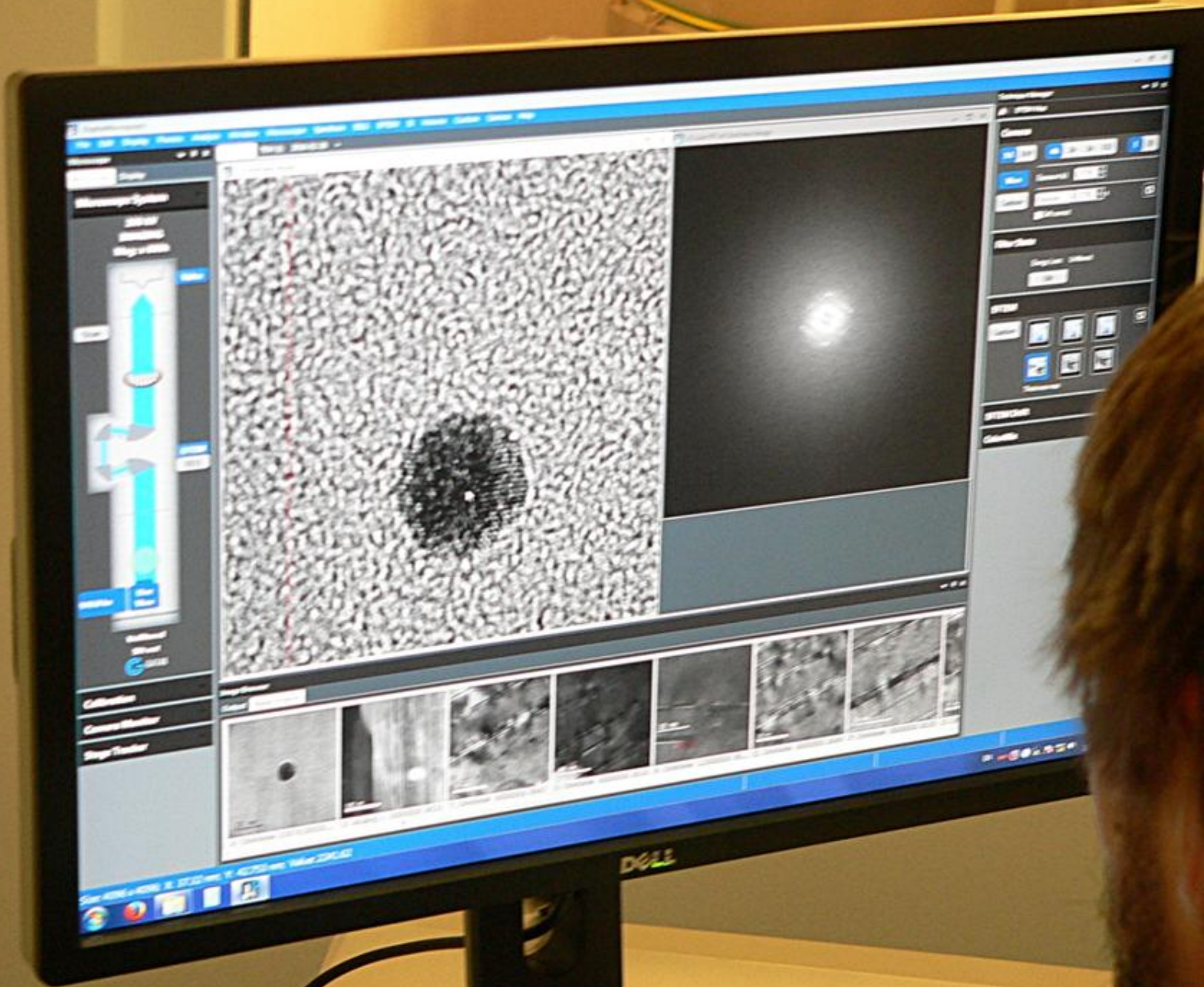
Image Browser

Output: [Image Browser](#)



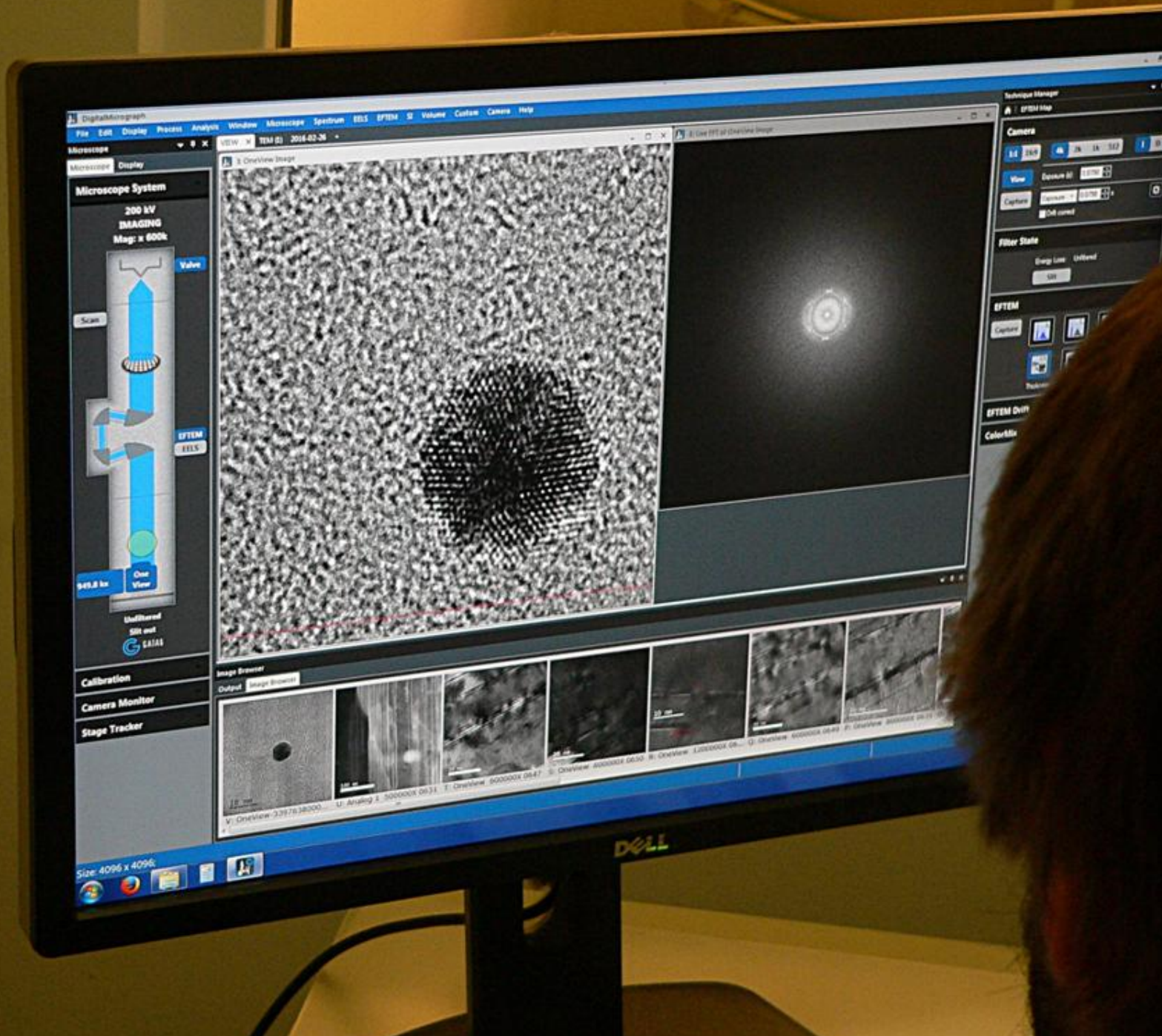
Size: 4096 x 4096; X: 34.129 nm; Y: 48.059 nm; Value: 2929.12

DELL



Measurement System

2000
1000
500
250
125
62.5
31.25
15.625
7.8125
3.90625
1.953125
0.9765625
0.48828125
0.244140625
0.1220703125
0.06103515625
0.030517578125
0.0152587890625
0.00762939453125
0.003814697265625
0.0019073486328125
0.00095367431640625
0.000476837158203125
0.0002384185791015625
0.00011920928955078125
0.000059604644775390625
0.0000298023223876953125
0.00001490116119384765625
0.000007450580596923828125
0.0000037252902984619140625
0.00000186264514923095703125
0.000000931322574615478515625
0.0000004656612873077392578125
0.00000023283064365386962890625
0.000000116415321826934814453125
0.0000000582076609134674072265625
0.00000002910383045673370361328125
0.000000014551915228366851806640625
0.0000000072759576141834259033203125
0.00000000363797880709171295166015625
0.000000001818989403545856475830078125
0.0000000009094947017729282379150390625
0.00000000045474735088646411895751953125
0.000000000227373675443232059478759765625
0.0000000001136868377216160297393798828125
0.00000000005684341886080801486968994140625
0.000000000028421709430404007434844970703125
0.0000000000142108547152020037174224853515625
0.00000000000710542735760100185871124267578125
0.000000000003552713678800500929355621337890625
0.0000000000017763568394002504646778106689453125
0.00000000000088817841970012523233890533447265625
0.00000000000044408920985006261616945266723828125
0.000000000000222044604925031308084726333619140625
0.0000000000001110223024625156540423631668095703125
0.0000000000000555111512312578270211815833402890625
0.0000000000000277555756156289135105907916701453125
0.00000000000001387778780781445675529539583507265625
0.000000000000006938893903907228377647697917536328125
0.00000000000000346944695195361418882384895876640625
0.0000000000000017347234759768070944119244793828125
0.0000000000000008673617379884035472059623969140625
0.0000000000000004336808689942017736029811984703125
0.00000000000000021684043449710088680149059923515625
0.000000000000000108420217248550443400745299619140625
0.0000000000000000542101086242752217003726498095703125
0.0000000000000000271050543121376108501863249402890625
0.0000000000000000135525271560688054250931624721453125
0.000000000000000006776263578034402712546581236106640625
0.0000000000000000033881317890172013562729056805328125
0.000000000000000001694065894508600678136452840265625
0.0000000000000000008470329472543003390682264201328125
0.00000000000000000042351647362715016953411321006640625
0.000000000000000000211758236813575084767056605033203125
0.0000000000000000001058791184067875423835283025166015625
0.000000000000000000052939559203393771191764151250830078125
0.00000000000000000002646977960169688559588207562504140625
0.00000000000000000001323488980084844279794103781250219140625
0.0000000000000000000066174449004242213989705189062501095703125
0.0000000000000000000033087224502121106994852594530078125
0.000000000000000000001654361225106055349974279726640625
0.0000000000000000000008271806125530276749871398633203125
0.00000000000000000000041359030627651383749356993166015625
0.000000000000000000000206795153138266918746784965830078125
0.0000000000000000000001033975765691334593733924829150390625
0.00000000000000000000005169878828456672968669624145703125
0.000000000000000000000025849394142283364843348120728515625
0.000000000000000000000012924697071141672421669060364265625
0.0000000000000000000000064623485355708362108345301821328125
0.00000000000000000000000323117426778541810541726509106640625
0.0000000000000000000000016155871338927090527086325455328125
0.00000000000000000000000080779356694635452635431627276640625
0.0000000000000000000000004038967834731772631771581363830078125
0.00000000000000000000000020194839173658863158857906819150390625
0.000000000000000000000000100974195868294315794289534095703125
0.0000000000000000000000000504870979341471578971447670478125
0.00000000000000000000000002524354896707357894857238352390625
0.00000000000000000000000001262177448353678947428619170119140625
0.000000000000000000000000006310887241768394737143095850595703125
0.0000000000000000000000000031554436208841973685715479252978125
0.00000000000000000000000000157772181044209868428577396264890625
0.000000000000000000000000000788860905221049342142886981324453125
0.0000000000000000000000000003944304526105246710714434906622265625
0.0000000000000000000000000001972152263052623355357217453311328125
0.00000000000000000000000000009860761315263116776786087266556640625
0.00000000000000000000000000004930380657631558388893043633278125
0.000000000000000000000000000024651903288157791944465218166390625
0.000000000000000000000000000012325951644078895972222609083319140625
0.0000000000000000000000000000061629758220394479861113045416595703125
0.0000000000000000000000000000030814879110197239930556522707978125
0.00000000000000000000000000000154074395550986199652782613539890625
0.000000000000000000000000000000770371977754930998263913067699453125
0.0000000000000000000000000000003851859888774654991319565338497265625
0.00000000000000000000000000000019259299443873274956597826692486328125
0.0000000000000000000000000000000962964972193663747829891334624316640625
0.000000000000000000000000000000048148248609683187391494566731219140625
0.0000000000000000000000000000000240741243048415936957472833656095703125
0.00000000000000000000000000000001203706215242079684787364168280478125
0.000000000000000000000000000000006018531076210398423936820841402390625
0.00000000000000000000000000000000300926553810519921196841042070119140625
0.000000000000000000000000000000001504632769052599605984205210350595703125
0.0000000000000000000000000000000007523163845262998029921026051752978125
0.0000000000000000000000000000000003761581922631499401496053025876486328125
0.000000000000000000000000000000000188079096131574970074802651293824316640625
0.00000000000000000000000000000000009403954806578748503740132564691219140625
0.00000000000000000000000000000000004701977403289374251870066282345595703125
0.000000000000000000000000000000000023509887016446871259350331411727978125
0.0000000000000000000000000000000000117549435082234356296751657058639890625
0.00000000000000000000000000000000000587747175411171781483758285293497265625
0.000000000000000000000000000000000002938735877055858907418791426467486328125
0.0000000000000000000000000000000000014693679385279294537093957132337219140625
0.00000000000000000000000000000000000073468396926396472685469785661686095703125
0.00000000000000000000000000000000000036734198463198236342734892833083497265625
0.000000000000000000000000000000000000183670992315991181713674464165417486328125
0.0000000000000000000000000000000000000918354961579955908568372320827239816640625
0.000000000000000000000000000000000000045917748078997795428418616041361991219140625
0.000000000000000000000000000000000000022958874039498897714209308020680995595703125
0.000000000000000000000000000000000000011479437019749448857104654010340497265625
0.000000000000000000000000000000000000005739718509874724428552327005170239816640625
0.00000000000000000000000000000000000000286985925493736221427616350258511991219140625
0.0000000000000000000000000000000000000014349296274686811071380817512925995595703125
0.0000000000000000000000000000000000000007174648137343405535690408756462997265625
0.00000000000000000000000000000000000000035873240686717027678452043782314986328125
0.0000000000000000000000000000000000000001793662034335851383922602189115991219140625
0.00896831017167925691961301094557995595703125
0.00448415508583962845980650547278997265625
0.002242077542919814229903252736394986328125
0.001121038771459907114995126368197486328125
0.0005605193857299535574997631840987486328125
0.00028025969286497677874988159204937486328125
0.000140129846432488389374944296024687486328125
0.00700649232162441946874721480123437486328125
0.003503246160812209734373607400617187486328125
0.0017516230804061048671868037003085937486328125
0.00087581154020305243359340185015429687486328125
0.000437905770101526216796700925077148437486328125
0.000218952885050763108398350462538572187486328125
0.0001094764425253815541991752312692860937486328125
0.0054738221262690777099587615634614304687486328125
0.00273691106313453885497938078173071523437486328125
0.001368455531567269427489690390865357617187486328125
0.0006842277657836347137448451954326788085937486328125
0.000342113882891817356872422597716339429687486328125
0.0001710569414459086784362112988581697148437486328125
0.008552847072295433921810564942908487148437486328125
0.0042764235361477169609052824714542437148437486328125
0.00213821176807385848045264123572712187148437486328125
0.001069105884036929240226320617863560937148437486328125
0.0005345529420184646201131603089317804687148437486328125
0.00026727647100923231005658015446589023437148437486328125
0.000133638235504616155028290077232945117187148437486328125
0.00668191177523080775141450386164725585937148437486328125
0.003340955887615403875707251930823627899687148437486328125
0.001670477943807701937853625965411613949487148437486328125
0.0008352389719038509689268129827055807472437148437486328125
0.00041761948595192548446340649135279037148437486328125
0.000208809742975962742231703245676395187148437486328125
0.00010440487148798137111585162283781978937148437486328125
0.0052202435743990685557925811416898944687148437486328125
0.00261012178719953427789629057084494723437148437486328125
0.001305060893599767138898145285422473617148437486328125
0.0006525304467998835694490726427112368085937148437486328125
0.000326265223399941784724536321355618404687148437486328125
0.0001631326116999708923622681606777802023437148437486328125
0.008156630584998544618113408033889010117148437486328125
0.0040783152924992722590567040169445050585937148437486328125
0.00203915764624963612952835200847225252923437148437486328125
0.00101957882312481806476417600423612613617148437486328125
0.000509789411562409032382088002118063068085937148437486328125
0.00025489470578120451619104400105903153404687148437486328125
0.000127447352890



DigitalMicrograph
File Edit Display Records Analysis Windows Microscope Spectrum EELS EFTM SI Volume Custom Camera Help

Microscope Display
VIEW x TEM (S) 2014-02-24

Microscope System

200 kV
IMAGING
Mag: x 600k



Calibration
Camera Monitor
Stage Tracker

Technique Manager

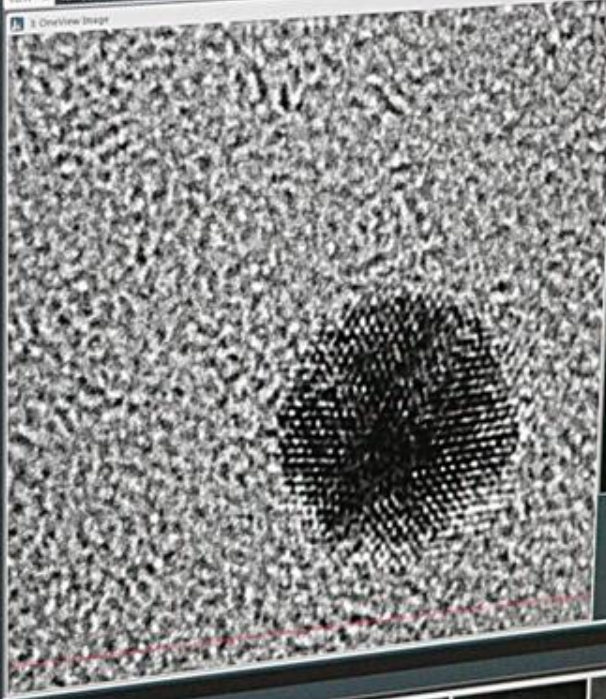
EFTM Map

Camera
View Exposure 0.1 0.170
Custom Exposure 0.170
SM count

Filter State
Energy Loss Offload
On

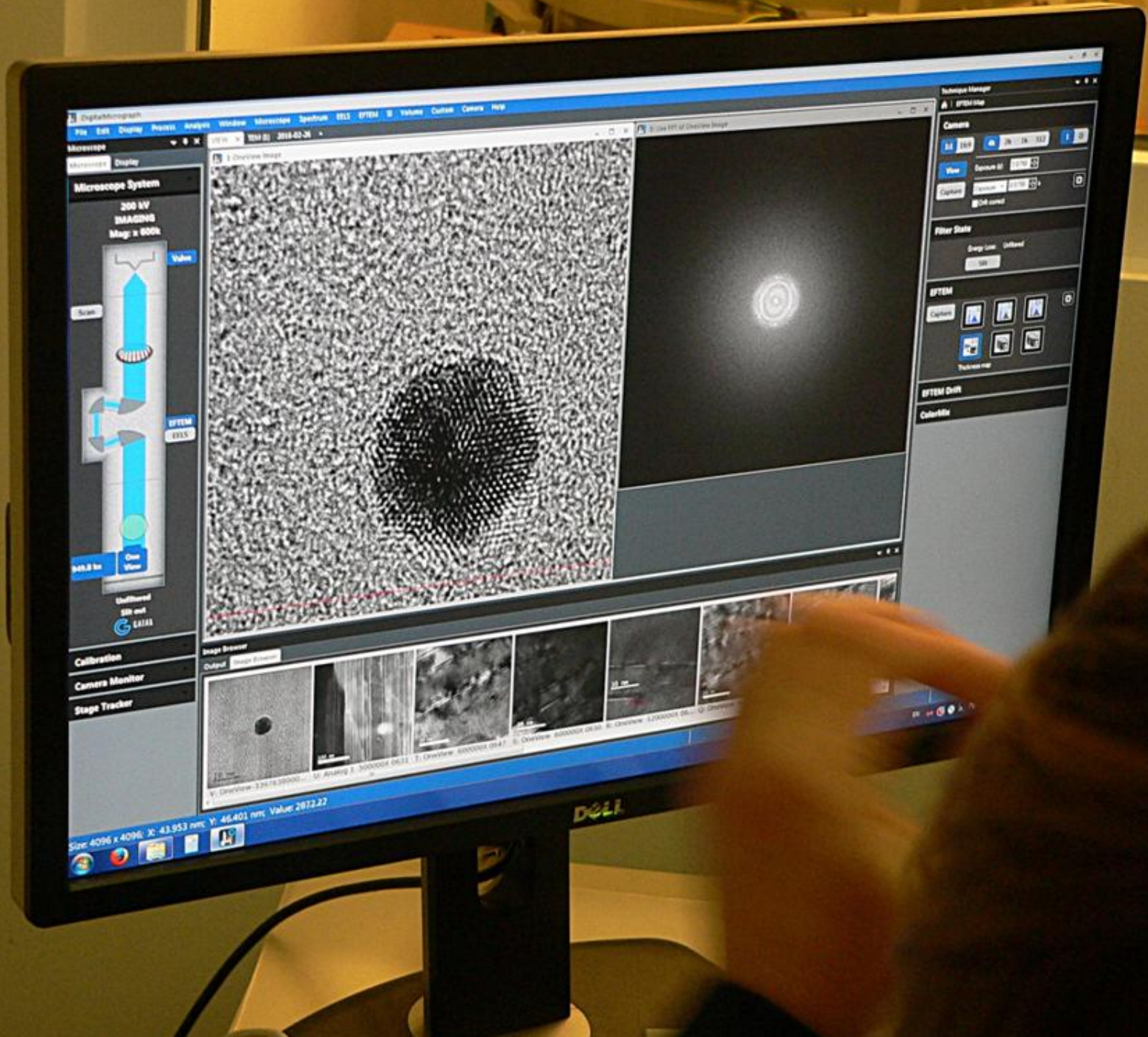
EFTM
Custom
Position

EFTM Diff
ColorMap



Size: 4096 x 4096

DELL



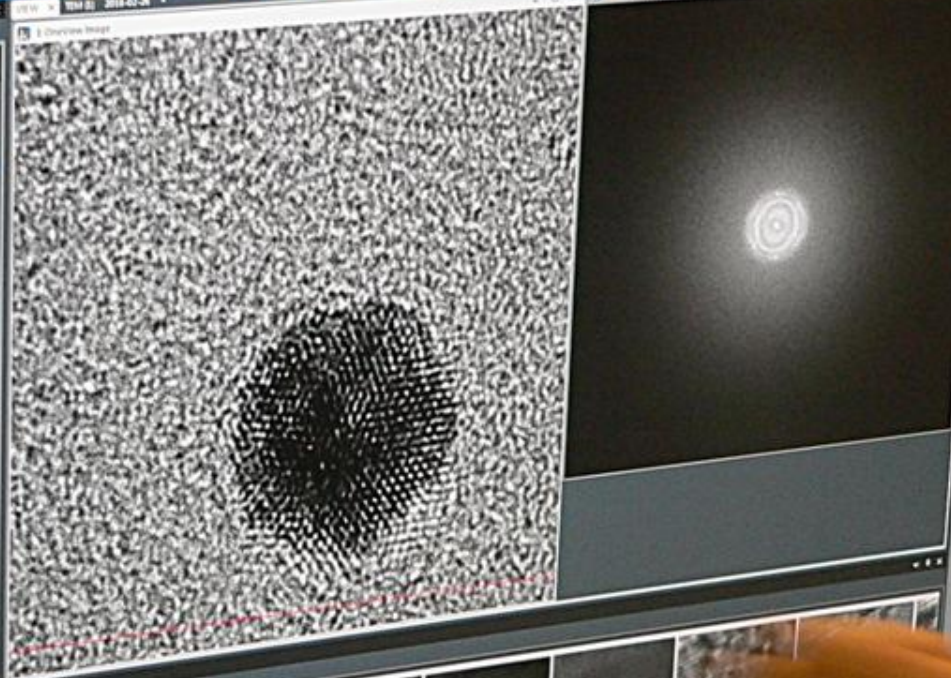
DigitalMicrograph
File Edit Display Process Analysis Windows Microscope Spectrum EELS EPTM Volume Custom Camera Help

Microscope Display

Microscope System



Calibration
Camera Monitor
Stage Tracker



Technique Manager

EPTM Site

Camera

View
Camera ID: 1570
Camera Name: 1570
OK cancel

Filter State

Energy Loss: Utilized
Filter

EPTM

Custom
EELS
EPTM
Thickness map

EPTM Data

ColorMap

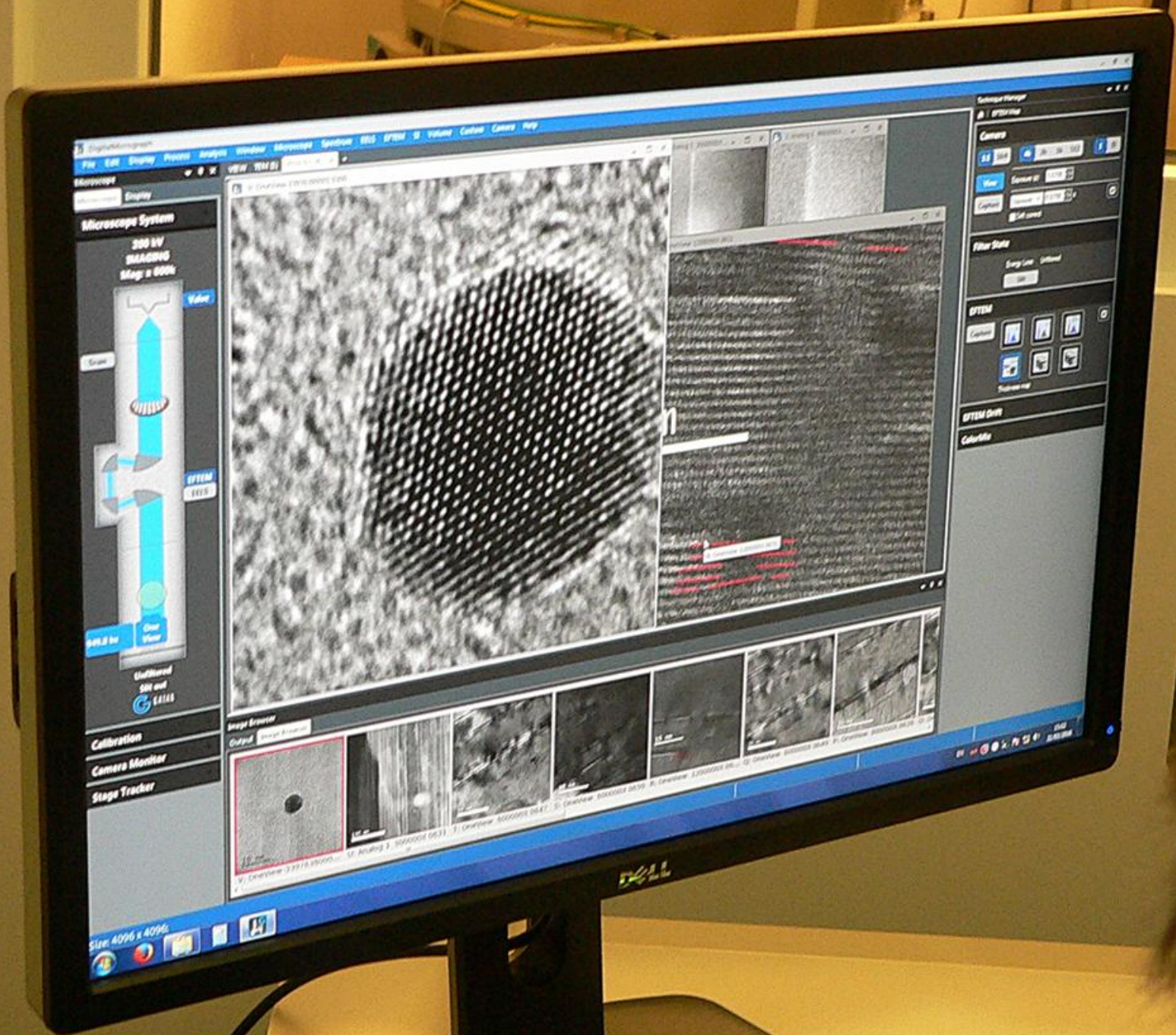
Image Browser

Output: Image Browser

V: C:\Program Files\DigitalMicrograph\...
V: C:\Program Files\DigitalMicrograph\...
V: C:\Program Files\DigitalMicrograph\...
V: C:\Program Files\DigitalMicrograph\...
V: C:\Program Files\DigitalMicrograph\...

Size: 4096 x 4096 X: 43.953 nm Y: 46.401 nm Value: 2672.22

DELL

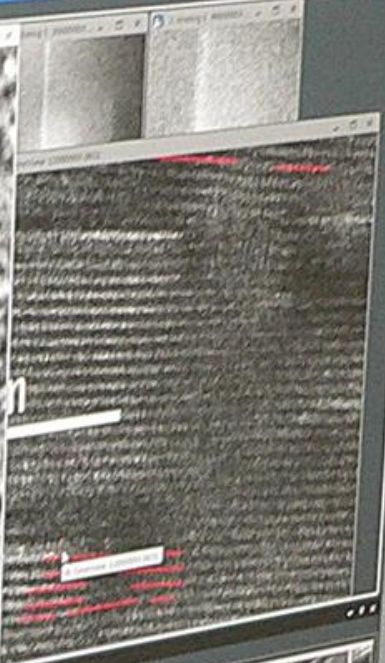
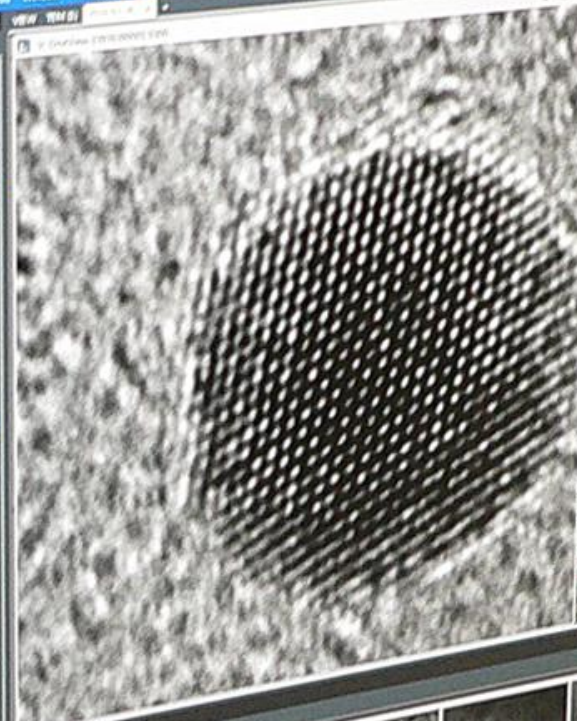


Microscope System

300 kV
MAGNIFY
Mag x 800k



Calibration
Camera Monitor
Stage Tracker



Settings Manager

Camera

View

Filter State

Energy Line

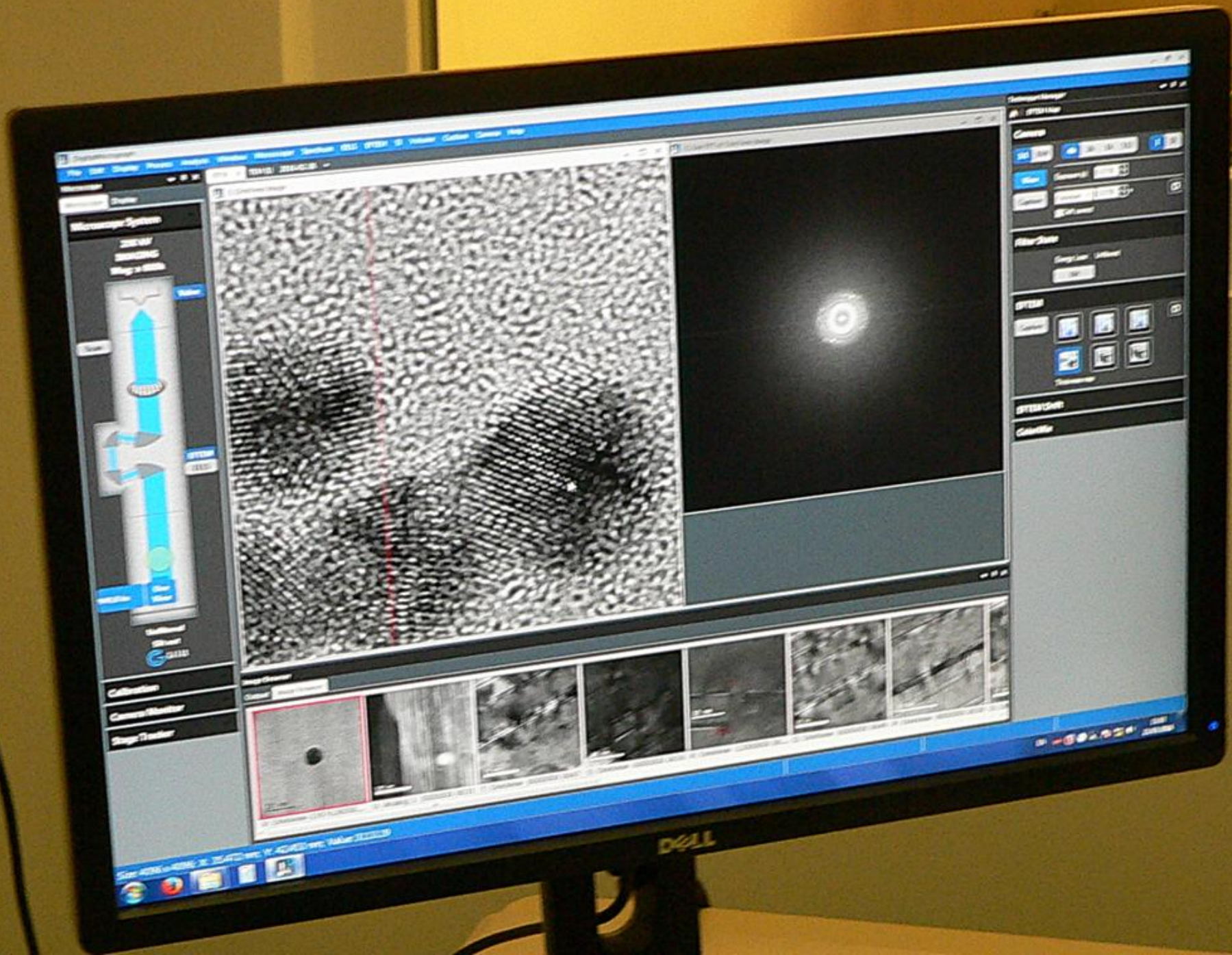
EPU

EPU

Colorable

Size: 4096 x 4096

10/21/2014 11:41:38 AM



Microscope System

300 kV IMAGING Mag = 800x

200.0 keV Clear View

Electron Gun and LENS

Calibration

Camera Monitor

Stage Tracker

Microscope

Display

File Edit Display Process Analyze Window Microscope Spectrum EELS EDSM D Volume Contrast Camera Help

VIEW: SEM-BI

Image Browser

Output

200 nm

SPTEM Manager

Customs

Filter State

SPTEM

SPTEM Data

ColorMap

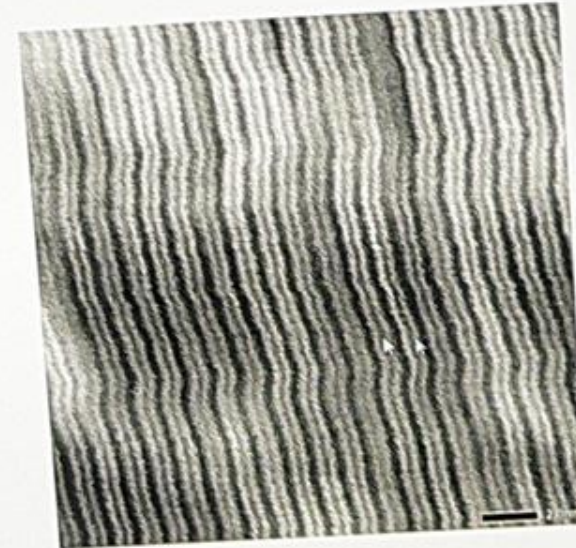
Size: 4096 x 4096; X: 7.6816 nm; Y: 28.037 nm; Value: 24.0213

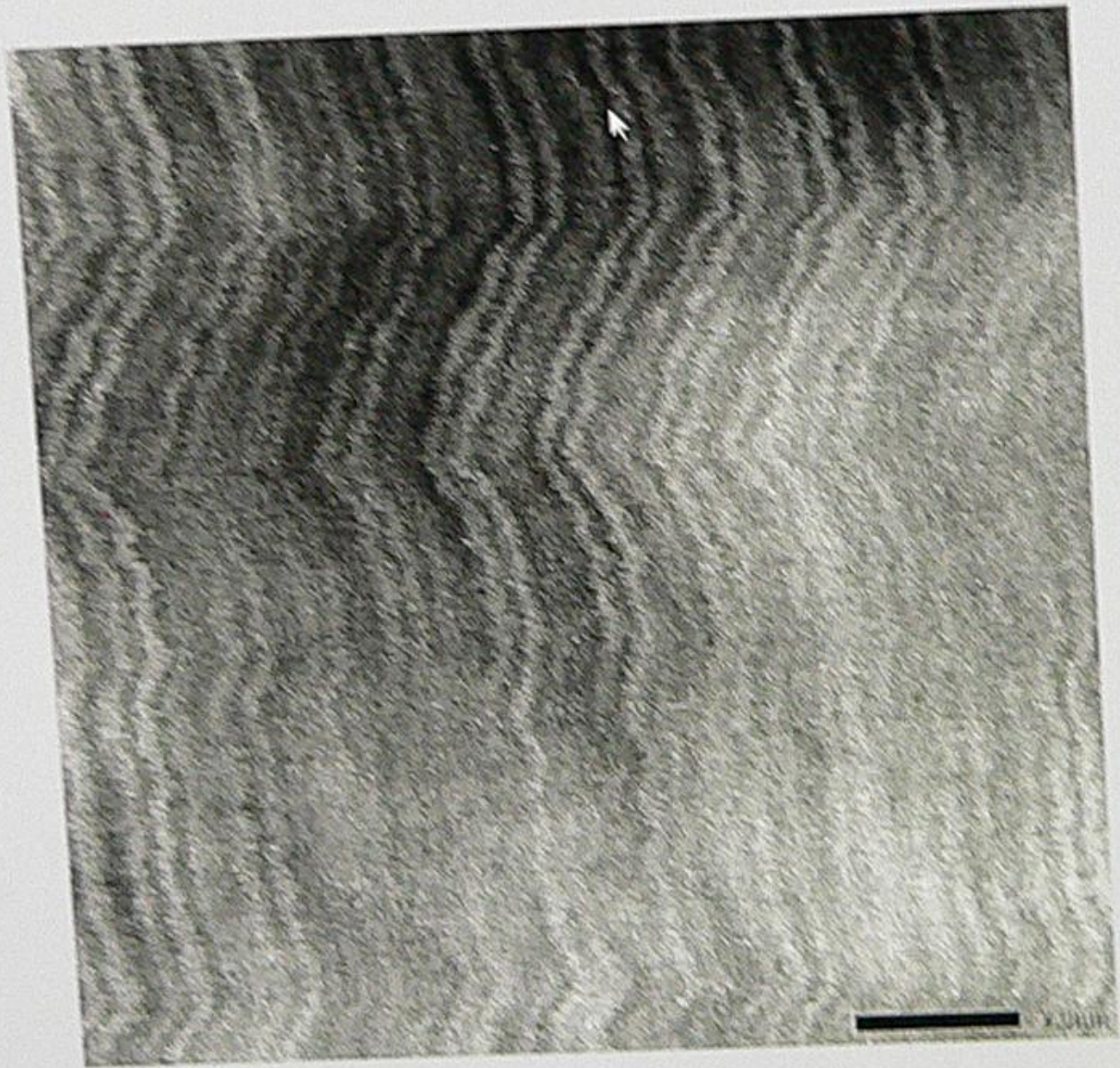


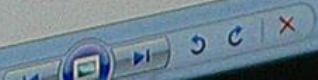
View Control Setting Help
Open File Save File Full Window Zoom 100% Microbar Rotate File Pointer Wand Line Polygon Rect Ellipse Angle Diff Profile Text

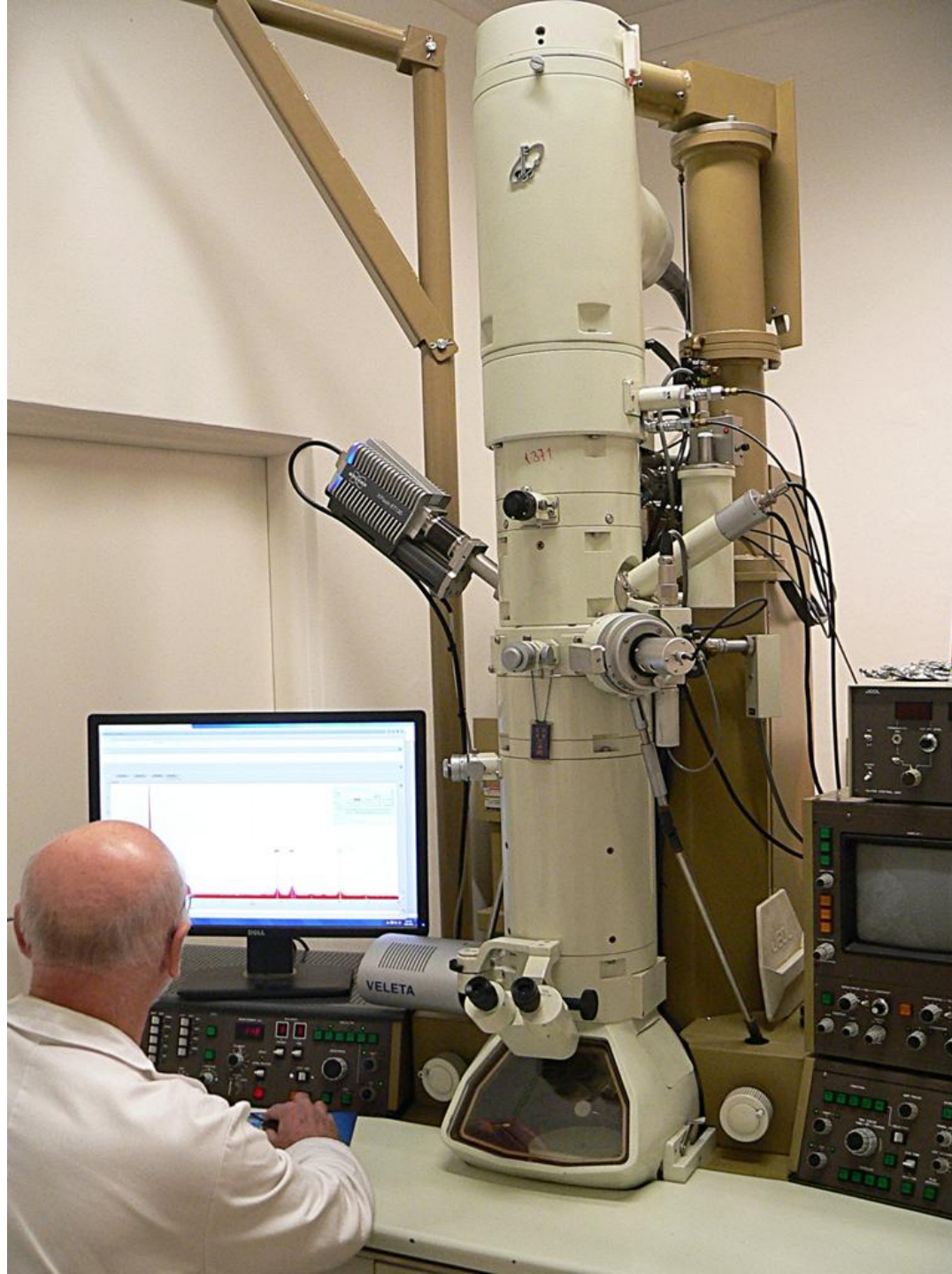
Task Bar
EM Status
Histogram Control
Histogram
Auto adjust Show Details
Average 3 26
16383 Set
Measuring Brightness Method
Spot Metering
Center Area Metering
Full Area Metering
Exposure
Auto 0.20
Exposure
150.00 msec (150.00 msec * 1)
Scale: Linear Log

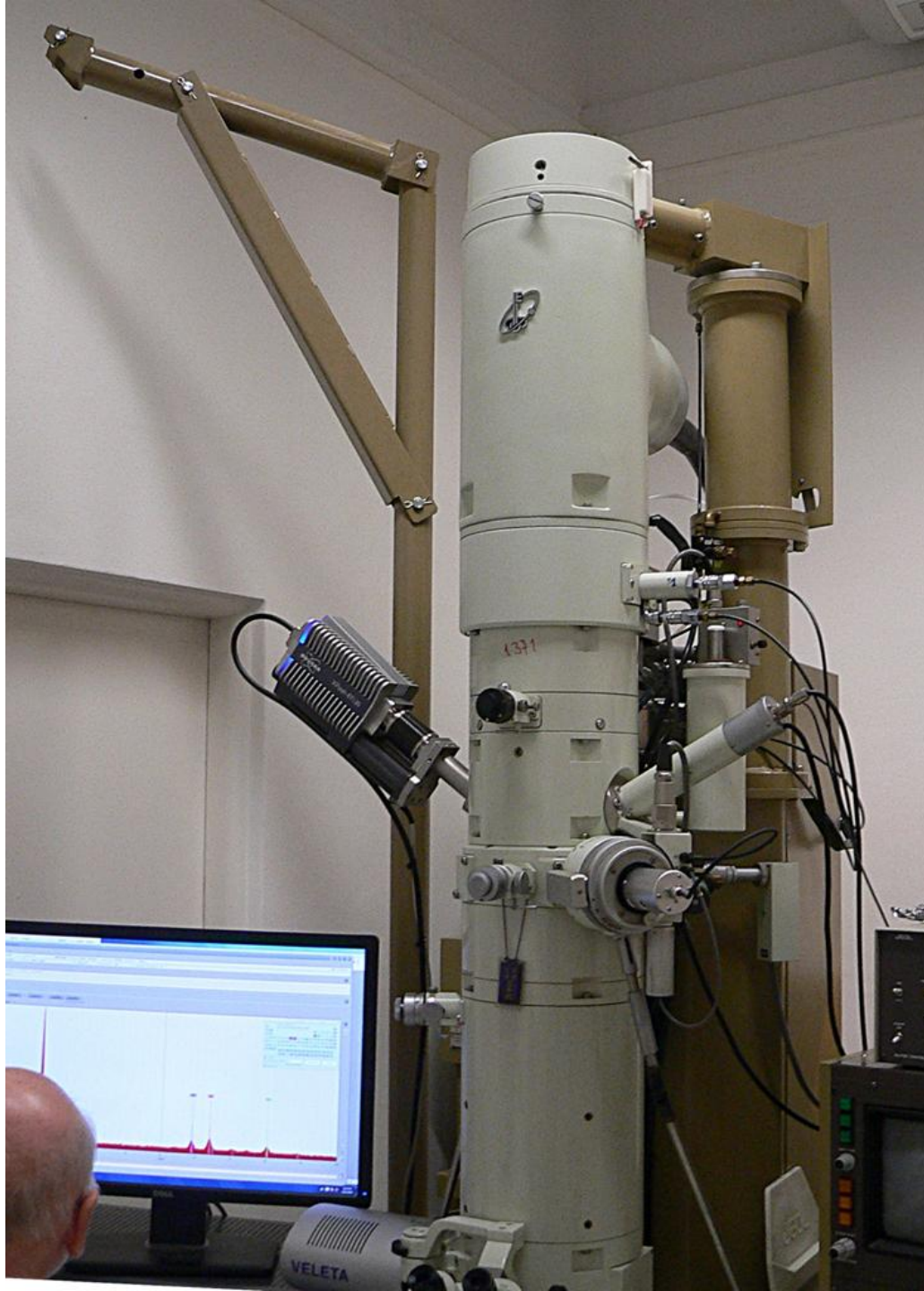
Windows Explorer
Computer > Windows (C:) > data > 2016 > 05e > 2016-02-01 STEM B2Se1 > 2016-02-01 STEM B2Se1
Organize Preview Share with Slide show Print Burn
Favorites
Desktop
Recent Places
Libraries
Documents
Music
Pictures
Videos
Homegroup
Computer
Windows (C:)
HP_RECOVERY (D:)
Network
ASTAR
GATAN-PC
XEM-2200FS
WINDOWS-H08G1N
041_SMMAG_x8.0 M
042_SMMAG_x8.0 M
051_SMMAG_x8.0 M
052_SMMAG_x8.0 M
053_SMMAG_x8.0 M
054_SMMAG_x8.0 M
055_SMMAG_x8.0 M
056_SMMAG_x8.0 M
061_SMMAG_x8.0 M
062_SMMAG_x8.0 M
063_SMMAG_x8.0 M
064_SMMAG_x8.0 M
065_SMMAG_x8.0 M
066_SMMAG_x8.0 M
067_SMMAG_x8.0 M
068_SMMAG_x8.0 M
069_SMMAG_x8.0 M
070_SMMAG_x8.0 M
071_SMMAG_x8.0 M
072_SMMAG_x8.0 M
073_SMMAG_x8.0 M
074_SMMAG_x8.0 M
075_SMMAG_x8.0 M
076_SMMAG_x8.0 M
077_SMMAG_x8.0 M
078_SMMAG_x8.0 M
079_SMMAG_x8.0 M
080_SMMAG_x8.0 M
081_SMMAG_x8.0 M
082_SMMAG_x8.0 M
083_SMMAG_x8.0 M
084_SMMAG_x8.0 M
085_SMMAG_x8.0 M
086_SMMAG_x8.0 M
087_SMMAG_x8.0 M
088_SMMAG_x8.0 M
089_SMMAG_x8.0 M
090_SMMAG_x8.0 M
091_SMMAG_x8.0 M
092_SMMAG_x8.0 M
093_SMMAG_x8.0 M
094_SMMAG_x8.0 M
095_SMMAG_x8.0 M
096_SMMAG_x8.0 M
097_SMMAG_x8.0 M
098_SMMAG_x8.0 M
099_SMMAG_x8.0 M
100_SMMAG_x8.0 M

Windows Photo Viewer
064_SMMAG_x8.0M
File Print E-mail Burn Open

Date created: 2/1/2016 22:38
Date modified: 2/1/2016 22:38
Size: 251 KB
Shared with: Everyone

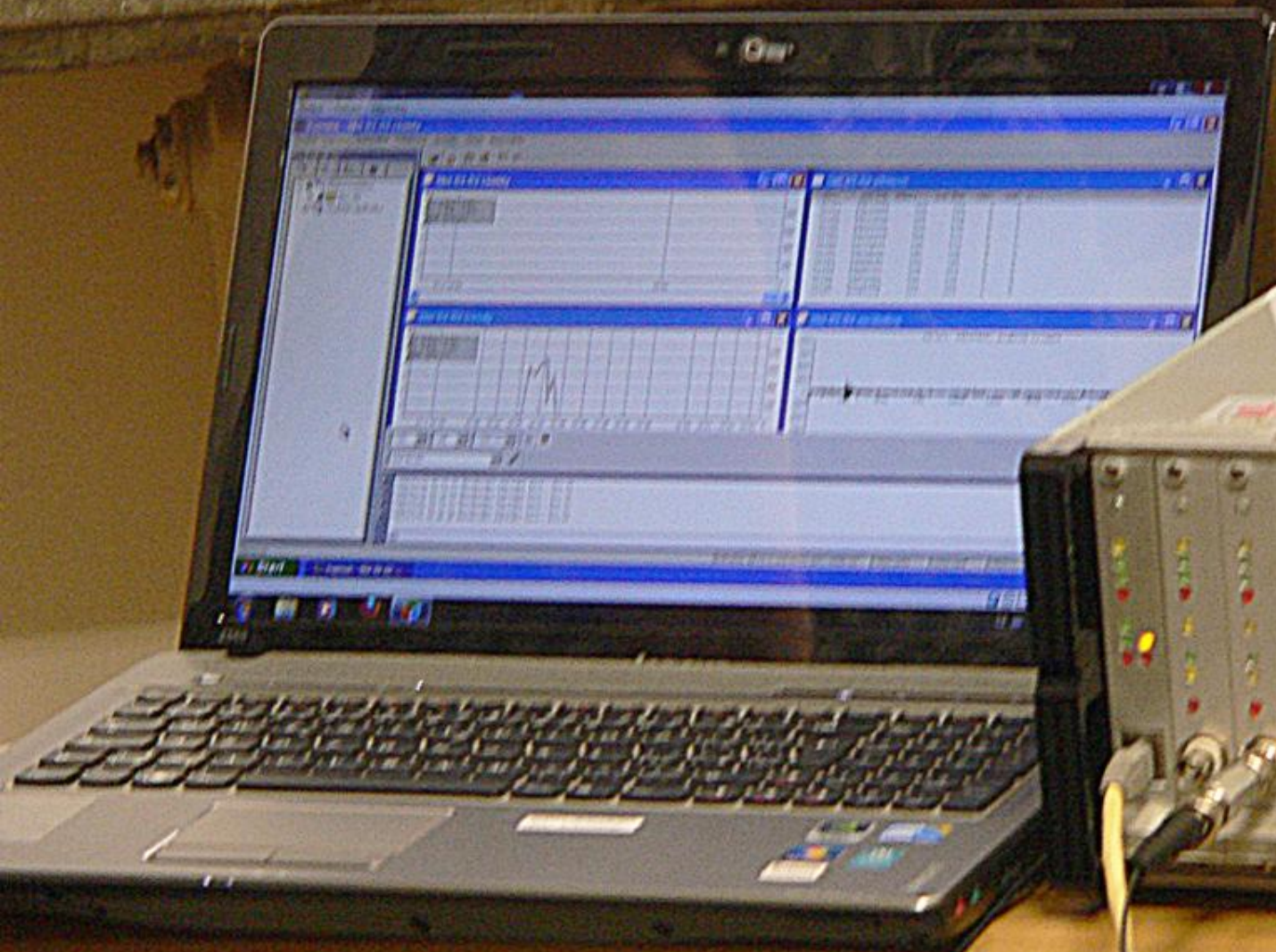


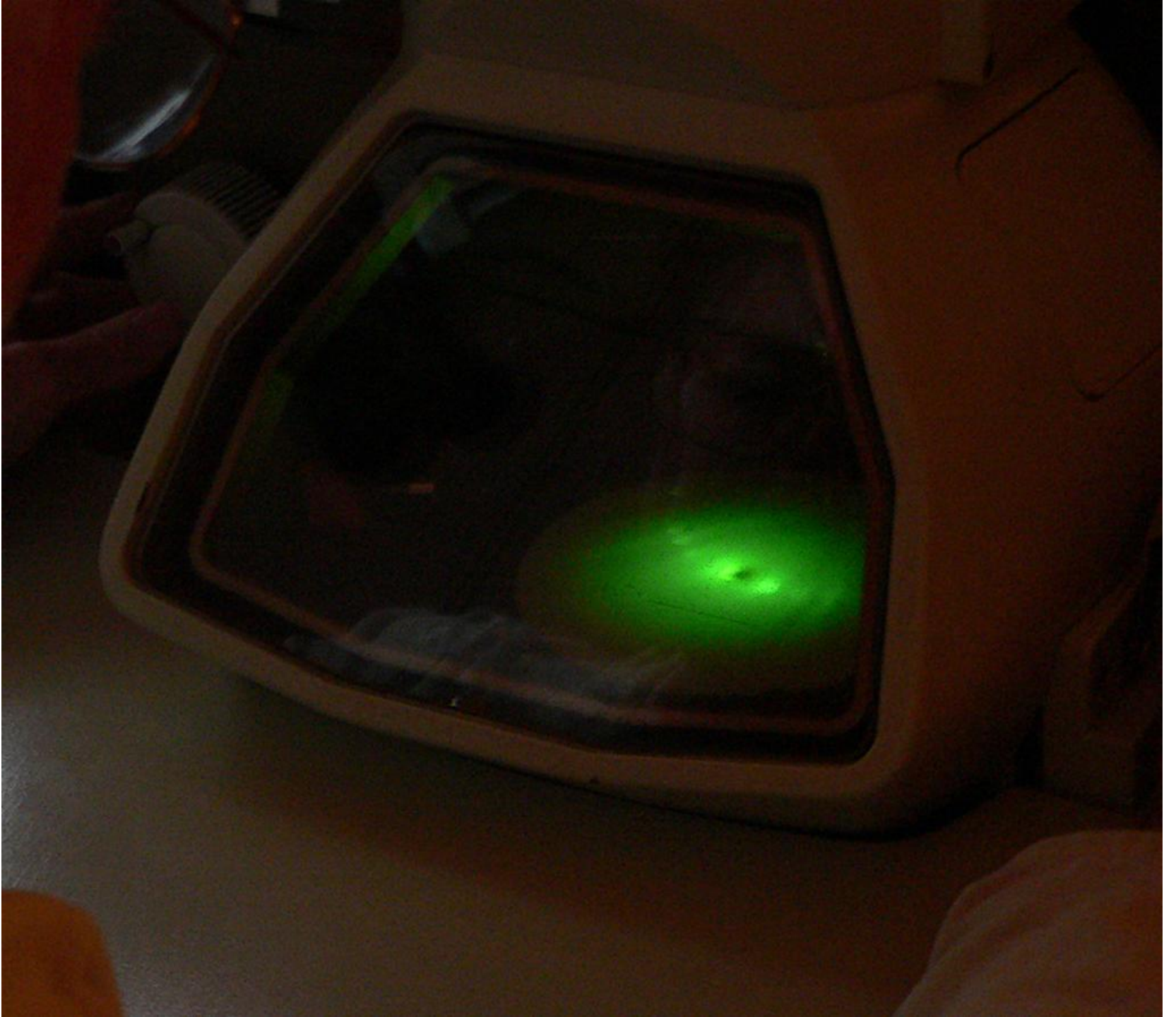


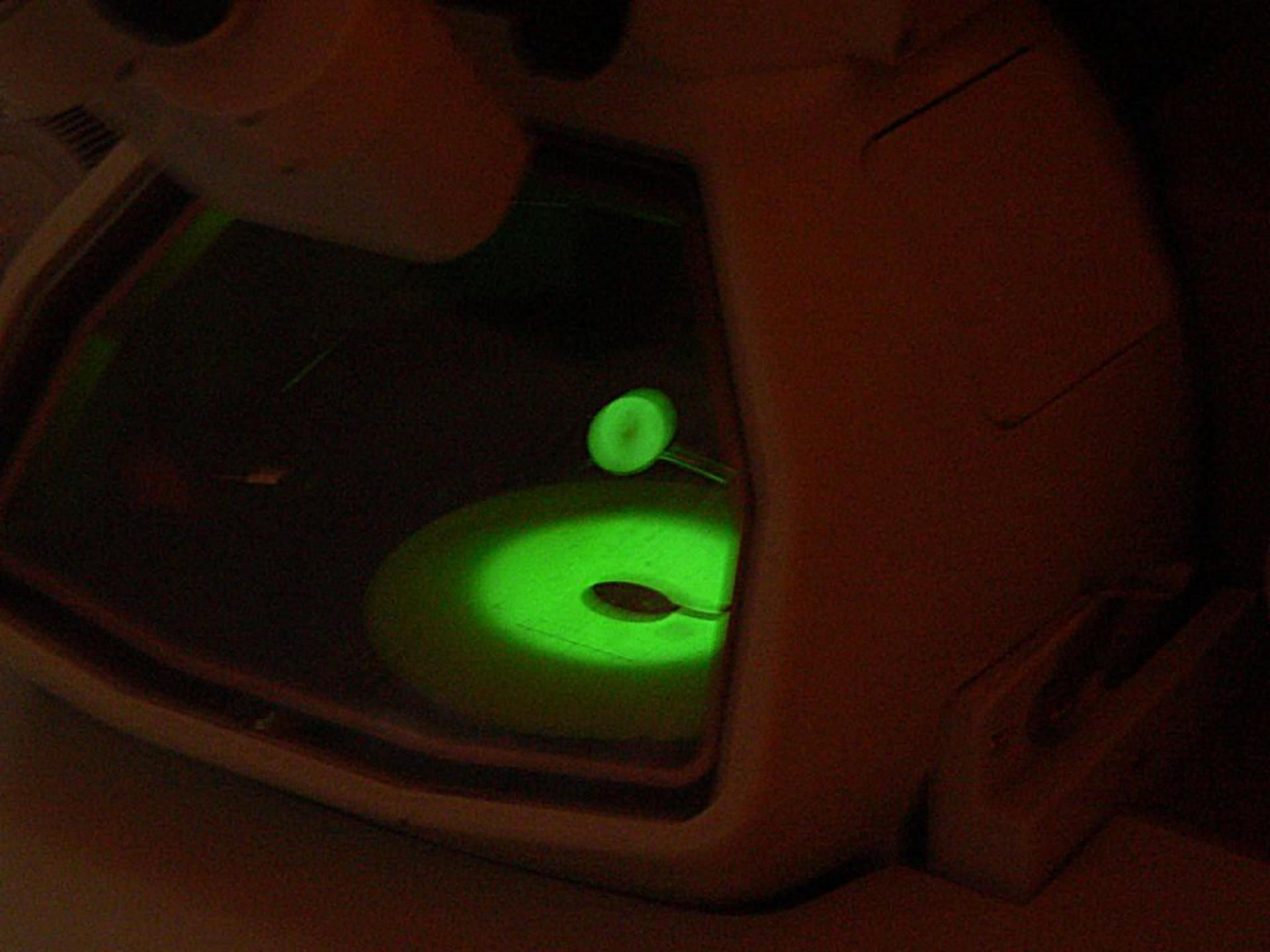


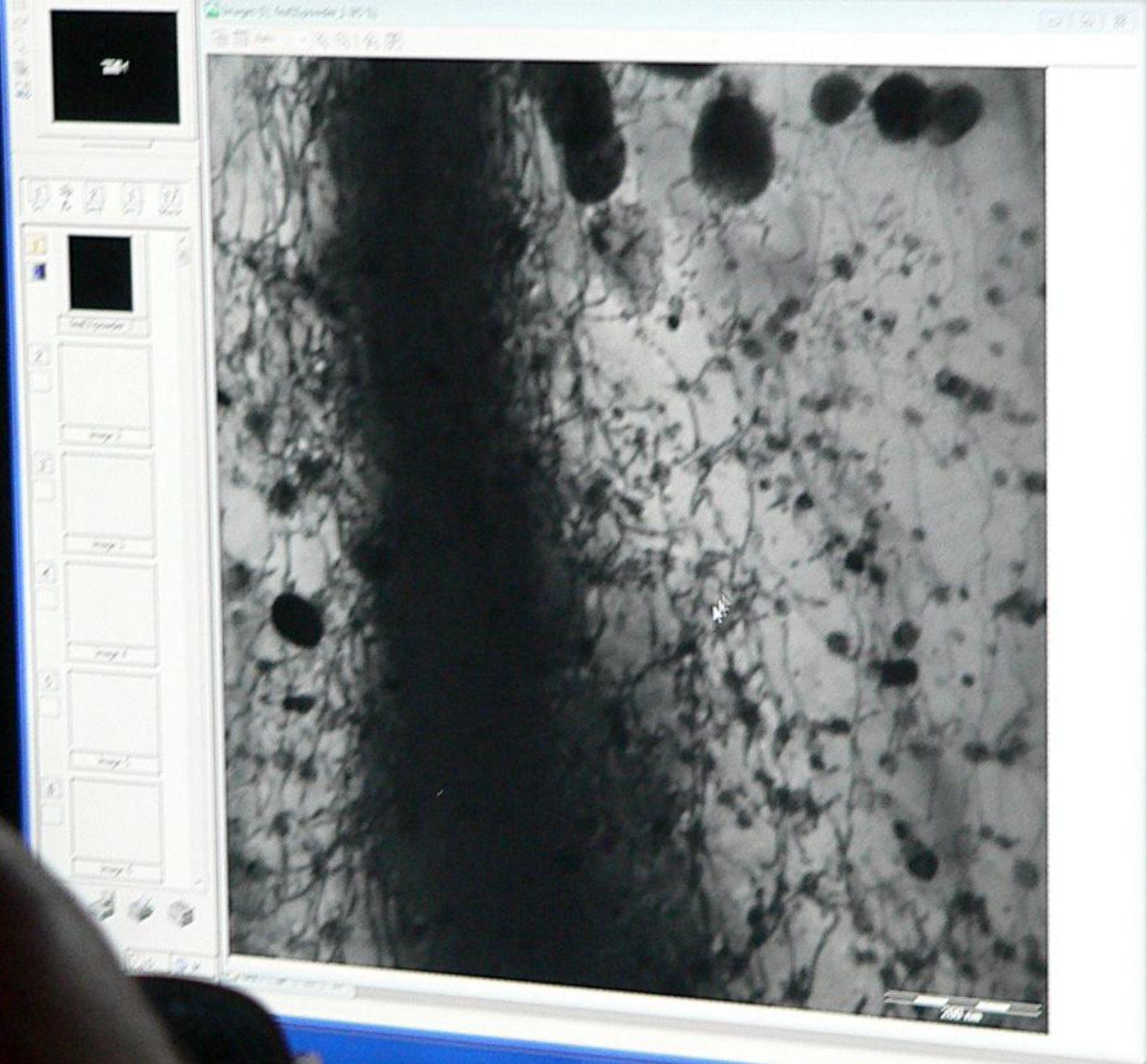


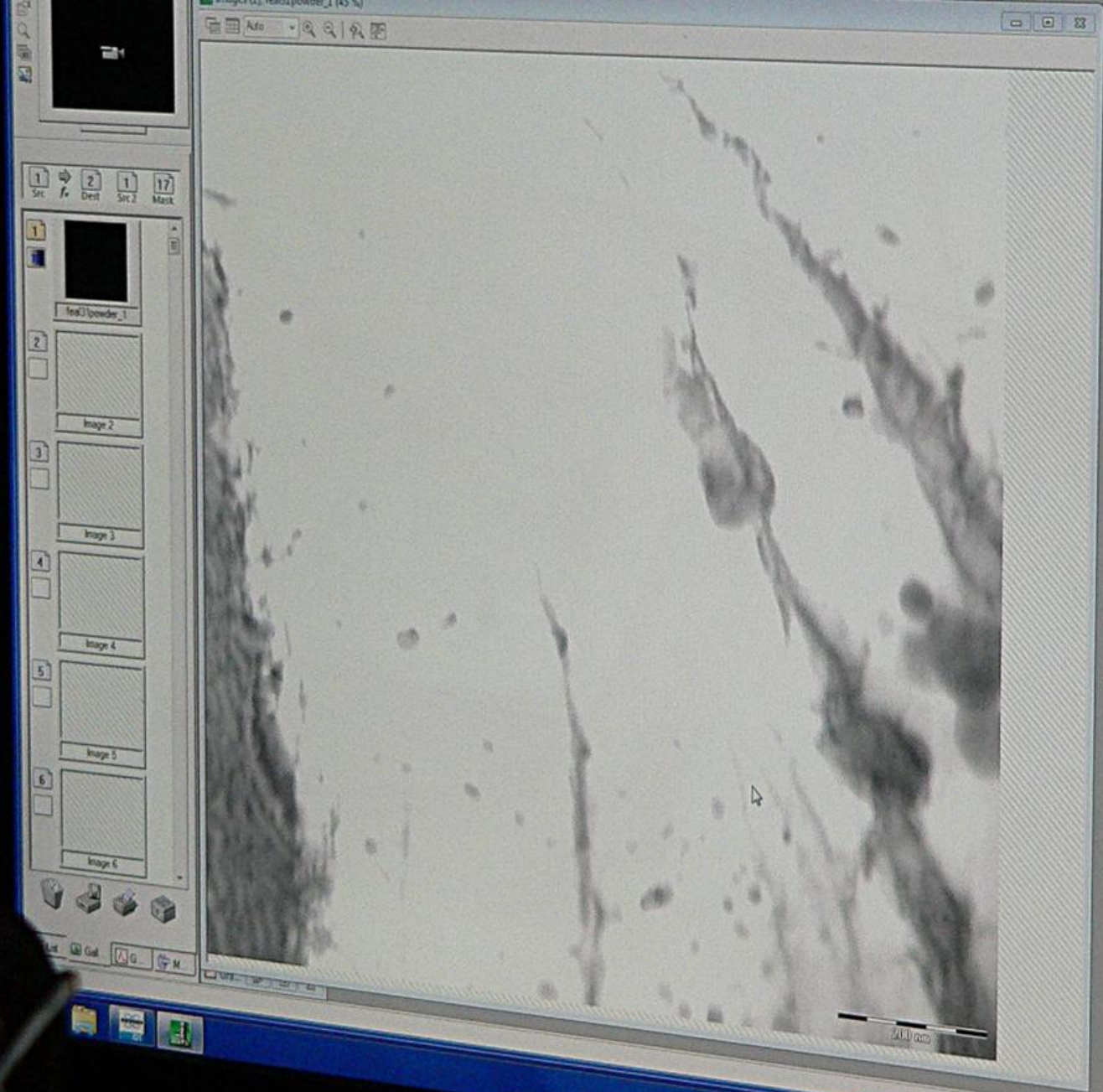












Energy Mode

Devices
Spectrometer Input Off 17.8 kcps Range 10 keV / 30 kcps Dead time 67 % Test time 81 s
Imaging system Normal 2400 x 1800 HV 200.0 kV Magnification 600 WD 5.0 mm Sample ID 01

Project
Information 3/19/2016 4:13:02 PM
0 Counts

Species Process Adjust Validate Quantify
Interactive TCM

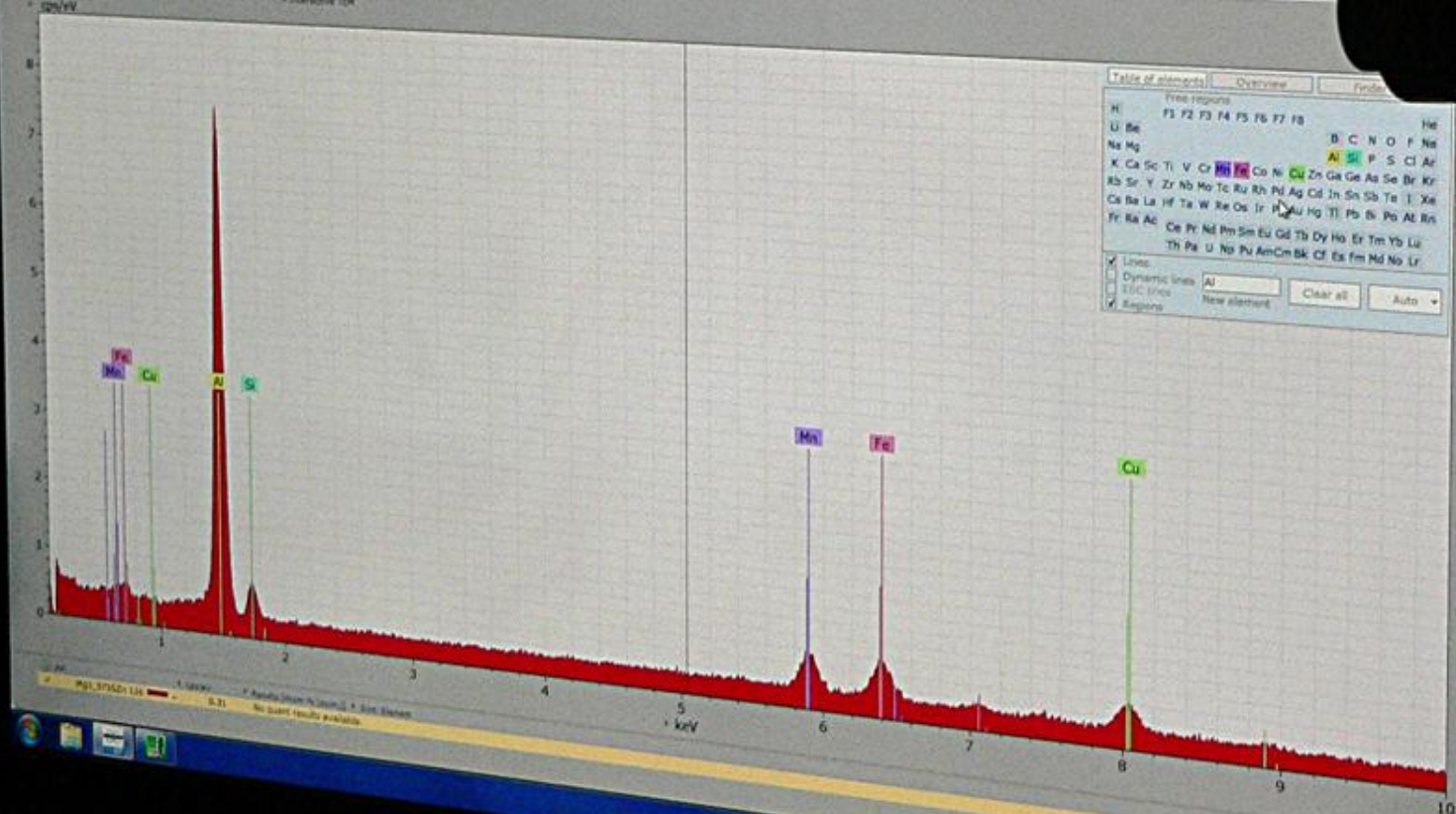


Table of elements Overview Find

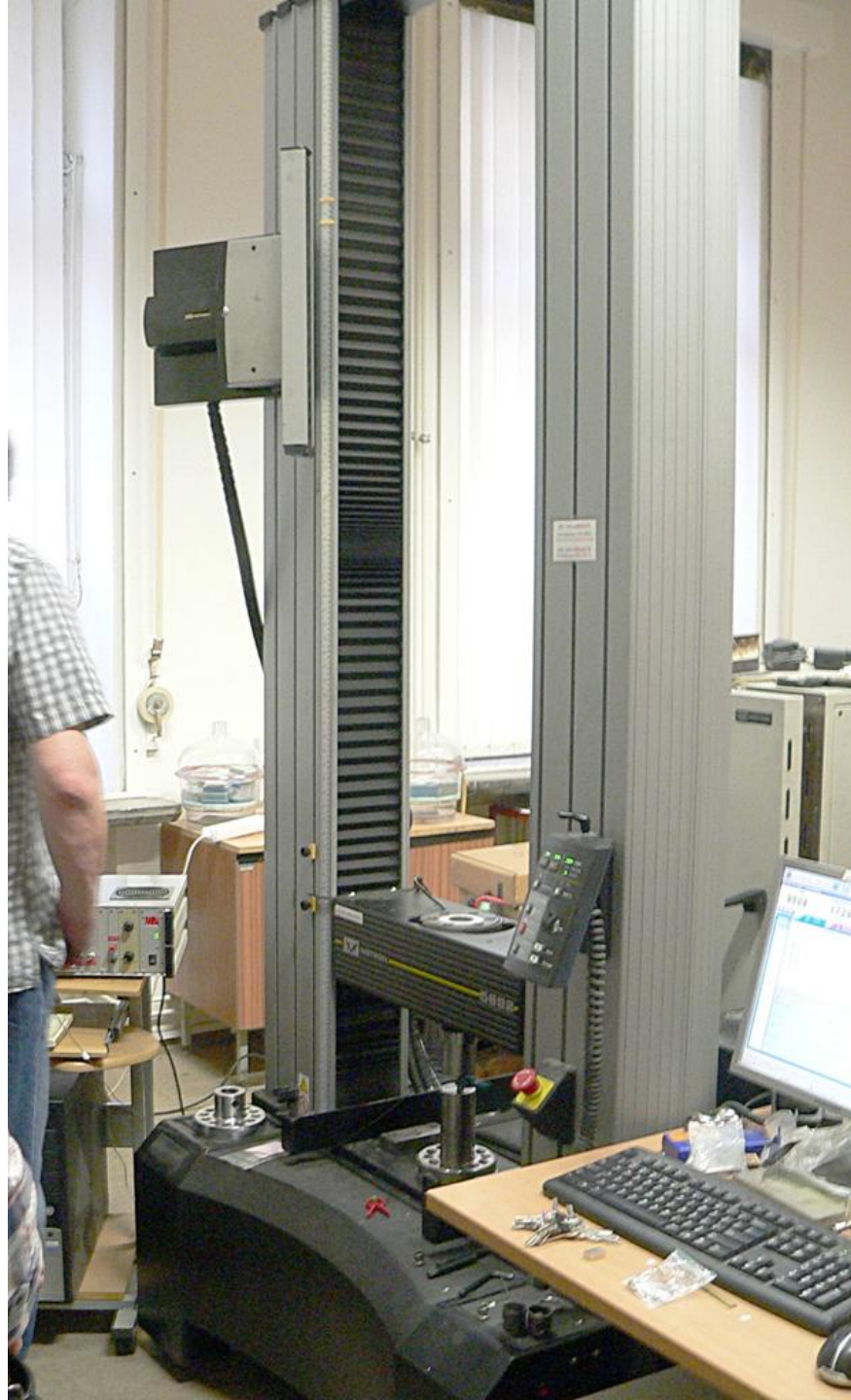
Free regions

H	He
Li Be	B C N O F Ne
Na Mg	Al Si P S Cl Ar
K Ca Sc Ti V Cr Mn Co Ni Cu Zn Ga Ge As Se Br Kr	
Rb Sr Y Zr Nb Mo Tc Ru Rh Pd Ag Cd In Sn Sb Te I Xe	
Cs Ba La Hf Ta W Re Os Ir Pt Au Hg Tl Pb Bi Po At Rn	
Fr Ra Ac	Ce Pr Nd Pm Sm Eu Gd Tb Dy Ho Er Tm Yb Lu
	Th Pa U Np Pu Am Cm Bk Cf Es Fm Md No Lr

Lines
 Dynamic lines
 LSC lines
 Regions

AI New element Clear all Auto

1.0000
Pkg: 375201126
0.71
No quant results available



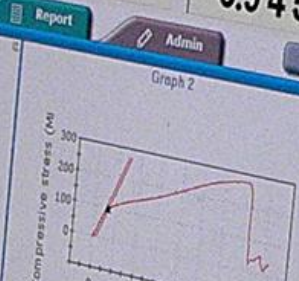
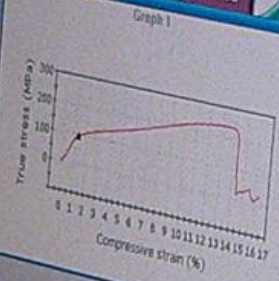


Use this computer (DELL) for the tests only!!!
Do not install new SW. Do not access the Internet.

37A260_2k_comp - Indrom Biorfall

Time **950.8** sec
Compressive extension **17.29** mm
Compressive load **.0069** kN
Compressive load **6.945** N

Test Method Report Admin



2 - Untested

Test inputs	
Thickness:	Mg A280
Width:	10.00000
Axis height:	10.00000 mm
Axis 1:	25.00000 mm
	0.10000 mm/min

- Start
- Return
- Reset
- Finish
- Save
- Save As
- Print

Security off Live machine Compression Sample A280_2* Method: hak_Praetika_340221 Report: Report - vrstedy plus dva gra...
37A260_2k_comp - In... Pralika
Dělník: ...

3:38 PM

Use this computer (DELL) for the tests only!!!
Do not install new SW. Do not access the Internet.

Reset Gauge Length Balance Load

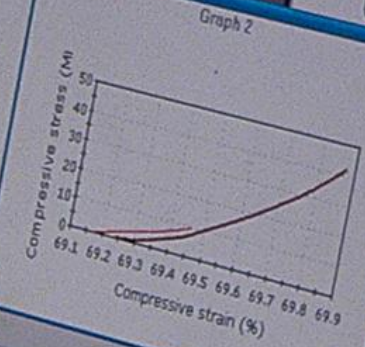
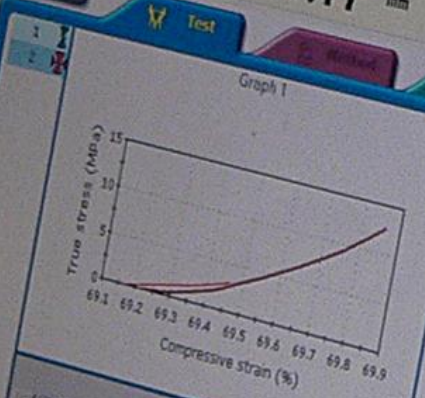
AZ90_3h_comp* - Instron Blahhll

Time
96.15 sec

Compressive extension
17.47 mm

Compressive load
4.226 kN

Compressive load
4226 N



2 - Testing

Test Inputs

Specimen label:	Prj AZ90
Thickness:	40.00000
Width:	10.00000 mm
Gauge length:	25.00000 mm
Rate 1:	0.10000 mm/min

Security off

Live machine Compression Sample: AZ90_3* Method: tlak_Praška_160721 Report: Report - vysledky plus dva gra...
Start AZ90_3h_comp* - In... Praska (2) Zve Redu dca s v...



