

Holographic CFT phase transitions and criticality for charged AdS black holes

Wan Cong,^a David Kubizňák,^{c,b,d} Robert B. Mann^{b,c} and Manus R. Visser^e

^aUniversity of Vienna, Faculty of Physics,
Vienna, Austria

^bDepartment of Physics and Astronomy, University of Waterloo,
Waterloo, Ontario, N2L 3G1, Canada

^cPerimeter Institute for Theoretical Physics,
Waterloo, Ontario, N2L 2Y5, Canada

^dInstitute of Theoretical Physics, Faculty of Mathematics and Physics, Charles University,
Prague, V Holešovičkách 2, 180 00 Prague 8, Czech Republic

^eDepartment of Theoretical Physics, University of Geneva,
24 quai Ernest-Ansermet, 1211 Genève 4, Switzerland

E-mail: wan.cong@univie.ac.at, dkubiznak@perimeterinstitute.ca,
rbmann@uwaterloo.ca, manus.visser@unige.ch

ABSTRACT: We study the holographic dual of the extended thermodynamics of spherically symmetric, charged AdS black holes in the context of the AdS/CFT correspondence. The gravitational thermodynamics of AdS black holes can be extended by allowing for variations of the cosmological constant and Newton's constant. In the dual CFT this corresponds to including the central charge C and its chemical potential μ as a new pair of conjugate thermodynamic variables, in addition to the standard pairs: temperature vs. entropy (T, S) , electric potential vs. charge $(\tilde{\Phi}, \tilde{Q})$ and field theory pressure vs. volume (p, \mathcal{V}) . For the (grand) canonical ensembles at fixed $(\tilde{Q}, \mathcal{V}, C)$, $(\tilde{\Phi}, \mathcal{V}, C)$ and $(\tilde{Q}, \mathcal{V}, \mu)$, based on the holographic dictionary, we argue the CFT description of charged AdS black holes contains either critical phenomena or interesting phase behaviour. In the fixed $(\tilde{Q}, \mathcal{V}, \mu)$ we find a new zeroth-order phase transition between a high- and low-entropy phase at some μ -dependent temperature. Finally, we point out there is no critical behaviour in the fixed p ensembles, i.e. there is no $p - \mathcal{V}$ criticality, and hence the CFT state dual to a classical charged black hole cannot be a Van der Waals fluid. Whether or not this phase structure is supported by CFT computations remains an interesting open question.

KEYWORDS: AdS-CFT Correspondence, Black Holes

ARXIV EPRINT: [2112.14848](https://arxiv.org/abs/2112.14848)

Contents

1	Introduction	1
2	Holographic thermodynamics of charged AdS black holes	5
2.1	Extended thermodynamics of charged AdS black holes	5
2.2	CFT thermodynamics with a chemical potential for the central charge	7
3	Thermodynamic ensembles in the CFT	11
3.1	Ensemble at fixed $(\tilde{Q}, \mathcal{V}, C)$	11
3.2	Ensemble at fixed $(\tilde{\Phi}, \mathcal{V}, C)$	14
3.3	Ensemble at fixed $(\tilde{Q}, \mathcal{V}, \mu)$	16
3.4	Other ensembles	19
4	CFT criticality and thermodynamic stability	20
4.1	Critical points and comparison with Van der Waals fluid	20
4.2	Critical exponents for fixed $(\tilde{Q}, \mathcal{V}, C)$ ensemble	23
4.2.1	Criticality in $C - \mu$ plane	23
4.2.2	Criticality in $\tilde{Q} - \tilde{\Phi}$ plane	26
4.3	Heat capacities and thermal stability	28
5	Discussion	29

1 Introduction

Black holes, nature’s perfect absorbers, are generally believed to behave as perfect black bodies once quantum effects are taken into account [1]. The temperature of a black hole depends on its mass, charge, and angular momentum, as well as other parameters pertinent to the physical setup. In Einstein gravity, the conjugate thermodynamic entropy is proportional to the horizon area A , in notable contrast to an ordinary fluid system, whose entropy is proportional to its volume. To be specific, the Hawking temperature and Bekenstein-Hawking entropy of black holes are given by (setting $\hbar = c = k_B = 1$) [1, 2]

$$T = \frac{\kappa}{2\pi}, \quad S = \frac{A}{4G_N}, \tag{1.1}$$

where κ is the surface gravity of the black hole and G_N is the gravitational Newton constant. These features indicate that black hole thermodynamics is crucially important in providing clues about the nature of quantum gravity.

The thermodynamics of black holes is considerably enriched for asymptotically Anti-de Sitter (AdS) black holes, which have been argued to be equivalent to thermal states in the

dual conformal field theory (CFT) via the AdS/CFT correspondence [3]. Asymptotically AdS black holes can be in thermal equilibrium with their Hawking radiation and have been shown to exhibit a plethora of interesting phase behaviour, including a first-order transition to radiation [4] corresponding to confinement/deconfinement of the dual quark gluon plasma [5], Van der Waals type phase transitions for charged AdS black holes [6–9], polymer transitions [10], reentrant phase transitions [11, 12], triple points [13, 14], and superfluid transitions [15].

The enriched phase behaviour for AdS black holes is due to the presence of a negative cosmological constant Λ . In fact, some of the new phase transitions arise by treating the cosmological constant as an additional thermodynamic variable for black holes [16]. Recently, Newton’s constant G_N has also been added to the *extended thermodynamic phase space* as a parameter that can be varied [17–22], since it is a coupling constant that can vary in the space of gravitational theories and, in particular, it varies along the renormalization group flow if quantum corrections are included. Moreover, as we will see below, Newton’s constant can be useful as a “bookkeeping device” in finding the correct thermodynamic interpretation of the extended first law of black holes. For Einstein-Maxwell theory with a negative cosmological constant, the *extended first law* of charged AdS black holes in $d + 1$ dimensions, including variations of Λ and G_N , and the *generalised Smarr relation* read, respectively, [16, 21]

$$dM = \frac{\kappa}{8\pi G_N} dA + \Phi dQ + \frac{\Theta}{8\pi G_N} d\Lambda - (M - \Phi Q) \frac{dG_N}{G_N}, \quad (1.2)$$

$$M = \frac{d-1}{d-2} \frac{\kappa A}{8\pi G_N} + \Phi Q - \frac{1}{d-2} \frac{\Theta \Lambda}{4\pi G_N}. \quad (1.3)$$

Here, M is the mass of the black hole, Q is the electric charge and its conjugate quantity Φ is the electric potential. Moreover, Θ is the quantity conjugate to the cosmological constant, which can be defined in a geometric way in terms of surface integrals of the Killing potential [16] or in terms of the proper volume weighted locally by the norm of the Killing vector [23].

The standard thermodynamic interpretation of the negative cosmological constant Λ is in terms of a positive *bulk pressure* [16, 24–27]

$$P = -\frac{\Lambda}{8\pi G_N}, \quad \text{with} \quad \Lambda = -\frac{d(d-1)}{2L^2}, \quad (1.4)$$

where L is the AdS curvature radius. Assuming Newton’s constant is held fixed, the $\Theta d\Lambda/8\pi G_N$ term in the extended first law becomes equal to a VdP term, if we identify $V = -\Theta$ as the *thermodynamic volume*. The respective extended first law (1.2) and the generalised Smarr relation (1.3) can then be written as

$$dM = TdS + \Phi dQ + VdP, \quad (1.5)$$

$$M = \frac{d-1}{d-2} TS + \Phi Q - \frac{2}{d-2} PV. \quad (1.6)$$

However, the bulk pressure interpretation above has some peculiar features. First, the mass M of the black hole is identified with the thermodynamic enthalpy H (rather than internal

energy) in this extended thermodynamic phase space, since the enthalpy satisfies the first law $dH = TdS + VdP$. This seemingly stands in contrast to the standard identification of the ADM mass with the boundary Hamiltonian generating time translations at asymptotic infinity, which plays the role of an (asymptotic) energy. Second, if we allow for variations of Newton’s constant (as a bookkeeping device) then the Λ and G_N variations in the extended black hole first law cannot be combined into a single term $d(\Lambda/G_N)$. Specifically, the extended first law (1.2) can be rewritten as

$$dM = \frac{\kappa}{8\pi} d\left(\frac{A}{G_N}\right) + \Phi dQ + \frac{\Theta}{8\pi} d\left(\frac{\Lambda}{G_N}\right) - \left(M - \frac{\kappa A}{8\pi G_N} - \Phi Q - \frac{\Theta \Lambda}{8\pi G_N}\right) \frac{dG_N}{G_N}. \quad (1.7)$$

The first term on the right can now be identified with the TdS term in the thermodynamic first law, and the third term can be interpreted as a VdP term. But the final term cannot be put to zero by employing the Smarr relation and it is not clear what its thermodynamic interpretation is. So it seems that either (P, V) are not the right thermodynamic variables for expressing the extended first law, or one has to find another meaningful pair of thermodynamic variables in addition to (P, V) that accounts for the final term in (1.7).¹

Moreover, a problematic issue of the bulk pressure interpretation is that it does not seem compatible with holography [18, 19, 28–32]. In AdS/CFT the thermodynamics of AdS black holes can be equivalently described by the dual CFT at finite temperature. Therefore, one would expect that the thermodynamic variables of AdS black holes can be mapped to standard thermodynamic variables in the CFT. However, the bulk pressure P is not dual to the pressure p of the dual field theory, and the thermodynamic volume V of black holes is not related to the spatial volume \mathcal{V} on which the CFT is formulated [28]. Further, the generalised Smarr relation should be dual to the thermodynamic Euler relation in the field theory. But the latter relation does not contain any dimension dependent factors whereas the former does, so this raises the question as to how the Smarr relation (1.3) can be mapped to the CFT Euler relation.

These problems can be resolved by choosing new thermodynamic variables, which at the same time give a correct CFT interpretation of extended black hole thermodynamics. Several authors [16, 18, 19, 28, 29] have argued that varying the cosmological constant is dual to varying the *central charge* C or the number of colors N in the dual gauge theory. In holographic CFTs dual to Einstein gravity the central charge is related to both the AdS radius and Newton’s constant, $C \sim L^{d-1}/G_N$; hence variations of C in the CFT could in principle lead to variations of both Λ and G_N in the gravity theory. Therefore, the central charge C and its conjugate *chemical potential* μ (also called “color susceptibility” [19]) play an essential role in the holographic dual of extended black hole thermodynamics.

Recently, in [21] this central charge interpretation has been made more precise by providing an exact match between the extended CFT thermodynamics and the extended gravitational thermodynamics. In particular, the extended first law of AdS black holes (1.2) was shown to be dual to the extended CFT first law, where both the field theory pressure

¹For instance, in [22] dG_N/G_N in (1.7) was replaced by $-\frac{2}{d+1} \frac{dC}{C} - \frac{d-1}{d+1} \frac{dP}{P}$, with $P \sim -\Lambda/G_N$ being the bulk pressure (1.4) and $C \sim L^{d-1}/G_N$ the boundary central charge (2.15). This yields a “mixed” first law with a new thermodynamic volume and a chemical potential different from the one in [21].

and the central charge are allowed to vary. By inserting $d\Lambda/\Lambda = -2dL/L$ and using the Smarr relation (1.3) to express Θ in terms of the other variables, one can write the first law (1.2) as

$$dM = \frac{\kappa}{2\pi} d\left(\frac{A}{4G_N}\right) + \frac{\Phi}{L} d(QL) - \frac{M}{d-1} \frac{dL^{d-1}}{L^{d-1}} + \left(M - \frac{\kappa A}{8\pi G_N} - \Phi Q\right) \frac{d(L^{d-1}/G_N)}{L^{d-1}/G_N}. \quad (1.8)$$

This is a different rewriting of the first law compared to (1.7) in terms of the central charge $C \sim L^{d-1}/G_N$ rather than the bulk pressure $P \sim -\Lambda/G_N$. The advantage of this new rewriting is that all the terms in the first law immediately have a thermodynamic interpretation in the dual CFT, and there are no left-over terms like the dG_N/G_N term in (1.7), which do not have a direct thermal interpretation. In particular, if we insert the standard holographic dictionary for CFTs living on geometries whose curvature radius coincides with the AdS radius L [19, 21],

$$E = M, \quad \tilde{\Phi} = \Phi/L, \quad \tilde{Q} = QL, \quad \mathcal{V} \sim L^{d-1}, \quad C \sim L^{d-1}/G_N, \quad (1.9)$$

and use (1.1) for the temperature and entropy, then (1.8) turns into the *extended CFT first law*

$$dE = TdS + \tilde{\Phi}d\tilde{Q} - pd\mathcal{V} + \mu dC, \quad \text{with} \quad (1.10)$$

$$\mu = \frac{1}{C}(E - TS - \tilde{\Phi}\tilde{Q}), \quad \text{and} \quad p = \frac{1}{d-1} \frac{E}{\mathcal{V}}. \quad (1.11)$$

Note in (1.9) that both the CFT electric charge and its corresponding conjugate potential are rescaled by the AdS radius [6]. In (1.11) the formula for the chemical potential μ is the *Euler equation* in large- N gauge theories in the deconfined phase; it does not contain dimension dependent factors, as should be the case. This Euler equation can be shown to be dual to the generalised Smarr relation (1.3) [19, 21]. Further, the field theory pressure p in (1.11) satisfies the CFT equation of state in d spacetime dimensions.

As explained in [21], the holographic dictionary (1.9) can be extended to CFTs for which the curvature radius R is unequal to the AdS length L , which we will review in section 2. In this case there is still a precise match between the CFT first law (1.10) and the bulk extended first law (1.2). The advantage of this generalised dictionary is that the boundary volume \mathcal{V} and the central charge C are now completely independent, since the volume depends on R and the central charge on L . However, one can also set $R = L$ and then all the results on phase transitions and all the plots presented in the paper remain the same.

The purpose of the present paper is to investigate the holographic dual of extended thermodynamics of charged AdS black holes in more detail. For the three pairs of conjugate quantities $(\tilde{\Phi}, \tilde{Q})$, (p, \mathcal{V}) and (μ, C) , there are in total eight possible thermodynamic (grand) canonical ensembles in the CFT. In section 3 we find that three of these ensembles exhibit interesting phase behaviour or critical phenomena, to wit the ensembles at fixed $(\tilde{Q}, \mathcal{V}, C)$, $(\tilde{\Phi}, \mathcal{V}, C)$ and $(\tilde{Q}, \mathcal{V}, \mu)$. We plot the appropriate free energies in these ensembles as a function of the temperature and analyse the relevant phase diagrams. Further, in

section 4 we study the critical behaviour and thermodynamic stability in detail, and show that the critical exponents of the critical points in the $\tilde{Q} - \tilde{\Phi}$ and $C - \mu$ plane agree with those of mean field theory. Finally, in section 5 we compare our work with other literature on the holographic dual of extended black hole thermodynamics.

2 Holographic thermodynamics of charged AdS black holes

The AdS/CFT correspondence relates the thermodynamics of AdS black holes to the thermodynamics of the dual CFT [5]. In this section we recap the holographic dictionary for the *extended* thermodynamics of charged AdS black holes, presented in [21]. We keep the number of dimensions general in most of the paper, but all plots are made for $d = 4$, i.e. the AdS₅/CFT₄ correspondence.

2.1 Extended thermodynamics of charged AdS black holes

We begin by briefly revisiting the spherically symmetric, charged black holes in asymptotically AdS spacetime [6, 7]. This is a solution to Einstein–Maxwell theory with a negative cosmological constant Λ , whose action in $d + 1$ spacetime dimensions reads

$$I = \frac{1}{16\pi G_N} \int d^{d+1}x \sqrt{-g} (R - 2\Lambda - F^2) \tag{2.1}$$

where $F = dA$ is the electromagnetic field strength, Λ is given in (1.4), where we note that the normalisation $1/16\pi G_N$ of the matter part of the action is not standard, since it involves Newton’s constant. The metric for a Reissner–Nordström AdS black hole in static coordinates is

$$ds^2 = -f(r)dt^2 + \frac{dr^2}{f(r)} + r^2 d\Omega_{d-1}^2, \tag{2.2}$$

where $d\Omega_{d-1}^2$ is the metric on the round unit $d - 1$ sphere, and the function $f(r)$ is given by

$$f(r) = 1 + \frac{r^2}{L^2} - \frac{m}{r^{d-2}} + \frac{q^2}{r^{2d-4}}. \tag{2.3}$$

Here, m is the mass parameter of the black hole, which is related to the ADM mass by

$$M = \frac{(d-1)\Omega_{d-1}}{16\pi G_N} m. \tag{2.4}$$

Further, q is the charge parameter, which is related to the electric charge via

$$Q = \frac{(d-1)\Omega_{d-1}}{8\pi G_N} \alpha q, \quad \text{with} \quad \alpha = \sqrt{\frac{2(d-2)}{d-1}}. \tag{2.5}$$

The associated gauge potential is

$$A = \left(-\frac{1}{\alpha} \frac{q}{r^{d-2}} + \Phi \right) dt, \tag{2.6}$$

where Φ is a constant that plays the role of the electric potential. Charged black holes have inner horizons and an outer event horizon. We are only concerned in this paper with the

outer horizon at $r = r_h$, which is the largest real positive root of $f(r)$. From the condition $f(r_h) = 0$ we can solve for the mass parameter in terms of the horizon radius, the AdS radius and the charge parameter

$$m = r_h^{d-2} \left(1 + \frac{r_h^2}{L^2} + \frac{q^2}{r_h^{2d-4}} \right). \tag{2.7}$$

We fix the electric potential such that $A_t(r_h) = 0$, i.e.

$$\Phi = \frac{1}{\alpha} \frac{q}{r_h^{d-2}}. \tag{2.8}$$

With this choice Φ represents the potential difference between the outer horizon and infinity. The black hole parameters are related to each other by the generalised Smarr formula (1.3) [16],

$$M = \frac{d-1}{d-2} \frac{\kappa A}{8\pi G_N} + \Phi Q - \frac{1}{d-2} \frac{\Theta \Lambda}{4\pi G_N}. \tag{2.9}$$

Here, $\Theta = -V$ is the quantity conjugate to the cosmological constant Λ , which can be defined as the background subtracted Killing volume [23]

$$\Theta \equiv \int_{\Sigma_{\text{bh}}} |\xi| dV - \int_{\Sigma_{\text{AdS}}} |\xi| dV, \tag{2.10}$$

where $|\xi| = \sqrt{-\xi \cdot \xi}$ is the norm of the time translation Killing vector ξ , which generates the event horizon. We have subtracted the same integral in pure AdS to cancel the divergence at infinity. Note that the domain of integration Σ_{bh} extends from the horizon to infinity, whereas the domain of integration Σ_{AdS} in the AdS background extends across the entire spacetime. Moreover, through Stokes' theorem this definition can be shown to be equivalent to the original definition of Θ in terms of surface integrals of the Killing potential [16] (see footnote 9 in [23]). In static coordinates, setting $\xi = \partial_t$, the background subtracted Killing volume is equal to minus the Euclidean volume excluded by the black hole, i.e. $\Theta = -\frac{1}{d} \Omega_{d-1} r_h^d$ [16, 26]. Instead of using the background subtraction method one can also employ the counterterm subtraction method to regulate the divergence in the Killing volume [33].

Further, by using the metric (2.2) and by computing the surface gravity defined with respect to the time translation Killing vector $\xi = \partial_t$, we obtain from (1.1) the Hawking temperature and the Bekenstein–Hawking entropy

$$T = \frac{d-2}{4\pi r_h} \left(1 + \frac{d}{d-2} \frac{r_h^2}{L^2} - \frac{q^2}{r_h^{2d-4}} \right), \quad S = \frac{\Omega_{d-1} r_h^{d-1}}{4G_N}. \tag{2.11}$$

The generalised Smarr formula and the extended first law of AdS black hole mechanics are related by a scaling argument [16, 34, 35]. The black hole parameters scale with the AdS radius as $M \sim L^{d-2}$, $A \sim L^{d-1}$, $Q \sim L^{d-2}$ and $\Lambda \sim L^{-2}$, and with Newton's constant as $M, Q \sim G_N^{-1}$. It can be shown that the gravitational first law for charged AdS black holes, extended to include variations of the theory parameters G_N and Λ , is given by

$$dM = \frac{\kappa}{8\pi G_N} dA + \Phi dQ + \frac{\Theta}{8\pi G_N} d\Lambda - (M - \Phi Q) \frac{dG_N}{G_N}. \tag{2.12}$$

As mentioned in the introduction, the addition of the variation of the cosmological constant in the first law is well studied in the literature (see [36] for a review). The variation of Newton’s constant was considered before in the context of the first law of holographic entanglement entropy in [18, 37, 38] and for the extended first law of AdS black holes in [17, 20–22].

2.2 CFT thermodynamics with a chemical potential for the central charge

In [19, 21, 39] it was shown that the generalised Smarr formula (2.9) for AdS black holes is dual to an Euler equation in large- N field theories, which includes a μC term but not a $p\mathcal{V}$ term. For charged black holes the dual Euler equation takes the following form:

$$E = TS + \tilde{\Phi}\tilde{Q} + \mu C, \tag{2.13}$$

where μ is the chemical potential associated with the central charge C , and $\tilde{\Phi}$ and \tilde{Q} are the CFT electric potential and charge. Moreover, in [21] the extended first law (2.12) was matched with an extended first law of thermodynamics in the CFT, which involves both a μdC term and a $pd\mathcal{V}$ term,

$$dE = TdS + \tilde{\Phi}d\tilde{Q} - pd\mathcal{V} + \mu dC, \tag{2.14}$$

where p is the field theory pressure and \mathcal{V} the spatial volume on which the CFT resides. In this subsection we will summarize how this matching works between the boundary and bulk thermodynamic first laws, for the case where the boundary curvature radius R is unrelated to the bulk curvature radius L . We refer to [19, 21, 39] for a derivation of the generalised Smarr formula for AdS black holes from the Euler equation in the dual CFT.

Let us begin by explaining the holographic dictionary that is necessary for the match. First, in AdS/CFT the central charge of the CFT is related to the AdS radius and the gravitational coupling constants in the bulk theory. For Einstein gravity this dictionary reads

$$C = \frac{\Omega_{d-1}L^{d-1}}{16\pi G_N}. \tag{2.15}$$

In conformal field theory there are several candidates for the central charge in general dimensions. The standard central charges parametrizing the trace anomaly $\langle T^\mu{}_\mu \rangle$ in a curved background exist only in even dimensions. We normalized the central charge in (2.15) such that it agrees with the coefficient A of the Euler density in the trace anomaly. In $d = 2$ our central charge is related to the usual central charge by $C = c/12$; inserting this into (2.15) yields the well-known Brown–Henneaux dictionary $c = 3L/2G_N$ in AdS₃/CFT₂ [40]. Two other candidates for a generalised central charge, denoted as C_T and a_d^* , are also defined in odd dimensions [41, 42]. The former central charge C_T is defined as the overall normalization of the two-point function of the CFT stress tensor [43]. The latter central charge a_d^* is the universal coefficient in the vacuum entanglement entropy for ball-shaped regions. Now, crucially for CFTs dual to Einstein gravity both C_T and a_d^* scale as L^{d-1}/G_N times a constant in the bulk. The precise normalization of the central charge is ambiguous, but it can be chosen such that these central charges are equal, $C_T = a_d^*$, and both satisfy the

holographic dictionary (2.15) [44]. Later on, we will see the normalization of the central charge is irrelevant for our purpose of expressing the black hole first law in terms of CFT quantities, since only the combination dC/C appears in the first law. Therefore, only the scaling of the central charge with L and G_N , i.e. $C \sim L^{d-1}/G_N$, is important.

Another parameter of the CFT that appears in the thermodynamic first law, is the spatial volume \mathcal{V} of the geometry on which the CFT is formulated. In the literature (see e.g. [19, 32]) the CFT is often put on a sphere of AdS radius L , such that the volume is $\mathcal{V} = \Omega_{d-1}L^{d-1}$. However, we want to clearly distinguish between the central charge C and the spatial volume \mathcal{V} of the CFT. Therefore, we choose the boundary curvature radius R to be different from the bulk curvature radius L , and let the spatial volume be

$$\mathcal{V} = \Omega_{d-1}R^{d-1}. \quad (2.16)$$

Note this is the volume of a $(d-1)$ -dimensional sphere of radius R in the CFT boundary geometry $\mathbb{R} \times S^{d-1}$, which corresponds to an “area” in the $(d+1)$ -dimensional AdS bulk geometry. Technically, this can be realized by choosing a particular conformal frame for the CFT. In AdS/CFT the dual field theory lives on the conformal boundary of the asymptotically AdS spacetime. More precisely, according to the Gubser–Klebanov–Polyakov–Witten (GKPW) prescription [45, 46] the CFT metric g_{CFT} is identified with the AdS metric g_{AdS} evaluated on the asymptotic boundary up to a Weyl rescaling

$$g_{\text{CFT}} = \lim_{r \rightarrow \infty} (\lambda^2(x)g_{\text{AdS}}), \quad (2.17)$$

where $r \rightarrow \infty$ corresponds to spatial infinity and $\lambda(x)$ is an arbitrary Weyl factor. As $r \rightarrow \infty$ the line element of asymptotically AdS spacetime approaches

$$ds^2 = -\frac{r^2}{L^2}dt^2 + \frac{L^2}{r^2}dr^2 + r^2d\Omega_{d-1}^2. \quad (2.18)$$

For the standard choice of the Weyl factor $\lambda = L/r$ the line element of the boundary CFT is $ds^2 = -dt^2 + L^2d\Omega_{d-2}^2$. In this case the bulk curvature radius L coincides with the boundary curvature radius. However we shall instead take the Weyl factor to be $\lambda = R/r$ such that the CFT resides on a sphere of constant radius R , and the line element of the CFT becomes

$$ds^2 = -\frac{R^2}{L^2}dt^2 + R^2d\Omega_{d-1}^2. \quad (2.19)$$

The spatial volume of the boundary sphere is now indeed given by (2.16). For this choice of CFT metric the holographic dictionary for the entropy S , energy E , temperature T , electric potential $\tilde{\Phi}$ and electric charge \tilde{Q} in the dual field theory is [6, 19, 21]

$$S = \frac{A}{4G_N}, \quad E = M\frac{L}{R}, \quad T = \frac{\kappa}{2\pi}\frac{L}{R}, \quad \tilde{\Phi} = \frac{\Phi}{L}\frac{L}{R}, \quad \tilde{Q} = QL. \quad (2.20)$$

Note that the factor L/R arises in the dictionary for the energy, temperature and electric potential, since the bulk Schwarzschild time t differs from the boundary CFT time in (2.19) by a factor R/L [47]. Hence, the dictionary for the energy, temperature and potential differs by a factor L/R from the holographic dictionary in (1.9). Further, our dictionary here for

the charge and potential differs by a factor $\sqrt{G_N}$ from that in our previous work [22], where we used $\tilde{Q} = Q_b L / \sqrt{G_N}$ and $\tilde{\Phi} = \Phi_b \sqrt{G_N} / L$ (note we assumed $R = L$). This is because the convention in [22] for the bulk charge and potential is different, $Q_b = \sqrt{G_N} Q$ and $\Phi_b = \Phi / \sqrt{G_N}$, compared to the expressions for Q and Φ in (2.5) and (2.8), respectively. The difference can be traced back to a different convention for the bulk action: in [6, 19, 21] the Einstein–Maxwell action was defined as (2.1), whereas in [22] the bulk action took the standard form $I = \frac{1}{16\pi G_N} \int d^{d+1}x \sqrt{-g} (R - 2\Lambda - G_N F^2)$. The latter convention leads to another coefficient in the dG_N term in the bulk first law (2.12), since $\Phi dQ + \tilde{\Phi} Q dG_N / G_N = \Phi_b dQ_b + \frac{1}{2} \Phi_b Q_b dG_N / G_N$.

Furthermore, in the holographic dictionary above we assumed the energy of the vacuum state vanishes. However, the vacuum energy for a CFT on a sphere is in fact finite when d is even due to the Casimir effect, and it can be computed in AdS/CFT through the counterterm subtraction method a.k.a. holographic renormalization [48, 49]. The correct dictionary for the renormalized energy that follows from this method is given by $E = (M + E_0)L/R$, where the vacuum energy $E_0 \sim C$ is proportional to the central charge. For the purpose of this paper we can safely ignore the Casimir energy, since it is essentially irrelevant for the (holographic) thermodynamics, as pointed out in footnote 5 of [7]. This choice of setting the vacuum energy to zero is also in agreement with other definitions of the asymptotic energy in asymptotically AdS spacetimes [50–53], which are not based on the counterterm subtraction method. Nevertheless, if it exists, the Casimir energy does affect the Killing volume Θ and the chemical potential μ ; see appendix E in [21] for a renormalized version of the Euler equation.

A crucial step in matching the bulk and boundary first laws is to replace Θ in the extended first law (2.12) using the generalised Smarr formula (2.9), and to insert $d\Lambda/\Lambda = -2dL/L$. After a reorganization we can express the extended first law in terms of the boundary thermodynamic quantities [21]

$$d\left(\frac{M}{R}\right) = \frac{\kappa}{2\pi} \frac{L}{R} d\left(\frac{A}{4G_N}\right) + \frac{\Phi}{R} d(QL) - \frac{M}{d-1} \frac{L}{R} \frac{dR^{d-1}}{R^{d-1}} + \left(\frac{M}{R} - \frac{\kappa A}{8\pi G_N} \frac{L}{R} - \frac{\Phi}{R} QL\right) \frac{d(L^{d-1}/G_N)}{L^{d-1}/G_N}. \tag{2.21}$$

The holographic dictionary (2.15), (2.16) and (2.20) then implies that the extended first law of charged AdS black holes is dual to the following thermodynamic first law in the CFT

$$dE = TdS + \tilde{\Phi}d\tilde{Q} - pd\mathcal{V} + \mu dC. \tag{2.22}$$

By comparing the bulk and boundary first laws, (2.21) and (2.22) respectively, we find the CFT pressure and the chemical potential associated with the central charge are fixed to be

$$p = \frac{1}{d-1} \frac{E}{\mathcal{V}}, \quad \mu = \frac{1}{C} (E - TS - \tilde{\Phi}\tilde{Q}). \tag{2.23}$$

The first equation is the CFT equation of state in d spacetime dimensions, which is a consequence of the scale invariance of the CFT. The second equation is the Euler relation (2.13)

for large- N gauge theories with a conserved charge \tilde{Q} , which is equivalent to the fact that the grand canonical free energy is proportional to C (or N^2) in the deconfined phase of large- N theories, i.e. $W \equiv E - TS - \tilde{\Phi}\tilde{Q} = \mu C$ [19]. Notably, in contrast to the generalised Smarr relation (2.9), the Euler equation does not contain any dimension dependent factors, just like the Euler equation in standard thermodynamics. Moreover, even though the $-pd\mathcal{V}$ term features in the CFT first law, a $-p\mathcal{V}$ term is absent in the large- N Euler equation. This peculiarity arises because the volume does not generically scale with the central charge C , like the other thermodynamic quantities in the CFT do, i.e. $E, S, \tilde{Q} \sim C$. However, in the infinite-volume or infinite-temperature limit $TR \rightarrow \infty$ the volume does scale with the central charge, since in that case we have $p\mathcal{V} = -\mu C$, and the Euler equation reduces to the standard one in flat space $E = TS + \tilde{\Phi}\tilde{Q} - p\mathcal{V}$ (see appendix C in [21]).

The additional term μdC in the extended CFT first law (2.22) requires some further discussion. In $SU(N)$ gauge theories with conformal symmetry like $\mathcal{N} = 4$ supersymmetric Yang-Mills theory the central charge is associated with the rank of the gauge group, $C \sim N^2$. Changing the rank of the gauge group is tantamount to changing the original theory. Variations of the rank of the gauge group can thus be viewed as moving within the space of theories and changing the number of degrees of freedom N^2 . We are investigating in this paper how various physical quantities change as the central charge varies. However, since N is an integer it can not be varied in a continuous way. Nevertheless, in the large- N limit, which is relevant for holography, we still have $\Delta N/N \ll 1$, and hence $dC/C \ll 1$. Since $\mu \sim 1/C$ the combination $\Delta C/C$ appears precisely in the first law, and therefore the μdC term in the first law only makes sense for large- N field theories.²

Finally, we give explicit expressions for the thermodynamic variables of CFT thermal states dual to charged AdS black holes. Following [32], we find it convenient to introduce the dimensionless parameters

$$x \equiv \frac{r_h}{L}, \quad y \equiv \frac{q}{L^{d-2}}. \quad (2.24)$$

The gravitational entropy (2.11), electric charge (2.5) and potential (2.8) of AdS black holes can be mapped to CFT variables using the holographic dictionary (2.20):

$$S = 4\pi C x^{d-1}, \quad \tilde{Q} = 2\alpha(d-1)C y, \quad \tilde{\Phi} = \frac{1}{\alpha R} \frac{y}{x^{d-2}}, \quad (2.25)$$

where we recall R is the boundary curvature radius, and C is the CFT central charge (2.15). Further, the ADM energy (2.4) and the Hawking temperature (2.11) can also be related to the CFT energy and temperature, respectively,

$$E = \frac{d-1}{R} C x^{d-2} \left(1 + x^2 + \frac{y^2}{x^{2d-4}} \right), \quad T = \frac{d-2}{4\pi R} \frac{1}{x} \left(1 + \frac{d}{d-2} x^2 - \frac{y^2}{x^{2d-4}} \right), \quad (2.26)$$

where (2.25) can be used to express x and y in terms of the CFT variables $S, \tilde{Q}, \tilde{\Phi}, C$ and R . Moreover, the chemical potential (2.23) can be expressed in terms of x, y and R as

$$\mu = \frac{x^{d-2}}{R} \left(1 - x^2 - \frac{y^2}{x^{2d-4}} \right). \quad (2.27)$$

²We thank an anonymous referee for pointing this out.

We point out that the $1/R$ dependence in equations (2.25)–(2.27) is fixed by the scale invariance of the CFT; the scale invariant combinations are $\tilde{\Phi}R$, ER , TR and μR .

3 Thermodynamic ensembles in the CFT

Using the holographic dictionary of the previous section we want to study different (grand) canonical thermodynamic ensembles in the CFT. Besides the pair (T, S) there are three pairs of conjugate thermodynamic variables in the CFT description of charged AdS black holes, namely $(\tilde{\Phi}, \tilde{Q})$, (p, \mathcal{V}) and (μ, C) . For the study of thermal behavior this yields $2^3 = 8$ (grand) canonical ensembles.

Five of these ensembles exhibit no interesting phase behaviour. The relevant grand canonical potentials or free energies for these ensembles are

$$\begin{aligned}
 \text{fixed } (\tilde{Q}, p, C) : & \quad F_1 \equiv E - TS + p\mathcal{V} = \tilde{\Phi}\tilde{Q} + \mu C + p\mathcal{V}, \\
 \text{fixed } (\tilde{Q}, p, \mu) : & \quad F_2 \equiv E - TS + p\mathcal{V} - \mu C = \tilde{\Phi}\tilde{Q} + p\mathcal{V}, \\
 \text{fixed } (\tilde{\Phi}, p, \mu) : & \quad F_3 \equiv E - TS - \tilde{\Phi}\tilde{Q} + p\mathcal{V} - \mu C = p\mathcal{V}, \\
 \text{fixed } (\tilde{\Phi}, p, C) : & \quad F_4 \equiv E - TS - \tilde{\Phi}\tilde{Q} + p\mathcal{V} = \mu C + p\mathcal{V}, \\
 \text{fixed } (\tilde{\Phi}, \mathcal{V}, \mu) : & \quad F_5 \equiv E - TS - \tilde{\Phi}\tilde{Q} - \mu C = 0.
 \end{aligned} \tag{3.1}$$

We did find phase transitions or critical phenomena for the remaining three ensembles at fixed $(\tilde{Q}, \mathcal{V}, C)$, $(\tilde{\Phi}, \mathcal{V}, C)$ and $(\tilde{Q}, \mathcal{V}, \mu)$, whose free energies we denote as F , W and G , respectively,

$$\begin{aligned}
 \text{fixed } (\tilde{Q}, \mathcal{V}, C) : & \quad F \equiv E - TS = \tilde{\Phi}\tilde{Q} + \mu C, \\
 \text{fixed } (\tilde{\Phi}, \mathcal{V}, C) : & \quad W \equiv E - TS - \tilde{\Phi}\tilde{Q} = \mu C, \\
 \text{fixed } (\tilde{Q}, \mathcal{V}, \mu) : & \quad G \equiv E - TS - \mu C = \tilde{\Phi}\tilde{Q}.
 \end{aligned} \tag{3.2}$$

In the next three subsections 3.1–3.3 we will study the phase behaviour of these three ensembles by looking at how the appropriate free energies behave as functions of temperature. In the last subsection 3.4 we will briefly mention our findings in the other five ensembles.

3.1 Ensemble at fixed $(\tilde{Q}, \mathcal{V}, C)$

In the canonical ensemble we fix the electric charge \tilde{Q} , the spatial volume \mathcal{V} and the central charge C . The thermodynamic potential in this ensemble is the Helmholtz free energy

$$F \equiv E - TS = C \frac{x^{d-2}}{R} \left(1 - x^2 + (2d-3) \frac{y^2}{x^{2d-4}} \right). \tag{3.3}$$

Indeed by the CFT first law (2.22), the differential of F satisfies

$$dF = dE - TdS - SdT = -SdT + \tilde{\Phi}d\tilde{Q} - pd\mathcal{V} + \mu dC. \tag{3.4}$$

Hence, F is stationary at fixed $(T, \tilde{Q}, \mathcal{V}, C)$, and is therefore the right free energy in this case. This ensemble is equivalent to the fixed charge ensemble analysed in [6, 7], but we clarify that in the dual CFT description implicitly \mathcal{V} and C are also kept fixed.

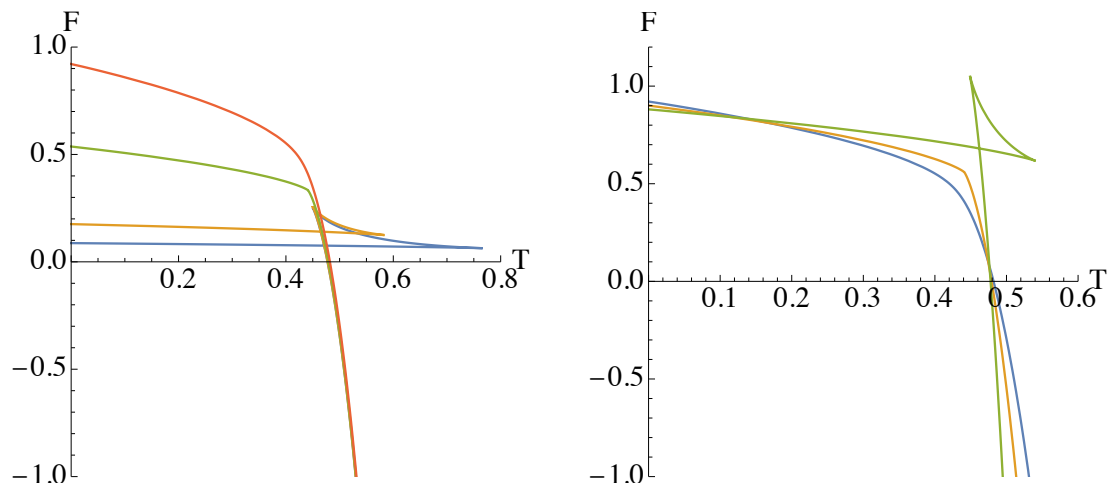


Figure 1. Free energy F vs. temperature T plot in $d = 4$ for the fixed $(\tilde{Q}, \mathcal{V}, C)$ ensemble. *Left:* we plot different values of \tilde{Q} for fixed R and C , the parameters are $R = 1$, $C = 1$ and $\tilde{Q} = 0.1, 0.2, 4/3\sqrt{5}, 1$ (blue, orange, green, red). For $Q < Q_{\text{crit}}$ (blue, orange) the free energy displays “swallowtail” behaviour and a first-order phase transition occurs between two thermodynamically stable branches. The “horizontal” branch has low entropy, while the “vertical” branch has high entropy. The intermediate branch that connects these two branches has negative heat capacity and is hence unstable. For $Q = Q_{\text{crit}}$ (green) there is a second-order phase transition, and for $Q > Q_{\text{crit}}$ (red) there are no phase transitions. *Right:* We plot different values of C for fixed \tilde{Q} and R , the parameters are $R = 1$, $\tilde{Q} = 1$ and $C = 1, 3\sqrt{5}/4, 4$ (blue, orange, green). As in the charged case, the plot exhibits different behaviours below and above the critical value, this time, a critical central charge. The swallowtail and first-order phase transitions occur for $C > C_{\text{crit}}$ (green). This transition becomes of second order at $C = C_{\text{crit}}$ (orange) and for $C < C_{\text{crit}}$ only a single phase exists, as implied by the smooth single-valued curve (blue). The two apparent triple intersections of the blue, orange and green curves is a consequence of plotting resolution; there are no triple intersections.

Let us now study how the free energy F behaves as a function of the temperature T for different fixed $(\tilde{Q}, \mathcal{V}, C)$ values. For this purpose, it is practical to consider F and T as functions of (\tilde{Q}, R, C, x) , where we note that fixing the radius R is identical to fixing the volume \mathcal{V} due to (2.16). This is done by replacing the parameter y in (2.26) and (3.3) by the electric charge and central charge, using the relation $\tilde{Q} = 2\alpha(d - 1)Cy$. We then obtain for the free energy and temperature, respectively,

$$\begin{aligned}
 F &= C \frac{x^{d-2}}{R} \left(1 - x^2 + \frac{2d - 3}{4\alpha^2(d - 1)^2 C^2} \frac{\tilde{Q}^2}{x^{2d-4}} \right), \\
 T &= \frac{d - 2}{4\pi R} \frac{1}{x} \left(1 + \frac{d}{d - 2} x^2 - \frac{2d - 3}{4\alpha^2(d - 1)^2 C^2} \frac{\tilde{Q}^2}{x^{2d-4}} \right).
 \end{aligned}
 \tag{3.5}$$

This allows us to plot $F(T)$ parametrically using x as parameter for fixed values of (\tilde{Q}, R, C) , which we depict in figure 1. The dependence on the radius R is trivially fixed by scale invariance, hence plots of $F(T)$ for different values of R are only rescalings of each other. It does matter, however, whether we plot $F(T)$ for different values of \tilde{Q} , while

keeping C fixed, or for different values of C , while keeping \tilde{Q} fixed. In both cases the free energy displays “swallowtail” behaviour connecting three different branches, but in the former case this only occurs for $Q < Q_{\text{crit}}$ and in the latter case for $C > C_{\text{crit}}$, where Q_{crit} and C_{crit} are critical values whose ratio we compute below in equation (4.3). In figure 1 the former case is shown on the left and the latter case is shown on the right. We will now discuss these two different plots in more detail.

On the left in figure 1 we show the free energy as a function of the temperature for $Q < Q_{\text{crit}}$ (blue, orange), $Q = Q_{\text{crit}}$ (green) and $Q > Q_{\text{crit}}$ (red) while keeping C and R fixed. The free energy displays a “swallowtail” shape for $\tilde{Q} < \tilde{Q}_{\text{crit}}$, a kink when $\tilde{Q} = \tilde{Q}_{\text{crit}}$, and a smooth monotonic curve for $\tilde{Q} > \tilde{Q}_{\text{crit}}$. For each of the curves, starting from the point on the curve where $T = 0$, the value of x along the curves increases as T increases. From the formula $S = 4\pi C x^{d-1}$ for the CFT entropy, we see that black holes with small $x \equiv r_h/L$ are dual to CFT thermal states with small S/C , i.e. states with *low entropy per degree of freedom*. On the swallowtail curve (e.g. blue), this low-entropy state (from here on we drop the phrase “per degree of freedom” to avoid clutter) is the only available state near $T = 0$ on this curve and thus has initially the lowest free energy F . It continues to have the lowest free energy as T increases until the self-intersection point of the curve. Beyond this point, the CFT state with *high entropy per degree of freedom*, corresponding to large x black holes, lying along the “vertical” branch of the curve, becomes the state with lowest free energy F and hence dominates the canonical ensemble. A first-order phase transition thus takes place between low- and high-entropy states at the self-intersection temperature for each value of $\tilde{Q} < \tilde{Q}_{\text{crit}}$. As we increase \tilde{Q} , the temperature at which the phase transition occurs increases while the swallowtail shrinks in size until $\tilde{Q} = \tilde{Q}_{\text{crit}}$, where it becomes just a kink in the curve. The phase transition between low- and high-entropy states becomes second order at this $(\tilde{Q}_{\text{crit}}, T_{\text{crit}})$ critical point, which depends on the value of C . This $F - T$ behaviour of the CFT is commensurate with the canonical ensemble for AdS black holes at fixed charge [6].

However unlike [6], we also consider variations of C while keeping \tilde{Q} fixed. On the right in figure 1 we show the plots of $F(T)$ for three representative values of C while keeping \tilde{Q} and R fixed: $C < C_{\text{crit}}$ (blue), $C = C_{\text{crit}}$ (orange) and $C > C_{\text{crit}}$ (green). Qualitatively, this plot conveys a phase behaviour similar to that on the left figure. That is, the CFT displays a first-order phase transition between states with low- and high-entropy per degree of freedom for $C > C_{\text{crit}}$, a second-order phase transition at C_{crit} , and a single phase for $C < C_{\text{crit}}$. As we decrease C , the temperature at which the first-order phase transition occurs decreases until the critical central charge is reached, where the phase transition becomes second order. Comparing the left and right plots in figure 1, it is noteworthy that the first-order phase transitions occur for large central charge $C > C_{\text{crit}}$ on the right, but for small electric charge $\tilde{Q} < Q_{\text{crit}}$ on the left. Moreover, on the right the value of the free energy at which the first-order phase transition occurs decreases as C decreases; in contrast, on the left the free energy of the first-order phase transition increases as \tilde{Q} decreases. These results on central charge criticality are consistent with recent findings from a bulk perspective [22].

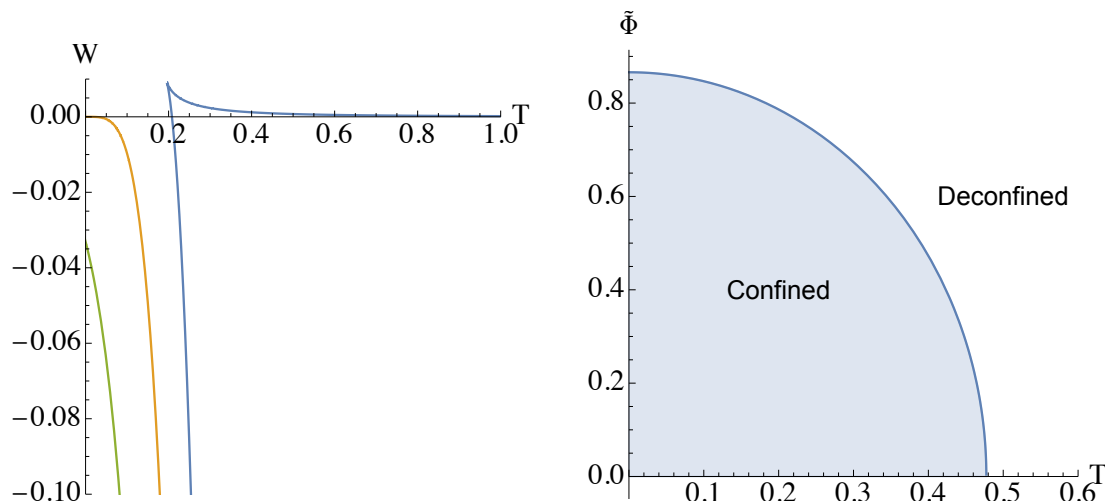


Figure 2. Free energy W vs. temperature T plot and phase diagram for the fixed $(\tilde{\Phi}, \mathcal{V}, C)$ ensemble in $d = 4$. *Left:* $W - T$ plot for the parameters $R = 1$, $C = 1$ and $\tilde{\Phi} = 0.9\Phi_c$ (blue), $\tilde{\Phi} = \Phi_c = \sqrt{3}/2$ (orange) and $\tilde{\Phi} = 1.1\Phi_c$ (green). For $\tilde{\Phi} < \Phi_c$ the free energy curve consists of two branches ending in a cusp, the upper branch corresponds to a low-entropy state and the lower branch to a high-entropy state. At $W = 0$ there is a first-order phase transition between the high-entropy “deconfined” state and a “confined” state, dual to a generalised Hawking-Page transition between a large black hole and thermal AdS, which depends on the value of $\tilde{\Phi}$ here. For $\Phi \geq \Phi_c$ the curve lies below or at the $W = 0$ axis and no phase transition takes place. *Right:* The $\tilde{\Phi} - T$ phase diagram for $R = C = 1$ with a coexistence curve representing a line of (de)confinement phase transitions in the CFT. At $\tilde{\Phi} = 0$ the transition occurs at the Hawking-Page temperature $T = T_c = 3/2\pi$, and at $T = 0$ it happens at $\tilde{\Phi} = \tilde{\Phi}_c$.

3.2 Ensemble at fixed $(\tilde{\Phi}, \mathcal{V}, C)$

If we fix the potential $\tilde{\Phi}$, instead of the charge \tilde{Q} , then we are in the grand canonical ensemble at fixed $(\tilde{\Phi}, \mathcal{V}, C)$. The thermodynamic potential of this ensemble is the Gibbs free energy

$$W \equiv E - TS - \tilde{\Phi}\tilde{Q} = \mu C = C \frac{x^{d-2}}{R} \left(1 - x^2 - \frac{y^2}{x^{2d-4}} \right), \quad (3.6)$$

where we inserted the Euler equation (2.13), which implies the free energy W is just proportional to μ , and in the last equality we used (2.27). This ensemble is equivalent to the fixed potential ensemble considered in [6, 7], but here we give a more precise interpretation in terms of the dual CFT (see also [32]).

Using $\tilde{\Phi} = y/\alpha R x^{d-2}$ we can rewrite the free energy in terms of the electric potential

$$W = C \frac{x^{d-2}}{R} \left(1 - x^2 - \alpha^2 R^2 \tilde{\Phi}^2 \right). \quad (3.7)$$

Similarly, the temperature can be expressed as

$$T = \frac{d-2}{4\pi R} \frac{1}{x} \left(1 + \frac{d}{d-2} x^2 - \alpha^2 R^2 \tilde{\Phi}^2 \right). \quad (3.8)$$

This allows us to plot the free energy $W(T)$ parametrically using x as parameter for fixed $(\tilde{\Phi}, R, C)$, as shown in figure 2 on the left. The $W - T$ plot displays different behaviour above and below a certain critical potential $\tilde{\Phi}_c$, which we compute below in (3.10). On the one hand, for $\tilde{\Phi} \geq \tilde{\Phi}_c$ (orange, green curves) the free energy is single valued as a function of the temperature, with $W \leq 0$ and the curve cuts the W -axis. On the other hand, for $\tilde{\Phi} < \tilde{\Phi}_c$ (blue curve) the free energy curve consists of an upper and a lower branch that meet at a cusp, corresponding to low-entropy (small black holes) and high-entropy (large black holes) states, respectively. The upper branch has negative specific heat and is hence thermodynamically unstable, while the lower branch has positive specific heat and is thus a stable solution. The temperature attains a minimum as a function of x at the cusp, i.e.

$$\left(\frac{\partial T}{\partial x}\right)_{\tilde{\Phi}} = 0 \quad \text{at} \quad x_{\text{cusp}} = \sqrt{\frac{d-2}{d}}(1 - \alpha^2 R^2 \tilde{\Phi}^2), \tag{3.9}$$

hence $T_{\text{cusp}} = \frac{1}{2\pi R} \sqrt{d(d-2)(1 - \alpha^2 R^2 \tilde{\Phi}^2)}.$

We see from the blue curve on the left of figure 2 that the free energy of the lower branch switches sign at $W = 0$, signalling a first-order phase transition. The large-entropy “deconfined” state dominates the ensemble when $W < 0$, while the “confined” state is thermodynamically preferred when $W > 0$. This (de)confinement phase transition is dual to a generalised Hawking-Page phase transition between large AdS black holes and the AdS spacetime with thermal radiation [4, 5]. Even though the Hawking-Page transition was originally discovered for AdS-Schwarzschild black holes [4], it also exists for charged AdS black holes, where the transition depends on the value of the electric potential [6]. This generalised Hawking-Page transition even exists for Lifshitz black holes for the values $1 \leq z \leq 2$ where z is the dynamical Lifshitz exponent [54] and for hyperscaling violating black holes for any hyperscaling violation parameter θ [55]. Thus, there exists an entire line in the $\tilde{\Phi} - T$ plane along which first-order phase transitions between the confined and deconfined phase occur.

This line of first-order phase transitions can be computed analytically. By setting $W = 0$ and eliminating x in favour of the temperature, we can obtain the following expression for the coexistence line

$$\tilde{\Phi} = \frac{\tilde{\Phi}_c}{T_c} \sqrt{T_c^2 - T^2}, \quad \text{with} \quad T_c = \frac{d-1}{2\pi R}, \quad \tilde{\Phi}_c = \frac{1}{\alpha R} = \frac{1}{R} \sqrt{\frac{d-1}{2d-4}}. \tag{3.10}$$

We plotted the coexistence line in the $\tilde{\Phi} - T$ plane in figure 2 on the right. Notice at $T = 0$ the phase transition occurs at $\tilde{\Phi} = \tilde{\Phi}_c$, and at $\tilde{\Phi} = 0$ the transition is equivalent to the standard Hawking-Page phase transition in the bulk at temperature $T = T_c$. The values for T_c and $\tilde{\Phi}_c$ in (3.10) are consistent with the expressions found in the bulk in [6]. Even though the phase behaviour is essentially the same as for the fixed potential ensemble in the bulk, our analysis makes sure that the volume \mathcal{V} and central charge C are also explicitly kept fixed in the corresponding fixed potential ensemble on the boundary.

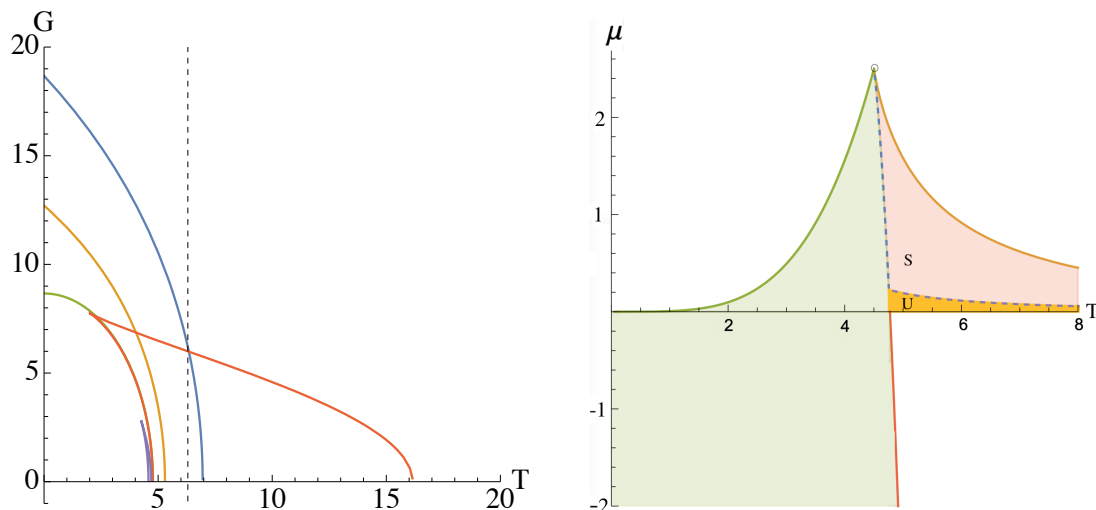


Figure 3. Free energy G vs. temperature T plot and phase diagram for the fixed $(\tilde{Q}, \mathcal{V}, \mu)$ ensemble in $d = 4$. In both figures we set $R = 0.1$, $\tilde{Q} = 1$. *Left:* The $G(T)$ plot for the values $\mu = -60, -10, 0, 1/10, 2$ (blue, orange, green, red, purple). For $\mu \leq 0$ there is only a single stable phase. For $\mu > 0$ (e.g. red curve) the free energy curve consists of two branches, which meet at a cusp $T = T_0$ (3.16) and cut the $G = 0$ line at two temperatures $T_1 \leq T_2$ (3.15). The upper branch corresponds to a low-entropy state and the lower branch to a high-entropy state. For $T_0 < T < T_1$ the high-entropy state is the thermodynamically preferred phase. At $T = T_1$, the high-entropy branch terminates and the CFT undergoes a zeroth-order phase transition to the low-entropy CFT phase when the temperature is increased. The low-entropy branch has positive heat capacity at $T = T_2$, but it becomes negative at some intermediate temperature T_{int} indicated by the black dashed line for the red curve. *Right:* The $\mu - T$ phase diagram showing demarcations between the different phases: the green shaded region bounded by the green curve is the high-entropy phase, which has positive heat capacity, the regions on the right above the T -axis correspond to the low-entropy phase. The latter is further divided into a stable (“S”) phase with positive heat capacity and an unstable (“U”) phase with negative heat capacity. White regions indicate that no solution exists.

3.3 Ensemble at fixed $(\tilde{Q}, \mathcal{V}, \mu)$

In the previous two ensembles we fixed the central charge C , which roughly corresponds to fixing the number of field degrees of freedom in the CFT or N^2 in a large- N $SU(N)$ gauge theory. Here we consider what happens if one fixes the associated chemical potential μ instead. The appropriate free energy for this grand canonical ensemble at fixed $(\tilde{Q}, \mathcal{V}, \mu)$ is

$$G \equiv E - TS - \mu C = \tilde{\Phi} \tilde{Q}, \tag{3.11}$$

where we inserted the Euler equation (2.13) in the last equality. The differential of G is

$$dG = dE - TdS - SdT - \mu dC - Cd\mu = -SdT + \tilde{\Phi}d\tilde{Q} - pd\mathcal{V} - Cd\mu, \tag{3.12}$$

so the free energy G is indeed stationary at fixed $(T, \tilde{Q}, \mathcal{V}, \mu)$. This ensemble has not been considered before in the black hole thermodynamics literature. We note that fixing the chemical potential instead of the number of degrees of freedom is very natural in thermodynamics. However, in the CFT this means that we are allowed to vary the central charge,

which is only possible if we consider a family of holographic CFTs with different central charges. In the gravity theory this corresponds to allowing for variations of Λ and G_N .

We can express the free energy and temperature as functions $G = G(\tilde{Q}, R, \mu, x)$ and $T = T(R, \mu, x)$ by replacing the potential $\tilde{\Phi}$ with the chemical potential μ using equations (2.27) and (2.25)

$$G = \frac{|\tilde{Q}|}{\alpha R} \sqrt{1 - x^2 - \frac{R\mu}{x^{d-2}}}, \quad (3.13)$$

$$T = \frac{d-2}{4\pi R} \left(\frac{R\mu}{x^{d-1}} + \frac{2(d-1)}{d-2} x \right). \quad (3.14)$$

In the formula for G the absolute value of \tilde{Q} appears, since strictly speaking the free energy cannot become negative. This can be easily seen by expressing the free energy in terms of the bulk electric potential and charge, i.e. $G = \frac{L}{R} \Phi Q = \frac{L}{R} \frac{(d-1)\Omega_{d-1}}{8\pi G_N} \frac{q^2}{r_h^{d-2}}$, hence the free energy is always greater than or equal to zero: $G \geq 0$.

With these expressions (3.13) and (3.14) we can plot $G(T)$ parametrically for fixed values of (\tilde{Q}, R, μ) ; see the left plot of figure 3. We note that the $G(T)$ diagram undergoes a qualitative change at $\mu = 0$ (the green curve), in which case the temperature is given by $T(\mu = 0) = \frac{d-1}{2\pi R} x$. For $\mu \leq 0$ (blue, orange and green curves) the free energy as a function of the temperature is single valued, corresponding to the existence of a single CFT phase that is stable under thermal fluctuations. For $0 < \mu < \mu_{\text{coin}}$ (red and purple curve) the free energy curve consists of two branches, cutting the $G = 0$ line at two temperatures T_1 and T_2 with $T_2 \geq T_1$, corresponding to the two positive roots of the function $f(x) = 1 - x^2 - \frac{R\mu}{x^{d-2}}$ appearing in expression (3.13). For $d = 4$ we can find the analytic expressions

$$T_1 = \frac{3 - 4\mu R + 3\sqrt{1 - 4\mu R}}{\sqrt{2\pi R} (1 + \sqrt{1 - 4\mu R})^{3/2}}, \quad T_2 = \frac{3 - 4\mu R - 3\sqrt{1 - 4\mu R}}{\sqrt{2\pi R} (1 - \sqrt{1 - 4\mu R})^{3/2}}. \quad (3.15)$$

Note for $\mu = 0$ we have $T_1 = \frac{3}{2\pi R}$ and $T_2 \rightarrow \infty$. Further, the two temperatures are the same at the coincidence point $\mu_{\text{coin}} = 1/4R$, so that $T_{\text{coin}} = \frac{\sqrt{2}}{\pi R}$.³ The free energy G is only real for $\mu \leq \mu_{\text{coin}}$, hence there are no $G(T)$ plots for $\mu > \mu_{\text{coin}}$.

Looking for example at the red curve in the left plot of figure 3, starting from the right intersection T_2 the value of the parameter x increases along the curve up to the cusp at T_0 , and increases further as we move down from the cusp to the left intersection T_1 . Therefore, the CFT phase lying between the cusp and T_2 corresponds to a low-entropy phase and the state lying between the cusp and T_1 corresponds to a high-entropy phase. The temperature of the cusp can be computed by obtaining the stationary point of $T(x)$, i.e.

$$\begin{aligned} \left(\frac{\partial T}{\partial x} \right)_\mu = 0 \quad \text{at} \quad x_0 &= \left(\frac{d-2}{2} \mu R \right)^{1/d}, \\ \text{hence} \quad T_0 &= \frac{d}{2\pi R} \left(\frac{d-2}{2} \mu R \right)^{1/d}. \end{aligned} \quad (3.16)$$

We note that $T_0(\mu_{\text{coin}}) = T_{\text{coin}}$, thus T_0 , T_1 and T_2 are all the same for $\mu = \mu_{\text{coin}}$.

³In general d this coincidence point occurs at $x_{\text{coin}} = \sqrt{\frac{d-2}{d}}$, $\mu_{\text{coin}} = \frac{2}{dR} \left(\frac{d-2}{d} \right)^{\frac{d-2}{2}}$ and $T_{\text{coin}} = \frac{\sqrt{d(d-2)}}{2\pi R}$.

Let us now describe the phase transitions in this ensemble. For $\mu \leq 0$ there is only a single phase, but for $0 < \mu < \mu_{\text{coin}}$ a phase transition can occur between the low- and high-entropy branches. For $T_0 < T < T_1$ the free energy is lowest for the high-entropy state, hence this phase is thermodynamically preferred in this regime. At $T = T_1$ the high-entropy phase terminates and there is a zeroth-order phase transition between the high-entropy and low-entropy state. For $T_1 < T < T_2$ the low-entropy state is the only existing phase, and hence it dominates the thermodynamic ensemble. An interesting feature of the low-entropy branch is that it has positive heat capacity between T_2 and some intermediate temperature

$$T_{\text{int}} = \frac{(d-2)\mu \left(\frac{2}{d\mu R}\right)^{\frac{d-1}{d-2}}}{4\pi} + \frac{(d-1) \left(\frac{2}{d\mu R}\right)^{-\frac{1}{d-2}}}{2\pi R}, \quad (3.17)$$

which is indicated by a dashed line on the left in figure 3, for which $x_{\text{int}} = \left(\frac{d}{2}\mu R\right)^{1/(d-2)}$. But the low-entropy phase has a negative heat capacity between T_{int} and T_0 and is hence unstable for low temperatures. The temperatures T_{int} and T_1 , at which the zeroth-order phase transition occurs, coincide for two values of the chemical potential, the first is μ_{coin} and the second is given by $\mu_* = \frac{1}{324R} (16\sqrt{7} - 35)$ in $d = 4$, and the associated temperature is $T_* = \frac{2}{3\pi R} \sqrt{2 + 8/\sqrt{7}}$. This means that for $\mu_* < \mu < \mu_{\text{coin}}$ the zeroth-order phase transition takes place between the *stable* low-entropy phase and the high-entropy phase, whereas for $0 < \mu < \mu_*$ the phase transition happens between the *unstable* low-entropy state and the stable high-entropy state.

We would like to point out that the zeroth-order phase transition could in principle happen both ways between the high- and low-entropy state, depending on whether the temperature is decreased or increased. On the one hand, the phase transition from the high- to the low-entropy state occurs when the temperature of the CFT increases above $T = T_1$, since above this temperature only the low-entropy branch survives, but this transition has the peculiar feature that the entropy decreases during the process, in contradiction to the second law of thermodynamics. On the other hand, the phase transition from the low- to the high-entropy state happens when the temperature decreases below $T = T_1$, and this transition seems thermodynamically more favourable since the entropy increases during the process.

We indicated the different phases in the $\mu - T$ plane on the right in figure 3. The green region is associated with the high-entropy phase, while the red and yellow regions correspond to the stable and unstable low-entropy phases, respectively. The zeroth-order phase transition occurs between the high-entropy phase (green region) and the low-entropy phase (red and yellow regions). There are no solutions in the white regions. For $\mu < 0$, the (red) boundary is fixed by the value of T_1 . For any given $\mu > 0$, the left and right boundaries of the phase space are set, respectively, by the temperature of the cusp T_0 and the temperature T_2 . These two boundaries meet at the coincidence point, where $\mu_{\text{coin}} = \frac{2}{dR} \left(\frac{d-2}{d}\right)^{\frac{d-2}{2}}$ and $T_{\text{coin}} = \frac{\sqrt{d(d-2)}}{2\pi R}$. Further, the coexistence line (the dashed line between the green and red/yellow regions) between the high- and low-entropy phase is determined by the temperature T_1 . And the coexistence line between the stable and unstable low-entropy phase (the dashed line between the red and yellow regions) is set by

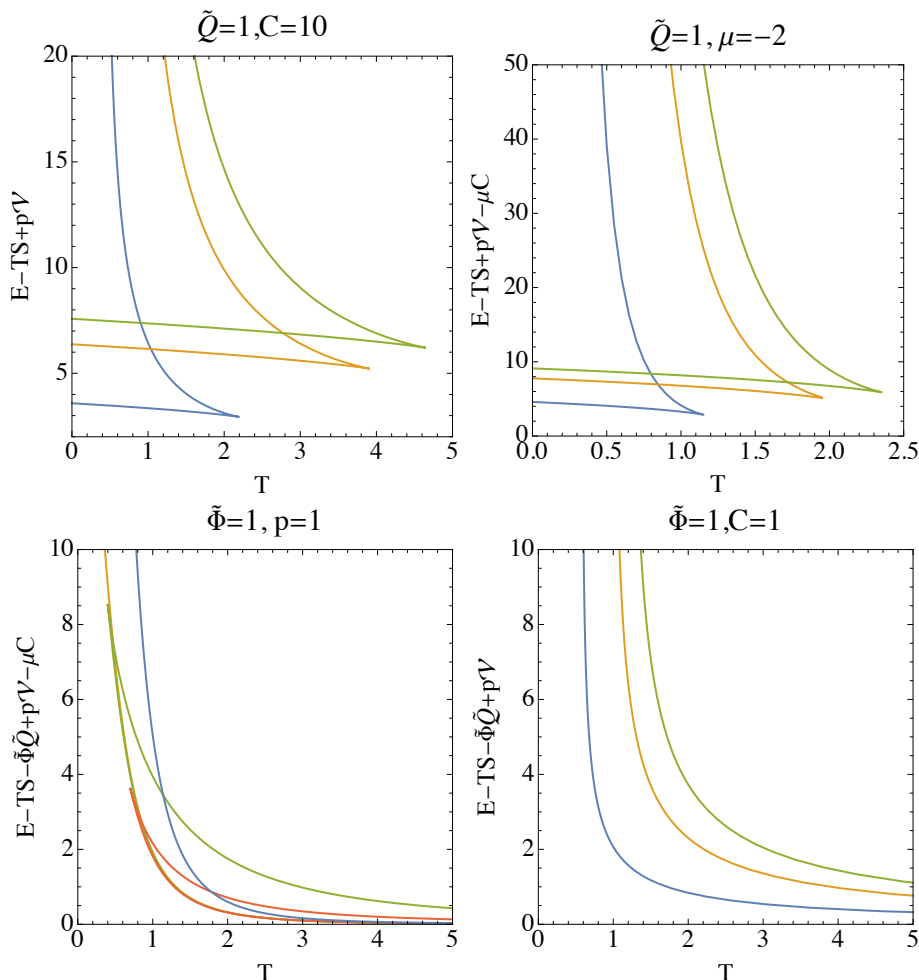


Figure 4. The free energies of other ensembles plotted against temperature in $d = 4$, corresponding to ensembles at fixed (\tilde{Q}, p, C) , (\tilde{Q}, p, μ) , $(\tilde{\Phi}, p, \mu)$ and $(\tilde{\Phi}, p, C)$ (from left to right). In the top left and right diagrams the free energies are plotted for $p = 1$ (blue), $p = 10$ (orange) and $p = 20$ (green). On the bottom left, the free energy of the fixed $(\tilde{\Phi}, p, \mu)$ ensemble has qualitatively different behaviour for $\mu \leq 0$ and $\mu > 0$. The former is single branched with an asymptote at $T = 0$, while the latter is double branched with a “tip” corresponding to a maximum $\tilde{\Phi}$ and minimum T ; the parameters used are $\mu = -10$ (blue), $\mu = 0$ (orange), $\mu = 1/20$ (green) and $\mu = 1/5$ (red). On the bottom right, the free energy plot for fixed $(\tilde{\Phi}, p, C)$ has a single branch with an asymptote at $T = 0$; the parameters used are $p = 1$ (blue), $p = 5$ (orange), $p = 10$ (green). These four ensembles do not display phase transitions.

the intermediate temperature T_{int} . The two coexistence lines (the intersection of the two dashed lines) meet at the point (μ_*, T_*) .

3.4 Other ensembles

In the previous subsections we discussed the (grand) canonical thermodynamic ensembles at fixed $(\tilde{Q}, \mathcal{V}, C)$, $(\tilde{\Phi}, \mathcal{V}, C)$ and $(\tilde{Q}, \mathcal{V}, \mu)$. In addition, there are five other grand canonical ensembles, for which the corresponding free energies $F_1 - F_5$ are given in equation (3.1).

In figure 4 the free energies are plotted against temperature for the first four ensembles for some representative parameter values. From left to right, these are the fixed (\tilde{Q}, p, C) , (\tilde{Q}, p, μ) , $(\tilde{\Phi}, p, \mu)$ and $(\tilde{\Phi}, p, C)$ ensembles. The ensemble not displayed in the figure is the fixed $(\tilde{\Phi}, \mathcal{V}, \mu)$ ensemble, for which the associated free energy F_5 is identically zero ($F_5 \equiv 0$) due to the Euler equation. We further note that in the infinite volume or infinite temperature limit $TR \rightarrow \infty$, two of the free energies simplify drastically

$$TR \rightarrow \infty : \quad F_1 = \tilde{\Phi}\tilde{Q}, \quad F_4 = 0, \quad (3.18)$$

since we have $\mu C = -p\mathcal{V}$ in this limit (see appendix C in [21]). Moreover, in this limit the free energy F_1 coincides with the free energy G (3.11) in the fixed $(\tilde{Q}, \mathcal{V}, \mu)$ ensemble, i.e. $F_1 = \tilde{\Phi}\tilde{Q} = G$. And, in this limit the free energy F_2 is equal to minus the free energy W (3.6) in the fixed $(\tilde{\Phi}, \mathcal{V}, C)$ ensemble, i.e. $F_2 = -\mu C = -W$.

Importantly, from figure 4 we see that all five ensembles do not display critical phenomena or phase transitions. Therefore, there is no critical behaviour, such as $p - \mathcal{V}$ criticality, in the fixed p ensembles in the CFT. Further, in the first three ensembles at fixed (\tilde{Q}, p, C) , (\tilde{Q}, p, μ) and $(\tilde{\Phi}, p, \mu)$, there are two branches in the free energy plots: the lower branch corresponds to a thermal state with a high value of S/C , dual to a large black hole in the bulk, and the upper branch is associated with a thermal state with a low value of S/C , corresponding to a small AdS black hole. The lower branch in these plots has the lowest free energy for a fixed temperature, and hence this phase dominates the respective ensembles; moreover, it has positive specific heat and is therefore stable against thermal fluctuations. The upper branch has negative specific heat, and is therefore thermodynamically unstable.

4 CFT criticality and thermodynamic stability

In this section we study the critical behaviour of the (extended) CFT thermodynamics corresponding to charged AdS black holes. We show that the critical points in the $\tilde{Q} - \tilde{\Phi}$ and $C - \mu$ planes have mean field critical exponents. Further, we derive the heat capacities for the ensembles at fixed $(\tilde{Q}, \mathcal{V}, C)$, $(\tilde{\Phi}, \mathcal{V}, C)$ and $(\tilde{Q}, \mathcal{V}, \mu)$, and analyse the thermodynamic stability of the different phases in these ensembles.

4.1 Critical points and comparison with Van der Waals fluid

As is widely known, the critical behaviour of charged AdS black holes resembles that of common thermodynamic fluids. From what we have just seen, this resemblance is maintained in the dual CFT. In the fixed $(\tilde{Q}, \mathcal{V}, C)$ ensemble the first-order phase transition between low- and high-entropy states observed above is similar to the first-order liquid-gas phase transition of Van der Waals fluids. If one plots the three-dimensional $\tilde{G} - T - P$ diagram for the Van der Waals fluid (see for example figure 3 in [9]), where $\tilde{G} \equiv E - TS + PV$ is the Gibbs free energy, one obtains a swallowtail diagram similar to what we would obtain if plot the $F - T - \tilde{Q}$ or $F - T - C^{-1}$ diagram. Therefore, we can view respectively \tilde{Q} and $1/C$ as playing a role analogous to the pressure of the Van der Waals fluid in driving the system to its critical point. Moreover, the electric potential $\tilde{\Phi}$ and the chemical potential μ are analogous to the volume of the Van der Waals system. In fact, critical exponents of

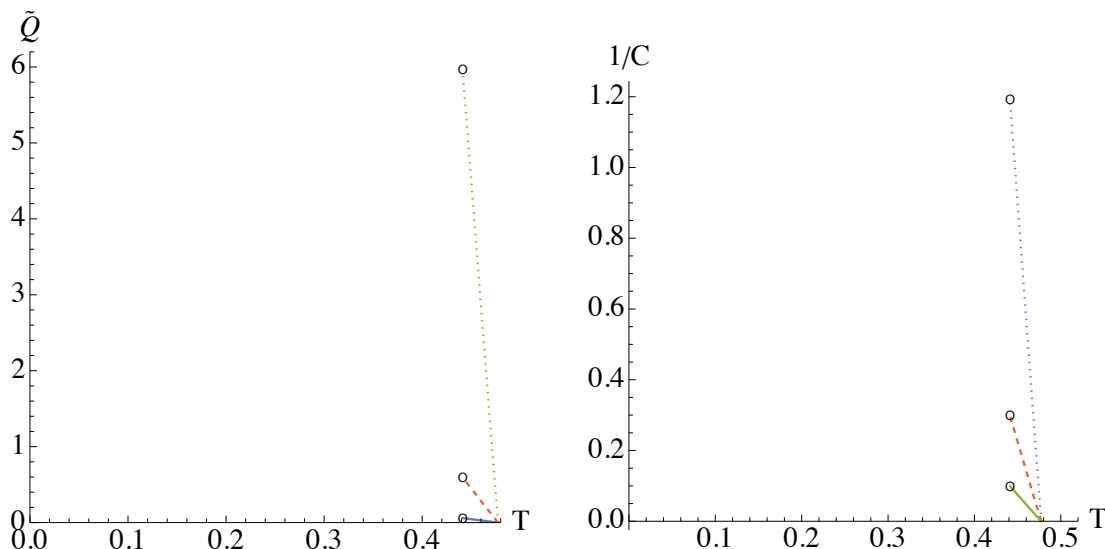


Figure 5. Coexistence lines in $d = 4$ for the fixed $(\tilde{Q}, \mathcal{V}, C)$ ensemble. *Left:* Low-entropy and high-entropy coexistence curve for CFT thermal states on $\tilde{Q} - T$ phase diagram. The parameters used here are $R = 1$, $C = 1/10$ (blue), $C = 1$ (red, dashed) and $C = 10$ (green, dotted). For each value of C , the coexistence line represents a line of first-order phase transitions between low-entropy states (to the left of the line) and high-entropy states (to the right), and the line ends at a critical point where a second-order phase transition occurs at $\tilde{Q} = \tilde{Q}_{\text{crit}}$ and $T = T_{\text{crit}}$. *Right:* A similar coexistence curve of the low- and high-entropy CFT states exists in the $1/C - T$ phase diagram, which we depicted here for $R = 1$ and $\tilde{Q} = 1/2$ (green), $\tilde{Q} = 2$ (orange, dashed) and $\tilde{Q} = 6$ (blue, dotted).

the CFT critical point are the same as the critical exponents of the Van der Waals fluid, and hence they fall within the same universality class. We will perform this computation in both the $\tilde{Q} - \tilde{\Phi}$ and $C - \mu$ plane in the next subsection.

Let us first compute the values of the relevant thermodynamic quantities at the critical point. The temperature has an inflection point as a function of x at the critical point [6], i.e.

$$\left(\frac{\partial T}{\partial x}\right)_y = 0 = \left(\frac{\partial^2 T}{\partial x^2}\right)_y \quad \text{at } x = x_{\text{crit}} \quad \text{and} \quad y = y_{\text{crit}}. \quad (4.1)$$

From (2.26) we find that these relations are solved by

$$x_{\text{crit}} = \frac{(d-2)}{\sqrt{d(d-1)}}, \quad y_{\text{crit}} = \frac{1}{\sqrt{(d-1)(2d-3)}} x_{\text{crit}}^{d-2}. \quad (4.2)$$

This yields a critical value for the ratio of the central charge and the electric charge

$$\frac{C_{\text{crit}}}{\tilde{Q}_{\text{crit}}} = \frac{1}{2\alpha(d-1)y_{\text{crit}}} = \sqrt{\frac{(2d-3)}{8(d-2)}} \frac{1}{x_{\text{crit}}^{d-2}}. \quad (4.3)$$

For $d = 3$ we have $C_{\text{crit}}/\tilde{Q}_{\text{crit}} = 3/2$ and for $d = 4$ we have $C_{\text{crit}}/\tilde{Q}_{\text{crit}} = 3\sqrt{5}/4$. When the electric charge vanishes $\tilde{Q} = 0$ there is no critical point and hence no critical value of the central charge.

Van der Waals fluid	analogy 1	analogy 2
temperature	β	β
pressure	\tilde{Q}	$1/C$
volume	$\tilde{\Phi}$	μ

Table 1. Two analogies between the thermodynamic variables of the Van der Waals fluid and those of the CFT thermal state dual to charged AdS black holes.

The entropy (2.25) and temperature (2.26) at the critical point are

$$S_{\text{crit}} = 4\pi\tilde{Q}_{\text{crit}}\sqrt{\frac{(d-2)(2d-3)}{8d(d-1)}}, \quad T_{\text{crit}} = \frac{(d-2)^2}{(2d-3)\pi R x_{\text{crit}}} = \frac{d-2}{2d-3} \frac{\sqrt{d(d-1)}}{\pi R}. \quad (4.4)$$

For completeness, we also write down the critical values of the chemical potential (2.27), the electric potential (2.8) and the pressure (2.23)

$$\mu_{\text{crit}} = \frac{6(d-2)}{d(2d-3)} \frac{x_{\text{crit}}^{d-2}}{R}, \quad \tilde{\Phi}_{\text{crit}} = \frac{1}{R\sqrt{2(d-2)(2d-3)}}, \quad (4.5)$$

$$p_{\text{crit}} = \frac{C_{\text{crit}} x_{\text{crit}}^{d-2}}{\Omega_{d-1} R^d} \frac{4(d(d-3)+3)}{d(2d-3)} = \frac{\tilde{Q}_{\text{crit}}}{\Omega_{d-1} R^d} \frac{2(d(d-3)+3)}{d\sqrt{2(d-2)(2d-3)}}. \quad (4.6)$$

Figure 5 shows the coexistence lines of the low- and high-entropy phases of the CFT on the $\tilde{Q} - T$ as well as the $1/C - T$ phase diagrams. The coexistence line separates the two phases on these planes and the CFT undergoes a first-order phase transition as it crosses the line. On both of these phase diagrams, the low-entropy phase lies to the left of the coexistence line (for any given value of C and R respectively) while the high-entropy phase lies to the right. The critical points are depicted by open circles on the diagram. Above the critical points, the CFT does not display distinct phases.

One point to note about figure 5 is that while \tilde{Q} and $1/C$ in the CFT can be roughly viewed as playing the analogous role of the pressure of a Van der Waals fluid, we see a slight qualitative difference in the respective coexistence lines. Those in the CFT are negatively sloped, whereas those in the $P - T$ plane of a Van der Waals fluid (and the $1/C - T$ of bulk charged AdS black holes in [22]) are positively sloped. This mismatch in the analogy can be resolved by replacing the temperature by the inverse temperature [6, 7, 9]. That is, the coexistence lines in the $\tilde{Q} - \beta$ and $1/C - \beta$ phase diagrams have a positive slope, and are therefore more analogous to the those in the $P - T$ phase diagram of a Van der Waals fluid (see for instance figure 13 in [9] for the coexistence curve in the $Q - \beta$ plane). In table 1 we summarize the two formal analogies between the CFT thermal states and the Van der Waals fluid. This shows the analogies are purely mathematical and do not identify the same physical quantities. Therefore, we conclude CFT states dual to charged AdS black holes are not identical to Van der Waals fluids, they just fall within the same universality class.

Finally, since the critical point given by (4.2) does not depend on \mathcal{V} , and no critical points were found in the fixed p ensembles, there is no critical behaviour in the $p - \mathcal{V}$ plane in the CFT. This stands in stark contrast to the $P - V$ criticality found in [9] for charged black

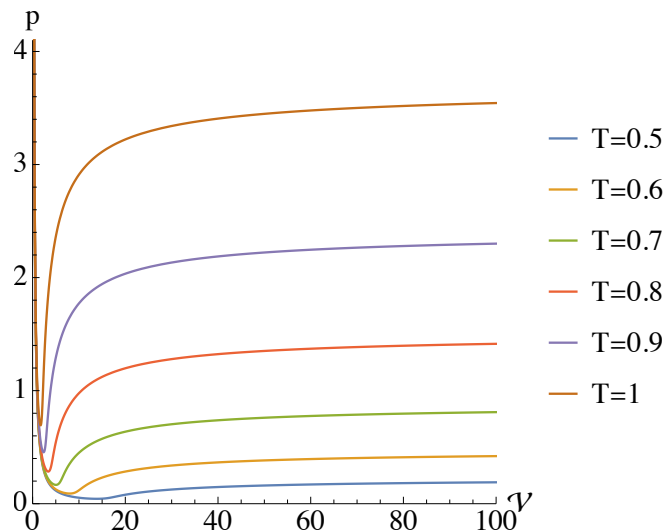


Figure 6. No $p - \mathcal{V}$ criticality for holographic CFTs. The $p - \mathcal{V}$ phase diagram for the CFT is very different from that of the Van der Waals fluid. At fixed C and \tilde{Q} , the diagram shows the same qualitative behaviour for all T . In particular, there is no critical temperature at which the curve displays an inflection point. The parameters used here are $\tilde{Q} = C = 1$ and $d = 4$, but the same qualitative behaviour applies in other dimensions $d > 2$.

holes using the standard interpretation of extended black hole thermodynamics, where P is the bulk pressure (1.4) and V the associated thermodynamic volume. For illustration, we display the CFT $p(\mathcal{V})$ diagram in figure 6 for different values of the temperature at fixed (\tilde{Q}, C) . We see that the behaviour is different from that of the Van der Waals fluid (see for instance figure 1 in [9]). For any temperature the pressure p first decreases to a global minimum before increasing with the volume \mathcal{V} for the given (\tilde{Q}, C) . In particular, there is no critical temperature at which the $p(\mathcal{V})$ plot displays an inflection point. In other words, the CFT fluid dual to a charged black holes is *not* a standard Van der Waals fluid.

4.2 Critical exponents for fixed $(\tilde{Q}, \mathcal{V}, C)$ ensemble

In the previous subsection we have seen that there is no criticality in the $p - \mathcal{V}$ plane; the critical point only appears in the $C - \mu$ and $\tilde{Q} - \tilde{\Phi}$ plane. Here, we aim to derive the critical exponents of the critical points in these respective planes.

4.2.1 Criticality in $C - \mu$ plane

First we study the criticality in the $C - \mu$ plane. We can express the central charge and chemical potential as the functions $C = C(\tilde{Q}, T, R, x)$ and $\mu = \mu(T, R, x)$, respectively,

$$C = \frac{\tilde{Q}}{2\alpha(d-1)x^{d-2}\sqrt{1 + \frac{d}{d-2}x^2 - Tx\frac{4\pi R}{d-2}}}, \tag{4.7}$$

$$\mu = \frac{x^{d-1}}{R} \left(T\frac{4\pi R}{d-2} - \frac{2(d-1)}{d-2}x \right). \tag{4.8}$$

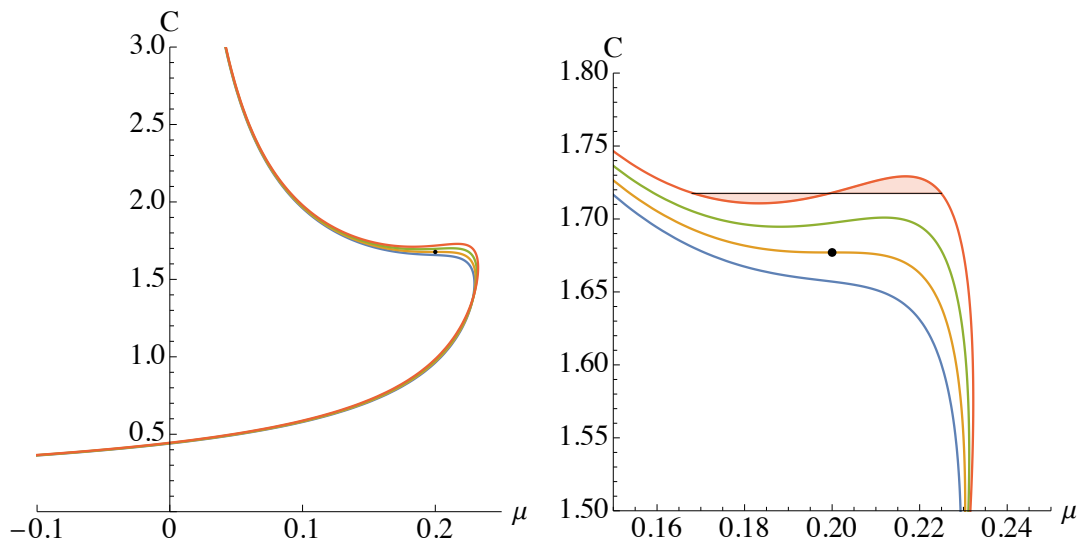


Figure 7. Isotherms in the $C - \mu$ plane for $d = 4$. The parameters used here are $\tilde{Q} = 1$, $R = 1$ and $T = T_{\text{crit}} = \frac{4\sqrt{3}}{5\pi}$ (orange), $T = 0.999T_{\text{crit}}$ (blue), $T = 1.001T_{\text{crit}}$ (green) and $T = 1.002T_{\text{crit}}$ (red). The right plot shows a zoomed-in version of the left plot around the critical point (black dot). For $T > T_{\text{crit}}$ (e.g. red curve), the curve displays a “wriggle” similar to the familiar $P - V$ phase diagram in the Van der Waals liquid-gas phase transition. The phase transition takes place in accordance with Maxwell’s equal area law.

The “equation of state” is described by $C = C(\mu, T)$ for fixed (\tilde{Q}, V) , since C (or actually $1/C$) is analogous to pressure and μ to volume in the second analogy with the Van der Waals fluid in table 1. In figure 7 we plot $C(\mu)$ parametrically using x as parameter for different values of T . For each temperature, there exists a maximum value μ_{max} for the chemical potential. This happens at $x = \frac{4\pi}{2d}TR$ where we have $\mu_{\text{max}} = \frac{2}{(d-2)R}x^d$. The local features of the critical point are more easily visible in the right diagram of figure 7. The critical point is indicated here by the black dot, which is the inflection point of the $C(\mu, T_{\text{crit}})$ curve. Above the critical temperature the $C(\mu)$ curve displays a “wriggle”, i.e. a local minimum is followed by a local maximum. To describe the first-order phase transition between high- and low-entropy CFT phases in the fixed $(\tilde{Q}, \mathcal{V}, C)$ ensemble one has to replace the wriggle by a horizontal $C = \text{constant}$ line, in accordance with Maxwell’s equal area law [9]. This means that the areas above and below the $C = \text{constant}$ line (marked in red in figure 7) are equal. The first-order phase transition takes place across this $C = \text{constant}$ line.

To study the critical exponents in the $C - \mu$ plane, let us define the variables

$$t \equiv \frac{T - T_{\text{crit}}}{T_{\text{crit}}}, \quad \chi \equiv \frac{C}{C_{\text{crit}}}, \quad \psi \equiv \frac{\mu - \mu_{\text{crit}}}{\mu_{\text{crit}}}. \quad (4.9)$$

Note that we are not precisely following the second analogy with the Van der Waals fluid in table 1, since we are using T and C as our variables instead of β and $1/C$ respectively, but this is not necessary to derive the mean field critical exponents. The critical exponents that bear our interest are defined as follows:

- The critical exponent α governs the behaviour of the specific heat at constant $(\tilde{Q}, \mathcal{V}, \mu)$,

$$C_{\tilde{Q}, \mathcal{V}, \mu} \equiv T \left(\frac{\partial S}{\partial T} \right)_{\tilde{Q}, \mathcal{V}, \mu} \sim |t|^{-\alpha}. \quad (4.10)$$

- The exponent β describes the behaviour of the order parameter $\eta \equiv \mu_h - \mu_l$ where μ_h (μ_l) is the value of μ of the high-entropy (low) CFT state at the first-order transition,

$$\eta \equiv \mu_h - \mu_l \sim |t|^\beta. \quad (4.11)$$

- The exponent γ determines the behaviour of κ_T ,

$$\kappa_T \equiv -\frac{1}{\mu} \left(\frac{\partial \mu}{\partial C} \right)_{T, \tilde{Q}, \mathcal{V}} \sim |t|^{-\gamma}, \quad (4.12)$$

where we fix the temperature but do not hold μ fixed.

- The exponent δ governs the following behaviour on the critical isotherm $T = T_{\text{crit}}$

$$|C - C_{\text{crit}}| \sim |\mu - \mu_{\text{crit}}|^\delta. \quad (4.13)$$

First, to find α we can use the following expressions for the entropy $S(\tilde{Q}, R, \mu, x)$ and the temperature $T(\tilde{Q}, R, \mu, x)$,

$$S = \frac{2\pi\tilde{Q}x^{\frac{d}{2}+1}}{\sqrt{(d-2)(d-1)}\sqrt{-2(x^2-1)x^d - 2\mu Rx^2}}, \quad (4.14)$$

$$T = \frac{x}{4\pi R} \left((d-2)\mu Rx^{-d} + 2(d-1) \right), \quad (4.15)$$

obtained by substituting C and y in terms of μ , \tilde{Q} and x , using (2.25) and (2.27). This gives,

$$C_{\tilde{Q}, \mathcal{V}, \mu} = \frac{\pi\tilde{Q}x^{\frac{d}{2}+1} \left(2x^d - d\mu Rx^2 \right) \left((d-2)\mu R + 2(d-1)x^d \right)}{\sqrt{2(d-2)(d-1)^{3/2} \left(2x^d - (d-2)\mu R \right) \left(-x^{d+2} + x^d - \mu Rx^2 \right)^{3/2}}} \quad (4.16)$$

$$\xrightarrow[\mu \rightarrow \mu_{\text{crit}}]{x \rightarrow x_{\text{crit}}} 2\pi(d-3)(d-2)(d-1) \sqrt{\frac{4d-6}{d(d^2-3d+2)}} \tilde{Q} \implies \alpha = 0.$$

In other words, the heat capacity at constant $(\tilde{Q}, \mathcal{V}, \mu)$ has a finite limit at the critical point and hence $\alpha = 0$.

For the other critical exponents (see e.g. [9]), we write (4.7) in terms of $\chi = \chi(t, \psi)$, and expand around the critical point, $t = \psi = 0$. This gives us

$$\chi = 1 + 2(d-2)(d-1)t + \frac{6(d-2)(d-1)(2d-3)}{d} t\psi - \frac{54(d-2)(d-1)(2d-3)}{d^3} \psi^3 + O(t\psi^2, \psi^4). \quad (4.17)$$

Differentiating this at fixed t gives

$$dC = C_{\text{crit}} \left(\frac{6(d-2)(d-1)(2d-3)}{d} t - \frac{162(d-2)(d-1)(2d-3)}{d^3} \psi^2 \right) d\psi. \quad (4.18)$$

Let us now denote $\psi_h = (\mu_h - \mu_{\text{crit}})/\mu_{\text{crit}}$ and $\psi_l = (\mu_l - \mu_{\text{crit}})/\mu_{\text{crit}}$. Using Maxwell's equal area law and the fact that during the phase transition χ remains constant, we have the following two equations:

$$\begin{aligned} \chi &= 1 + 2(d-2)(d-1)t + \frac{6(d-2)(d-1)(2d-3)}{d} t \psi_h - \frac{54(d-2)(d-1)(2d-3)}{d^3} \psi_h^3 \\ &= 1 + 2(d-2)(d-1)t + \frac{6(d-2)(d-1)(2d-3)}{d} t \psi_l - \frac{54(d-2)(d-1)(2d-3)}{d^3} \psi_l^3, \\ 0 &= \int_{\psi_l}^{\psi_h} \psi \left(\frac{6(d-2)(d-1)(2d-3)}{d} t - \frac{162(d-2)(d-1)(2d-3)}{d^3} \psi^2 \right) d\psi, \end{aligned} \quad (4.19)$$

which admit the unique non-trivial solution, $\psi_h = -\psi_l = \frac{d\sqrt{t}}{3}$. Hence we have

$$\eta = \mu_{\text{crit}}(\psi_h - \psi_l) = \mu_{\text{crit}} \frac{2d\sqrt{t}}{3} \implies \beta = 1/2. \quad (4.20)$$

To calculate γ , we differentiate (4.17), which gives

$$\left(\frac{\partial \mu}{\partial C} \right)_{T, \tilde{Q}, \mathcal{V}} = \frac{\mu_{\text{crit}}}{y_{\text{crit}}} \frac{d}{6(d-2)(d-1)(2d-3)} \frac{1}{t} + O(\psi). \quad (4.21)$$

Hence,

$$\kappa_T \sim \frac{d}{6(d-2)(d-1)(2d-3)y_{\text{crit}}} \frac{1}{t} \implies \gamma = 1. \quad (4.22)$$

Finally, we can determine δ by setting $t = 0$ in (4.17), which gives us

$$\chi = 1 + \frac{54(d-2)(d-1)(2d-3)}{d^3} \psi^3 \implies \delta = 3. \quad (4.23)$$

The critical exponents obtained here agree with those found previously in [9] as well as the predictions of mean field theory (MFT).

4.2.2 Criticality in $\tilde{Q} - \tilde{\Phi}$ plane

We can also study the criticality in the $\tilde{Q} - \tilde{\Phi}$ plane (see also [32, 56] for a similar analysis). In this case, we consider the ‘‘equation of state’’ $\tilde{Q} = \tilde{Q}(\tilde{\Phi}, T)$ for fixed (\mathcal{V}, C) , following the first analogy with the Van der Waals fluid in table 1. As before, we do this parametrically, using x as the parameter. This gives,

$$\tilde{Q} = 2\sqrt{2}Cx^{d-2} \sqrt{(d-1)(dx^2 + d - 2 - 4\pi RTx)}, \quad (4.24)$$

$$\tilde{\Phi} = \frac{\sqrt{(d-1)(dx^2 + d - 2 - 4\pi RTx)}}{\sqrt{2}(d-2)R}. \quad (4.25)$$

The $\tilde{Q} - \tilde{\Phi}$ plot around the critical point is shown in figure 8. Similar to the $C - \mu$ case, the curve displays a ‘‘wriggle’’ near the critical point for temperatures $T < T_{\text{crit}}$, where an equal area law holds.

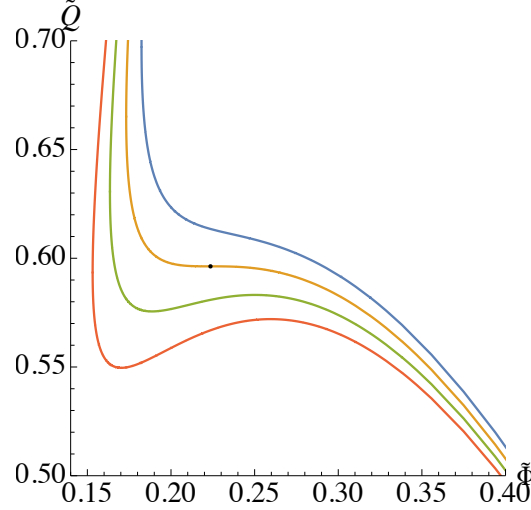


Figure 8. Isotherms in the $\tilde{Q} - \tilde{\Phi}$ plane around the critical point (black dot) for $d = 4$. The parameters used here are $C = R = 1$ and $T = 0.999 T_{\text{crit}}$ (blue), $T = T_{\text{crit}} = \frac{4\sqrt{3}}{5\pi}$ (orange), $T = 1.001 T_{\text{crit}}$ (green) and $T = 1.002 T_{\text{crit}}$ (red). For the temperatures $T < T_{\text{crit}}$, the $\tilde{Q}(\tilde{\Phi})$ curve displays a “wriggle” for which Maxwell’s equal area law holds.

To study the critical exponents we denote

$$t \equiv \frac{T - T_{\text{crit}}}{T_{\text{crit}}}, \quad \tilde{q} \equiv \frac{\tilde{Q}}{\tilde{Q}_{\text{crit}}}, \quad \phi \equiv \frac{\tilde{\Phi} - \tilde{\Phi}_{\text{crit}}}{\tilde{\Phi}_{\text{crit}}}. \quad (4.26)$$

The four critical exponents α , β , γ and δ in this case are defined as

$$\mathcal{C}_{\tilde{\Phi}, \nu, C} \equiv T \left(\frac{\partial S}{\partial T} \right)_{\tilde{\Phi}, \nu, C} \sim |t|^{-\alpha}, \quad \eta \equiv \tilde{\Phi}_h - \tilde{\Phi}_l \sim |t|^\beta, \quad (4.27)$$

$$\kappa_T \equiv -\frac{1}{\tilde{\Phi}} \left(\frac{\partial \tilde{\Phi}}{\partial \tilde{Q}} \right)_{T, \nu, C} \sim |t|^{-\gamma}, \quad |\tilde{Q} - \tilde{Q}_{\text{crit}}| \sim |\tilde{\Phi} - \tilde{\Phi}_{\text{crit}}|^\delta. \quad (4.28)$$

Compared to the Van der Waals fluid, here $\mathcal{C}_{\tilde{\Phi}, \nu, C}$ is the analog of the heat capacity at constant volume, η is the order parameter on an isotherm describing the difference $\tilde{\Phi}_h - \tilde{\Phi}_l$ between the “volume” of high- and low-entropy phases, κ_T is the equivalent of isothermal compressibility, and the exponent δ is a property of the critical isotherm $t = 0$.

The first critical exponent α can be derived by evaluating the heat capacity at the critical point, which yields a finite value

$$\begin{aligned} \mathcal{C}_{\tilde{\Phi}, \nu, C} &= \frac{4\pi C(d-1)x^{d-1} \left((d-1)(dx^2 + d-2) - 2(d-2)^2 R^2 \tilde{\Phi}^2 \right)}{d^2(x^2 - 1) + 2(d-2)^2 R^2 \tilde{\Phi}^2 - dx^2 + 3d - 2} \\ &\xrightarrow{x \rightarrow x_{\text{crit}}} \frac{4\pi C(d-1)x_{\text{crit}}^{d-1} \left(2(d-2)\tilde{\Phi}^2 R^2 - 2d + 3 \right)}{1 - 2(d-2)\tilde{\Phi}^2 R^2} \implies \alpha = 0. \end{aligned} \quad (4.29)$$

Further, in order to compute β , γ and δ , we need to expand $\tilde{q}(t, \phi)$ near the critical point

$$\tilde{q} = 1 - 2(d-2)(d-1)t + 2(d-1)(2d-3)t\phi - \frac{2(d-1)(2d-3)}{(d-2)^2}\phi^3. \quad (4.30)$$

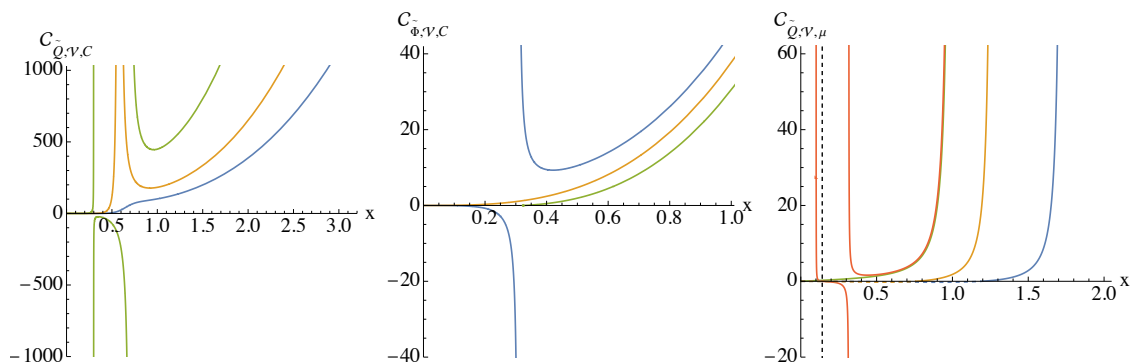


Figure 9. Heat capacities, from left to right, for fixed $(\tilde{Q}, \mathcal{V}, C)$, $(\tilde{\Phi}, \mathcal{V}, C)$ and $(\tilde{Q}, \mathcal{V}, \mu)$ ensembles in $d = 4$. For ease of comparison, the parameters used here are the same as in figures 1, 2 and 3, respectively.

Following the same steps as above in the $C - \mu$ plane, we can deduce from this expansion that once again the critical exponents agree with those of MFT: $\alpha = 0, \beta = 1/2, \gamma = 1, \delta = 3$.

4.3 Heat capacities and thermal stability

We turn next to the thermodynamic stability of the phases in the three main ensembles considered in section 3. The heat capacities in the different ensembles are defined as

$$c_{\tilde{Q},\mathcal{V},C} \equiv T \left(\frac{\partial S}{\partial T} \right)_{\tilde{Q},\mathcal{V},C} = \left(\frac{\partial E}{\partial T} \right)_{\tilde{Q},\mathcal{V},C}, \quad (4.31)$$

$$c_{\tilde{\Phi},\mathcal{V},C} \equiv T \left(\frac{\partial S}{\partial T} \right)_{\tilde{\Phi},\mathcal{V},C} = \left(\frac{\partial(E - \tilde{\Phi}\tilde{Q})}{\partial T} \right)_{\tilde{\Phi},\mathcal{V},C}, \quad (4.32)$$

$$c_{\tilde{Q},\mathcal{V},\mu} \equiv T \left(\frac{\partial S}{\partial T} \right)_{\tilde{Q},\mathcal{V},\mu} = \left(\frac{\partial(E - \mu C)}{\partial T} \right)_{\tilde{Q},\mathcal{V},\mu}. \quad (4.33)$$

We can compute the heat capacities explicitly by first finding the expressions for temperature and entropy as functions of $(\tilde{Q}, \mathcal{V}, C, x)$, $(\tilde{\Phi}, \mathcal{V}, C, x)$ and $(\tilde{Q}, \mathcal{V}, \mu, x)$, respectively, and then differentiating using the chain rule. This leads to the following expressions

$$c_{\tilde{Q},\mathcal{V},C} = \frac{4\pi C(d-1) \left(8C^2(d-1)x^{2d} (dx^2 + d-2) - \tilde{Q}^2 x^4 \right)}{8C^2(d-1) (d(x^2-1) + 2)x^{d+1} + (2d-3)\tilde{Q}^2 x^{-(d-5)}}, \quad (4.34)$$

$$c_{\tilde{\Phi},\mathcal{V},C} = \frac{4\pi C(d-1)x^{d-1} \left((d-1)(dx^2 + d-2) - 2(d-2)^2 R^2 \tilde{\Phi}^2 \right)}{d^2(x^2-1) + 2(d-2)^2 R^2 \tilde{\Phi}^2 - dx^2 + 3d-2}, \quad (4.35)$$

$$c_{\tilde{Q},\mathcal{V},\mu} = \frac{\pi \tilde{Q} x^{\frac{d}{2}+1} \left(2x^d - d\mu R x^2 \right) \left((d-2)\mu R + 2(d-1)x^d \right)}{\sqrt{2(d-2)}(d-1)^{3/2} (2x^d - (d-2)\mu R) (-x^{d+2} + x^d - \mu R x^2)^{3/2}}, \quad (4.36)$$

where we note that R is related to \mathcal{V} through equation (2.16).

These heat capacities are plotted in figure 9 for $d = 4$. The left plot corresponds to the fixed $(\tilde{Q}, \mathcal{V}, C)$ ensemble, for which the heat capacity behaves as follows. For $C >$

C_{crit} (green), the curve separates into three distinct segments, namely the low-entropy, intermediate and high-entropy states of the CFT. These three segments correspond to the three branches in the swallowtail $F(T)$ plot in figure 1. The low- and high-entropy CFT states have positive heat capacities and are stable, while the intermediate entropy state has negative heat capacity and is unstable. At $C = C_{\text{crit}}$ (orange), the heat capacity is always positive, and becomes infinite at the critical point $x_{\text{crit}} = \frac{d-2}{\sqrt{d(d-1)}}$. For $C < C_{\text{crit}}$ (blue) the CFT does not display distinct thermodynamic phases and the heat capacity is always positive.

The middle plot of figure 9 corresponds to the fixed $(\tilde{\Phi}, \mathcal{V}, C)$ ensemble. When $\tilde{\Phi} < \tilde{\Phi}_c$ (blue), the curve splits into two segments: at small x , corresponding to the low-entropy branch of the blue curve in figure 2, the CFT has negative heat capacity and is unstable; for big $x > x_{\text{cusp}} = \sqrt{\frac{d^2 - 2(d-2)^2 R^2 \tilde{\Phi}^2 - 3d + 2}{(d-1)d}}$, corresponding to the high-entropy branch of the blue curve in figure 2, the heat capacity is positive and the CFT is in a stable state. The heat capacity diverges at $x = x_{\text{cusp}}$, which is identical to the value of the cusp in equation (3.9). For $\tilde{\Phi} \geq \tilde{\Phi}_c$ (orange, green) the heat capacity is always positive.

The last plot of figure 9 shows the heat capacity for the fixed $(\tilde{Q}, \mathcal{V}, \mu)$ ensemble. In this ensemble, the heat capacity is always positive for $\mu \leq 0$. Note that for $\mu < 0$ (blue, orange), the physical parameter range is $x \geq \left(\frac{d-2}{2(d-1)}|\mu|R\right)^{1/d}$, corresponding to the solid part of the $\mu < 0$ curves. The dashed horizontal curve has negative temperature and is unphysical. For $\mu > 0$ (red), the plot consists of two disconnected segments corresponding to the low-entropy phase (small x) and high-entropy phase (large x). While the CFT in the high-entropy phase is always stable with positive heat capacity, the heat capacity of the low-entropy phase cuts the x -axis at $x_{\text{int}} = \left(\frac{d}{2}\mu R\right)^{1/(d-2)}$ (black dashed line) and becomes negative beyond this point. On the $G - T$ plot of figure 3, low-entropy states on the red curve lying to the right of the black dashed line have $\mathcal{C}_{\tilde{Q}, \mathcal{V}, \mu} > 0$ while those lying between T_0 and the dashed line have $\mathcal{C}_{\tilde{Q}, \mathcal{V}, \mu} < 0$. Note we computed the temperature T_{int} at which the heat capacity of the low-entropy phase switches sign in equation (3.17). The separation between the positive and negative heat capacity low-entropy states is, furthermore, shown on the coexistence diagram of figure 3 by the horizontal dashed line between the red and yellow regions. Finally, $\mathcal{C}_{\tilde{Q}, \mathcal{V}, \mu}$ diverges at the temperatures T_0 , T_1 and T_2 , corresponding respectively to the left boundary, the vertical dashed line and the right boundary in the $\mu - T$ diagram of figure 3.

5 Discussion

We have studied the thermodynamics of CFTs in thermal states that are dual to charged AdS black holes via the AdS/CFT correspondence. The following pairs of conjugate thermodynamic variables — $\{(T, S), (\tilde{\Phi}, \tilde{Q}), (p, \mathcal{V}), (\mu, C)\}$ — are associated with these thermal states, and each has a dual expression in terms of thermodynamic variables of the bulk AdS black hole through the holographic dictionary. We note in particular that the pair (μ, C) has been left out in most thermodynamic studies of holographic CFTs up to now. To our knowledge, ours is the first exhaustive study of all possible canonical ensembles of

the CFT under this new addition. We have not performed independent computations in the CFT to confirm our results, which is an interesting direction for future work.

Only in the ensemble with fixed $(\tilde{Q}, \mathcal{V}, C)$ did we find critical behaviour. Criticality has been found before [32] in the $\tilde{Q}-\tilde{\Phi}$ plane for $d = 4$ holographic CFTs; the critical exponents were also shown to agree with mean field theory when the right order parameter, namely $\tilde{\Phi}$, was chosen. Here we have considered in addition criticality in the $C - \mu$ plane. Moreover, we discovered a new zeroth-order phase transition in the fixed $(\tilde{Q}, \mathcal{V}, \mu)$ ensemble between a low-entropy (small S/C) and a high-entropy (large S/C) phase. We refer to [11] for a different example of a zeroth-order phase transition in extended black hole thermodynamics, and to [57] for such a transition in superfluidity and superconductivity. The physical viability of a zeroth-order transition remains an open question.

The fixed μ ensemble, for which we found a zeroth-order phase transition, certainly deserves further study. We would like to remind the reader that the chemical potential is equal to the grand canonical free energy $W = E - TS - \tilde{\Phi}\tilde{Q}$ divided by the central charge C , i.e. $\mu = W/C$. Hence, fixing μ amounts to fixing the thermal free energy per degree of freedom, which we note is a property of the thermal state under consideration. The ensemble then compares different states with different thermal free energy per degree of freedom. Further, the central charge of the CFT is allowed to vary continuously in this ensemble, which for gauge theories only makes sense in the large- N limit. It would be interesting to better understand how the rank N of the gauge group can be allowed to vary while keeping μ fixed in, for instance, $\mathcal{N} = 4$ supersymmetric Yang-Mills theory. However, in the large- N limit the N dependence of the thermodynamic quantities like energy, entropy and charge is trivial: they just scale with a power of N , for instance N^2 for $SU(N)$ theories. Thus, changing N just rescales the thermodynamic quantities, and therefore in the large- N limit it seems straightforward to study how various physical quantities change as the central charge varies. Of course, this becomes less trivial when $1/N$ corrections are taken into account.

The earliest studies of the phase behaviour of charged AdS black holes [6, 7] were performed well before variations of Λ and G_N had been introduced, and so these quantities were implicitly kept constant in the analysis. It is clear that fixing Λ and G_N corresponds to fixing the central charge C in the dual CFT; in addition the boundary volume \mathcal{V} was kept fixed in the holographic interpretation. The canonical (fixed charge) and grand canonical (fixed potential) ensembles studied previously in the bulk [6, 7] are therefore respectively identical to the $(\tilde{Q}, \mathcal{V}, C)$ and $(\tilde{\Phi}, \mathcal{V}, C)$ ensembles in the dual CFT that we have considered. In particular, the Van der Waals-like phase transition with mean field critical exponents in the bulk canonical ensemble is the same as the first-order phase transition in the $(\tilde{Q}, \mathcal{V}, C)$ ensemble studied here, and the generalised Hawking-Page transition in the grand canonical ensemble in the bulk is dual to the (de)confinement phase transition in the $(\tilde{\Phi}, \mathcal{V}, C)$ ensemble. In particular, the free energy plots in figures 4 and 3 in [7] in the canonical and grand canonical ensembles are respectively similar to our figures 1 and 2 for the $(\tilde{Q}, \mathcal{V}, C)$ and $(\tilde{\Phi}, \mathcal{V}, C)$ ensembles. Moreover, the schematic coexistence diagrams in figure 12 of [7] qualitatively agree with our exact phase diagrams in figures 2 and 5.

Since the thermodynamics of AdS black holes has been extended to allow for variations

of Λ (and later on for variations of G_N), a natural follow-up question concerns the dual CFT interpretation of this extended thermodynamics.⁴ The original investigations [16, 18, 28, 29] already recognized that the cosmological constant is dual to the number of colors or the central charge of the dual CFT. However, in previous holographic proposals for extended black hole thermodynamics where the central charge and its associated chemical potential were introduced, the CFT volume \mathcal{V} and the central charge C were often not clearly distinguished in the bulk, except in [19, 21]. For instance in [29–31], the chemical potential was defined as $\mu \equiv \left(\frac{\partial E}{\partial C}\right)_{S, \tilde{Q}}$ without fixing the CFT volume \mathcal{V} . This is problematic since they worked with a particular choice of CFT metric for which both \mathcal{V} and C are proportional to L^{d-1} in the bulk, so one has to be careful with taking partial derivatives with respect to C while holding \mathcal{V} fixed. One way to resolve this is to allow for variations of Newton’s constant such that the variation of $\mathcal{V} \sim L^{d-1}$ is clearly distinct from the variation of $C \sim L^{d-1}/G_N$ [19]. Another way to more clearly distinguish \mathcal{V} and C is to introduce the boundary curvature radius R , which can be unequal to the bulk curvature radius L , such that the volume is $\mathcal{V} \sim R^{d-1}$ and the central charge is still $C \sim L^{d-1}/G_N$ [21]. Note that in this case G_N does not need to be varied. To cover the most general case in the present paper, following [21], we allowed for variations of Newton’s constant and considered a constant boundary curvature radius $R \neq L$.

Recently a “mixed” bulk/boundary perspective on extended black hole thermodynamics was considered by some of us [22], where the variation of both the bulk pressure and of the central charge appear in the extended first law of AdS black holes (see footnote 1). The fixed (Q_b, P, C) ensemble for charged AdS black holes considered in that paper corresponds to the fixed $(\tilde{Q}, \mathcal{V}, C)$ ensemble in the present paper. Similar critical behaviour was discovered for $d = 3$ in the $C - \mu$ plane in that paper. One important difference, however, is that the coexistence line in the $1/C - T$ phase diagram in [22] has positive slope and agrees with the coexistence line in the $P - T$ phase diagram of the Van der Waals liquid-gas system, whereas the coexistence curve in the $1/C - T$ phase diagram in figure 5 has negative slope and does not start from the origin. Moreover, another difference is that at the critical point the central charge is proportional to the square of the electric charge $C_{\text{crit}} \sim Q_b^2$ in $d = 3$, cf. equation (28) in [22], which is seemingly at odds with our result (4.3), $C_{\text{crit}} \sim \tilde{Q}$. This is not a disagreement, because the Q_b appearing in that formula is the *bulk* electric charge, and the holographic dictionary employed in [22], $\tilde{Q} = Q_b L / \sqrt{G_N}$, alters the relationship between the electric charge and central charge. Indeed, if we make use of this latter dictionary definition, and note that $C \sim L^2/G_N$ for $d = 3$, then upon insertion into $C_{\text{crit}} \sim Q_b^2$ we would obtain $C_{\text{crit}} \sim \tilde{Q}$ in agreement with our result.⁵

In other recent work [62] a restricted version of the CFT thermodynamics in [21] was proposed, where the volume \mathcal{V} was kept fixed. The reason for this seems to be that the authors contend the boundary volume is related to the cosmological constant in the bulk,

⁴For other field theory interpretations of extended black hole thermodynamics, see e.g. [28, 32, 58–61].

⁵In general dimensions the critical central charge found in [22] is given by $C_{\text{crit}} \sim G_N^{-\frac{d-3}{2d-4}} Q_b^{\frac{d-1}{d-2}}$. Inserting the dictionary $\tilde{Q} = Q_b L / \sqrt{G_N}$ and $C \sim L^{d-1}/G_N$ still yields $C_{\text{crit}} \sim \tilde{Q}$, in agreement with our equation (4.3).

via $\mathcal{V} \sim L^{d-1}$, which in turn is kept fixed in order to avoid changing the gravitational theory. However in section 2 (and in [21]), we explained that the holographic dictionary for the volume can be altered into $\mathcal{V} \sim R^{d-1}$ by Weyl rescaling the CFT metric, where R is not related to the cosmological constant. Furthermore, the claim in [62] that the absence of a $p\mathcal{V}$ term in the holographic Euler equation is a problem for the homogeneity behaviour of the internal energy is not correct. The Euler equation is derived from the scaling relation $E(\alpha S, V, \alpha \tilde{Q}, \alpha C) = \alpha E(S, V, \tilde{Q}, C)$, which holds in the deconfined phase of a large- N theory on a compact space. This means the internal energy is not extensive in this setting, since it does not satisfy $E(\alpha S, \alpha V, \alpha \tilde{Q}, C) = \alpha E(S, V, \tilde{Q}, C)$. Only in the limit $TR \rightarrow \infty$ does the energy become an extensive function.

Finally, we comment on the different findings in the literature regarding criticality for charged AdS black holes. In standard black hole chemistry, where Newton’s constant is kept fixed, criticality is present in the $Q - \Phi$ plane, the $\beta - r_h$ plane and the $P - V$ plane for charged AdS black holes [6, 7, 9]. The pleasant feature of $P - V$ criticality is that the analogy with the Van der Waals fluid is complete, since it compares the “right” physical quantities in the black hole system and the liquid-gas system. However, as explained in the introduction, when Newton’s constant is allowed to vary, the extended first law cannot be expressed solely in terms of the variation of the bulk pressure. Therefore, in [22] the extended black hole first law was written in a “mixed” way in terms of the bulk pressure and central charge variations. In this “mixed” bulk/boundary formalism there is no criticality in the $P - V$ plane, but a new kind of criticality was discovered in the $C - \mu$ plane. Furthermore, in the present paper we studied a CFT interpretation of extended black hole thermodynamics and found criticality in the $\tilde{Q} - \tilde{\Phi}$ plane and in the $C - \mu$ plane (where our chemical potential is notably different from the one in [22]). Thus, on the one hand we see that $P - V$ criticality is only present in the bulk when Newton’s constant is kept fixed. On the other hand, $P - V$ criticality disappears when Newton’s constant is allowed to vary, and it is traded for $C - \mu$ criticality. Similarly, our findings in the CFT suggest there is no $p - \mathcal{V}$ criticality, but there is a critical point in the $C - \mu$ plane that falls within the same universality class as the Van der Waals fluid.

Acknowledgments

MV is funded by the Swiss National Science Foundation, through Project Grants 200020-182513 and 51NF40-141869 The Mathematics of Physics (SwissMAP). This work was supported by the Perimeter Institute for Theoretical Physics and by NSERC. Research at Perimeter Institute is supported in part by the Government of Canada through the Department of Innovation, Science and Economic Development Canada and by the Province of Ontario through the Ministry of Colleges and Universities. Perimeter Institute and the University of Waterloo are situated on the Haldimand Tract, land that was promised to the Haudenosaunee of the Six Nations of the Grand River, and is within the territory of the Neutral, Anishnawbe, and Haudenosaunee peoples.

Open Access. This article is distributed under the terms of the Creative Commons Attribution License ([CC-BY 4.0](https://creativecommons.org/licenses/by/4.0/)), which permits any use, distribution and reproduction in any medium, provided the original author(s) and source are credited. SCOAP³ supports the goals of the International Year of Basic Sciences for Sustainable Development.

References

- [1] S.W. Hawking, *Particle creation by black holes*, *Commun. math. Phys.* **43** (1975) 199.
- [2] J.D. Bekenstein, *Black holes and entropy*, *Phys. Rev. D* **7** (1973) 2333 [[INSPIRE](#)].
- [3] J.M. Maldacena, *The large N limit of superconformal field theories and supergravity*, *Int. J. Theor. Phys.* **38** (1999) 1113 [*Adv. Theor. Math. Phys.* **2** (1998) 231] [[hep-th/9711200](#)] [[INSPIRE](#)].
- [4] S.W. Hawking and D.N. Page, *Thermodynamics of black holes in Anti-de Sitter space*, *Commun. Math. Phys.* **87** (1983) 577 [[INSPIRE](#)].
- [5] E. Witten, *Anti-de Sitter space, thermal phase transition, and confinement in gauge theories*, *Adv. Theor. Math. Phys.* **2** (1998) 505 [[hep-th/9803131](#)] [[INSPIRE](#)].
- [6] A. Chamblin, R. Emparan, C.V. Johnson and R.C. Myers, *Charged AdS black holes and catastrophic holography*, *Phys. Rev. D* **60** (1999) 064018 [[hep-th/9902170](#)] [[INSPIRE](#)].
- [7] A. Chamblin, R. Emparan, C.V. Johnson and R.C. Myers, *Holography, thermodynamics and fluctuations of charged AdS black holes*, *Phys. Rev. D* **60** (1999) 104026 [[hep-th/9904197](#)] [[INSPIRE](#)].
- [8] M. Cvetič and S.S. Gubser, *Phases of R charged black holes, spinning branes and strongly coupled gauge theories*, *JHEP* **04** (1999) 024 [[hep-th/9902195](#)] [[INSPIRE](#)].
- [9] D. Kubiznak and R.B. Mann, *P - V criticality of charged AdS black holes*, *JHEP* **07** (2012) 033 [[arXiv:1205.0559](#)] [[INSPIRE](#)].
- [10] B.P. Dolan, A. Kostouki, D. Kubiznak and R.B. Mann, *Isolated critical point from Lovelock gravity*, *Class. Quant. Grav.* **31** (2014) 242001 [[arXiv:1407.4783](#)] [[INSPIRE](#)].
- [11] N. Altamirano, D. Kubiznak and R.B. Mann, *Reentrant phase transitions in rotating Anti-de Sitter black holes*, *Phys. Rev. D* **88** (2013) 101502 [[arXiv:1306.5756](#)] [[INSPIRE](#)].
- [12] A.M. Frassino, D. Kubiznak, R.B. Mann and F. Simovic, *Multiple reentrant phase transitions and triple points in Lovelock thermodynamics*, *JHEP* **09** (2014) 080 [[arXiv:1406.7015](#)] [[INSPIRE](#)].
- [13] N. Altamirano, D. Kubizňák, R.B. Mann and Z. Sherkatghanad, *Kerr-AdS analogue of triple point and solid/liquid/gas phase transition*, *Class. Quant. Grav.* **31** (2014) 042001 [[arXiv:1308.2672](#)] [[INSPIRE](#)].
- [14] S.-W. Wei and Y.-X. Liu, *Triple points and phase diagrams in the extended phase space of charged Gauss-Bonnet black holes in AdS space*, *Phys. Rev. D* **90** (2014) 044057 [[arXiv:1402.2837](#)] [[INSPIRE](#)].
- [15] R.A. Hennigar, R.B. Mann and E. Tjoa, *Superfluid black holes*, *Phys. Rev. Lett.* **118** (2017) 021301 [[arXiv:1609.02564](#)] [[INSPIRE](#)].
- [16] D. Kastor, S. Ray and J. Traschen, *Enthalpy and the mechanics of AdS black holes*, *Class. Quant. Grav.* **26** (2009) 195011 [[arXiv:0904.2765](#)] [[INSPIRE](#)].

- [17] D. Kastor, S. Ray and J. Traschen, *Smarr formula and an extended first law for Lovelock gravity*, *Class. Quant. Grav.* **27** (2010) 235014 [[arXiv:1005.5053](#)] [[INSPIRE](#)].
- [18] D. Kastor, S. Ray and J. Traschen, *Chemical potential in the first law for holographic entanglement entropy*, *JHEP* **11** (2014) 120 [[arXiv:1409.3521](#)] [[INSPIRE](#)].
- [19] A. Karch and B. Robinson, *Holographic black hole chemistry*, *JHEP* **12** (2015) 073 [[arXiv:1510.02472](#)] [[INSPIRE](#)].
- [20] D. Sarkar and M. Visser, *The first law of differential entropy and holographic complexity*, *JHEP* **11** (2020) 004 [[arXiv:2008.12673](#)] [[INSPIRE](#)].
- [21] M.R. Visser, *Holographic thermodynamics requires a chemical potential for color*, *Phys. Rev. D* **105** (2022) 106014 [[arXiv:2101.04145](#)] [[INSPIRE](#)].
- [22] W. Cong, D. Kubiznak and R.B. Mann, *Thermodynamics of AdS Black Holes: Critical Behavior of the Central Charge*, *Phys. Rev. Lett.* **127** (2021) 091301 [[arXiv:2105.02223](#)] [[INSPIRE](#)].
- [23] T. Jacobson and M. Visser, *Gravitational thermodynamics of causal diamonds in (A)dS*, *SciPost Phys.* **7** (2019) 079 [[arXiv:1812.01596](#)] [[INSPIRE](#)].
- [24] B.P. Dolan, *Pressure and volume in the first law of black hole thermodynamics*, *Class. Quant. Grav.* **28** (2011) 235017 [[arXiv:1106.6260](#)] [[INSPIRE](#)].
- [25] B.P. Dolan, *The cosmological constant and the black hole equation of state*, *Class. Quant. Grav.* **28** (2011) 125020 [[arXiv:1008.5023](#)] [[INSPIRE](#)].
- [26] M. Cvetič, G.W. Gibbons, D. Kubiznak and C.N. Pope, *Black hole enthalpy and an entropy inequality for the thermodynamic volume*, *Phys. Rev. D* **84** (2011) 024037 [[arXiv:1012.2888](#)] [[INSPIRE](#)].
- [27] D. Kubiznak and R.B. Mann, *Black hole chemistry*, *Can. J. Phys.* **93** (2015) 999 [[arXiv:1404.2126](#)] [[INSPIRE](#)].
- [28] C.V. Johnson, *Holographic heat engines*, *Class. Quant. Grav.* **31** (2014) 205002 [[arXiv:1404.5982](#)] [[INSPIRE](#)].
- [29] B.P. Dolan, *Bose condensation and branes*, *JHEP* **10** (2014) 179 [[arXiv:1406.7267](#)] [[INSPIRE](#)].
- [30] J.-L. Zhang, R.-G. Cai and H. Yu, *Phase transition and thermodynamical geometry for Schwarzschild AdS black hole in $AdS_5 \times S^5$ spacetime*, *JHEP* **02** (2015) 143 [[arXiv:1409.5305](#)] [[INSPIRE](#)].
- [31] J.-L. Zhang, R.-G. Cai and H. Yu, *Phase transition and thermodynamical geometry of Reissner-Nordström-AdS black holes in extended phase space*, *Phys. Rev. D* **91** (2015) 044028 [[arXiv:1502.01428](#)] [[INSPIRE](#)].
- [32] B.P. Dolan, *Pressure and compressibility of conformal field theories from the AdS/CFT correspondence*, *Entropy* **18** (2016) 169 [[arXiv:1603.06279](#)] [[INSPIRE](#)].
- [33] J.F. Pedraza, A. Svesko, W. Sybesma and M.R. Visser, *Semi-classical thermodynamics of quantum extremal surfaces in Jackiw-Teitelboim gravity*, *JHEP* **12** (2021) 134 [[arXiv:2107.10358](#)] [[INSPIRE](#)].
- [34] J.P. Gauntlett, R.C. Myers and P.K. Townsend, *Black holes of $D = 5$ supergravity*, *Class. Quant. Grav.* **16** (1999) 1 [[hep-th/9810204](#)] [[INSPIRE](#)].

- [35] M.M. Caldarelli, G. Cognola and D. Klemm, *Thermodynamics of Kerr-Newman-AdS black holes and conformal field theories*, *Class. Quant. Grav.* **17** (2000) 399 [[hep-th/9908022](#)] [[INSPIRE](#)].
- [36] D. Kubiznak, R.B. Mann and M. Teo, *Black hole chemistry: thermodynamics with Lambda*, *Class. Quant. Grav.* **34** (2017) 063001 [[arXiv:1608.06147](#)] [[INSPIRE](#)].
- [37] E. Caceres, P.H. Nguyen and J.F. Pedraza, *Holographic entanglement chemistry*, *Phys. Rev. D* **95** (2017) 106015 [[arXiv:1605.00595](#)] [[INSPIRE](#)].
- [38] F. Rosso and A. Svesko, *Novel aspects of the extended first law of entanglement*, *JHEP* **08** (2020) 008 [[arXiv:2003.10462](#)] [[INSPIRE](#)].
- [39] M. Sinamuli and R.B. Mann, *Higher order corrections to holographic black hole chemistry*, *Phys. Rev. D* **96** (2017) 086008 [[arXiv:1706.04259](#)] [[INSPIRE](#)].
- [40] J.D. Brown and M. Henneaux, *Central charges in the canonical realization of asymptotic symmetries: an example from three-dimensional gravity*, *Commun. Math. Phys.* **104** (1986) 207 [[INSPIRE](#)].
- [41] R.C. Myers and A. Sinha, *Seeing a c-theorem with holography*, *Phys. Rev. D* **82** (2010) 046006 [[arXiv:1006.1263](#)] [[INSPIRE](#)].
- [42] R.C. Myers and A. Sinha, *Holographic c-theorems in arbitrary dimensions*, *JHEP* **01** (2011) 125 [[arXiv:1011.5819](#)] [[INSPIRE](#)].
- [43] H. Osborn and A.C. Petkou, *Implications of conformal invariance in field theories for general dimensions*, *Annals Phys.* **231** (1994) 311 [[hep-th/9307010](#)] [[INSPIRE](#)].
- [44] L.-Y. Hung, R.C. Myers, M. Smolkin and A. Yale, *Holographic calculations of Renyi entropy*, *JHEP* **12** (2011) 047 [[arXiv:1110.1084](#)] [[INSPIRE](#)].
- [45] S.S. Gubser, I.R. Klebanov and A.M. Polyakov, *Gauge theory correlators from noncritical string theory*, *Phys. Lett. B* **428** (1998) 105 [[hep-th/9802109](#)] [[INSPIRE](#)].
- [46] E. Witten, *Anti-de Sitter space and holography*, *Adv. Theor. Math. Phys.* **2** (1998) 253 [[hep-th/9802150](#)] [[INSPIRE](#)].
- [47] I. Savonije and E.P. Verlinde, *CFT and entropy on the brane*, *Phys. Lett. B* **507** (2001) 305 [[hep-th/0102042](#)] [[INSPIRE](#)].
- [48] M. Henningson and K. Skenderis, *The holographic Weyl anomaly*, *JHEP* **07** (1998) 023 [[hep-th/9806087](#)] [[INSPIRE](#)].
- [49] V. Balasubramanian and P. Kraus, *A Stress tensor for Anti-de Sitter gravity*, *Commun. Math. Phys.* **208** (1999) 413 [[hep-th/9902121](#)] [[INSPIRE](#)].
- [50] M. Henneaux and C. Teitelboim, *Asymptotically Anti-de Sitter spaces*, *Commun. Math. Phys.* **98** (1985) 391 [[INSPIRE](#)].
- [51] A. Ashtekar and A. Magnon, *Asymptotically Anti-de Sitter space-times*, *Class. Quant. Grav.* **1** (1984) L39 [[INSPIRE](#)].
- [52] A. Ashtekar and S. Das, *Asymptotically Anti-de Sitter space-times: conserved quantities*, *Class. Quant. Grav.* **17** (2000) L17 [[hep-th/9911230](#)] [[INSPIRE](#)].
- [53] S. Hollands, A. Ishibashi and D. Marolf, *Comparison between various notions of conserved charges in asymptotically AdS-spacetimes*, *Class. Quant. Grav.* **22** (2005) 2881 [[hep-th/0503045](#)] [[INSPIRE](#)].

- [54] J. Tarrío and S. Vandoren, *Black holes and black branes in Lifshitz spacetimes*, *JHEP* **09** (2011) 017 [[arXiv:1105.6335](#)] [[INSPIRE](#)].
- [55] J.F. Pedraza, W. Sybesma and M.R. Visser, *Hyperscaling violating black holes with spherical and hyperbolic horizons*, *Class. Quant. Grav.* **36** (2019) 054002 [[arXiv:1807.09770](#)] [[INSPIRE](#)].
- [56] C. Niu, Y. Tian and X.-N. Wu, *Critical phenomena and thermodynamic geometry of RN-AdS black holes*, *Phys. Rev. D* **85** (2012) 024017 [[arXiv:1104.3066](#)] [[INSPIRE](#)].
- [57] V. P. Maslov, *Zeroth-order phase transitions*, *Math. Notes* **76** (2004) 697.
- [58] E. Caceres, P.H. Nguyen and J.F. Pedraza, *Holographic entanglement entropy and the extended phase structure of STU black holes*, *JHEP* **09** (2015) 184 [[arXiv:1507.06069](#)] [[INSPIRE](#)].
- [59] J. Couch, W. Fischler and P.H. Nguyen, *Noether charge, black hole volume, and complexity*, *JHEP* **03** (2017) 119 [[arXiv:1610.02038](#)] [[INSPIRE](#)].
- [60] C.V. Johnson, V.L. Martin and A. Svesko, *Microscopic description of thermodynamic volume in extended black hole thermodynamics*, *Phys. Rev. D* **101** (2020) 086006 [[arXiv:1911.05286](#)] [[INSPIRE](#)].
- [61] M. Rafiee, S.A.H. Mansoori, S.-W. Wei and R.B. Mann, *Universal criticality of thermodynamic geometry for boundary conformal field theories in gauge/gravity duality*, *Phys. Rev. D* **105** (2022) 024058 [[arXiv:2107.08883](#)] [[INSPIRE](#)].
- [62] G. Zeyuan and L. Zhao, *Restricted phase space thermodynamics for AdS black holes via holography*, *Class. Quant. Grav.* **39** (2022) 075019 [[arXiv:2112.02386](#)] [[INSPIRE](#)].